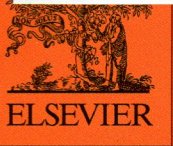


RU
1-69/321

Volume 67
www.elsevier.com

April 2014

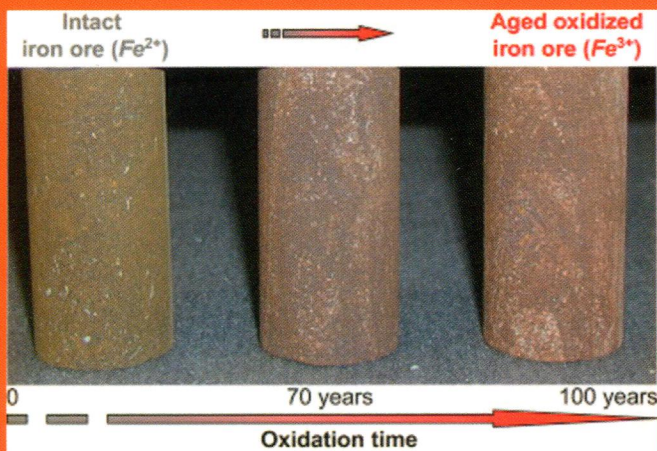
ISSN 1365-1609



New developments and case studies in rock mechanics
and rock engineering

International Journal of Rock Mechanics and Mining Sciences

Editor-in-Chief: **R. W. Zimmerman**, *Imperial College, London, UK*



- fundamental rock behaviour
- *in situ* stress
- site investigation
- rock cutting and drilling
- underground excavations
- rock reinforcement and support
- dam engineering
- geothermal energy
- petroleum engineering
- radioactive waste disposal

CONTENTS

Articles

- | | | |
|--|-----|--|
| T. Yokoyama, O. Sano, A. Hirata, K. Ogawa, Y. Nakayama, T. Ishida and Y. Mizuta | 9 | Development of borehole-jack fracturing technique for in situ stress measurement |
| H. Haeri, K. Shahriar, M.F. Marji and P. Moarefvand | 20 | Experimental and numerical study of crack propagation and coalescence in pre-cracked rock-like disks |
| M. He, W. Gong, J. Wang, P. Qi, Z. Tao, S. Du and Y. Peng | 29 | Development of a novel energy-absorbing bolt with extraordinarily large elongation and constant resistance |
| E. Mohtarami, A. Jafari and M. Amini | 43 | Stability analysis of slopes against combined circular-toppling failure |
| W.-j. Xu, Y.-x. Jie, Q.-b. Li, X.-b. Wang and Y.-z. Yu | 57 | Genesis, mechanism, and stability of the Dongmiaojia landslide, yellow river, China |
| F. Bozzano, I. Cipriani, P. Mazzanti and A. Prestininzi | 69 | A field experiment for calibrating landslide time-of-failure prediction functions |
| M. Zajc, Ž. Pogačnik and A. Gosar | 78 | Ground penetrating radar and structural geological mapping investigation of karst and tectonic features in flyschoid rocks as geological hazard for exploitation |
| Z. Zhu, C. Wang, J. Kang, Y. Li and M. Wang | 88 | Study on the mechanism of zonal disintegration around an excavation |
| M. Yang, Y. Zhao and N. Zhang | 96 | Creep behavior of epoxy-bonded anchor system |
| P. Gerard, J. Harrington, R. Charlier and F. Collin | 104 | Modelling of localised gas preferential pathways in claystone |
| P. Morissette, J. Hadjigeorgiou and D. Thibodeau | 115 | Investigating the dynamic-load demand on support systems using passive monitoring data |
| M. Yurdakul, K. Gopalakrishnan and H. Akdas | 127 | Prediction of specific cutting energy in natural stone cutting processes using the neuro-fuzzy methodology |
| D. Mas and A.I. Chemenda | 136 | Dilatancy factor constrained from the experimental data for rocks and rock-type material |
| A. Sainoki and H.S. Mitri | 155 | Dynamic modelling of fault-slip with Barton's shear strength model |
| R.L. Castro, M.A. Fuenzalida and F. Lund | 164 | Experimental study of gravity flow under confined conditions |

*continued on inside back cover*IJRMMS now has a dedicated WWW page: <http://www.elsevier.com/locate/ijrmms>

Int. J. Rock Mech. Min. Sci. is Indexed/Abstracted in: Appl. Mech. Rev., Cam. Sci. Abstr., Curr. Cont./Eng. Tech. & Appl. Sci., Eng. Ind., Curr. Cont. Sci. Cit. Ind., Curr. Cont. SCISEARCH Data, Geo. Abstr., Geo. Bib. & Ind., INSPEC Data., Int. Civil Eng. Abstr., Mater. Sci. Cit. Ind., PASCAL-CNRS Data., Res. Alert. Also covered in the abstract and citation database SCOPUS[®]. Full text available in ScienceDirect[®].



1365-1609(201404)67:C;1-B

ISSN 1365-1609

continued from outside back cover

D.C. Wyllie	170	Calibration of rock fall modeling parameters
A. Torabi and Z. Zarifi	184	Energy release rate of propagating deformation bands and their hosted cracks
G. Blöcher, T. Reinsch, A. Hassanzadegan, H. Milsch and G. Zimmermann	191	Direct and indirect laboratory measurements of poroelastic properties of two consolidated sandstones
P. Baud, T.-f. Wong and W. Zhu	202	Effects of porosity and crack density on the compressive strength of rocks
A. Rolland, R. Toussaint, P. Baud, N. Conil and P. Landrein	212	Morphological analysis of stylolites for paleostress estimation in limestones
V.H. Nguyen, N. Gland, J. Dautriat, C. David, J. Wassermann and J. Guélard	226	Compaction, permeability evolution and stress path effects in unconsolidated sand and weakly consolidated sandstone
E.-M. Charalampidou, S.A. Hall, S. Stanchits, G. Viggiani and H. Lewis	240	Shear-enhanced compaction band identification at the laboratory scale using acoustic and full-field methods
<i>Technical Notes</i>		
T. Funatsu, M. Kuruppu and K. Matsui	1	Effects of temperature and confining pressure on mixed-mode (I–II) and mode II fracture toughness of Kimachi sandstone
D. Li	145	Underground hydraulic mining of thin sub-layer as protective coal seam in coal mines
S.M. Hope, A.A. Moreira, J.S. Andrade Jr. and A. Hansen	181	Reservoir mapping by global correlation analysis