

174
T-69/jr1



Volume 68
www.elsevier.com

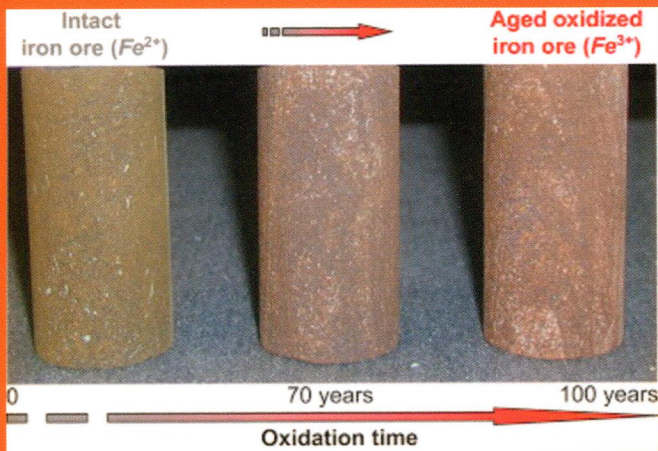
June 2014

ISSN 1365-1609

New developments and case studies in rock mechanics
and rock engineering

International Journal of Rock Mechanics and Mining Sciences

Editor-in-Chief: **R. W. Zimmerman**, *Imperial College, London, UK*



- fundamental rock behaviour
- *in situ* stress
- site investigation
- rock cutting and drilling
- underground excavations
- rock reinforcement and support
- dam engineering
- geothermal energy
- petroleum engineering
- radioactive waste disposal

CONTENTS

Articles

- | | | |
|---|-----|---|
| F.Q. Gao and D. Stead | 1 | The application of a modified Voronoi logic to brittle fracture modelling at the laboratory and field scale |
| S. Hedan, A.-L. Fauchille, V. Valle, J. Cabrera and P. Cosenza | 22 | One-year monitoring of desiccation cracks in Tournemire argillite using digital image correlation |
| M. Karakus and S. Perez | 36 | Acoustic emission analysis for rock-bit interactions in impregnated diamond core drilling |
| R. Gu and U. Ozbay | 44 | Distinct element analysis of unstable shear failure of rock discontinuities in underground mining conditions |
| O. Saeidi, S.R. Torabi, M. Ataei and J. Rostami | 55 | A stochastic penetration rate model for rotary drilling in surface mines |
| P. Yin, R.H.C. Wong and K.T. Chau | 66 | Coalescence of two parallel pre-existing surface cracks in granite |
| H.N. Wang, S. Utili and M.J. Jiang | 85 | An analytical approach for the sequential excavation of axisymmetric lined tunnels in viscoelastic rock |
| K. Thoeni, A. Giacomini, C. Lambert, S.W. Sloan and J.P. Carter | 107 | A 3D discrete element modelling approach for rockfall analysis with drapery systems |
| C.O. Aksoy | 120 | Proposed chart for the selection of impact hammer |
| A. Lavrov, A. Taghipour, J.D. Ytrehus, J. Mårdalen, H. Lund, T. Vrålstad, B. Lund, I.M. Carlsen, A. Saasen, S. Wold, J. Abdollahi, A. Torsvoll, A. Reyes, J.R. Næumann, J.C. Melchiorson and P. Skalle | 128 | Numerical and experimental study of the stability of non-circular boreholes in high-permeability formations |
| E. Bakhtiary, H. Xu and C. Arson | 136 | Probabilistic optimization of a continuum mechanics model to predict differential stress-induced damage in claystone |
| J.-H. Han and J.-J. Song | 150 | Statistical estimation of blast fragmentation by applying stereophotogrammetry to block piles |
| E. Asadollahpour, R. Rahmangebaj, A. Asghari and A. Abdollahipour | 159 | Back analysis of closure parameters of Panet equation and Burger's model of Babolak water tunnel conveyance |
| <i>Technical Notes</i> | | |
| A. Hsieh, P. Dight and A.V. Dyskin | 15 | Ghost Kaiser effect at low stress |
| X. Tan, H. Konietzky and T. Frühwirt | 167 | Laboratory observation and numerical simulation of permeability evolution during progressive failure of brittle rocks |

IJRMMS now has a dedicated WWW page: <http://www.elsevier.com/locate/ijrmms>

Int. J. Rock Mech. Min. Sci. is Indexed/Abstracted in: Appl. Mech. Rev., Cam. Sci. Abstr., Curr. Cont./Eng. Tech. & Appl. Sci., Eng. Ind., Curr. Cont. Sci. Cit. Ind., Curr. Cont. SCISEARCH Data, Geo. Abstr., Geo. Bib. & Ind., INSPEC Data., Int. Civil Eng. Abstr., Mater. Sci. Cit. Ind., PASCAL-CNRS Data., Res. Alert. Also covered in the abstract and citation database SCOPUS®. Full text available in ScienceDirect®.



1365-1609(201406)68:C;1-4

ISSN 1365-1609