

Volume 70  
www.elsevier.com

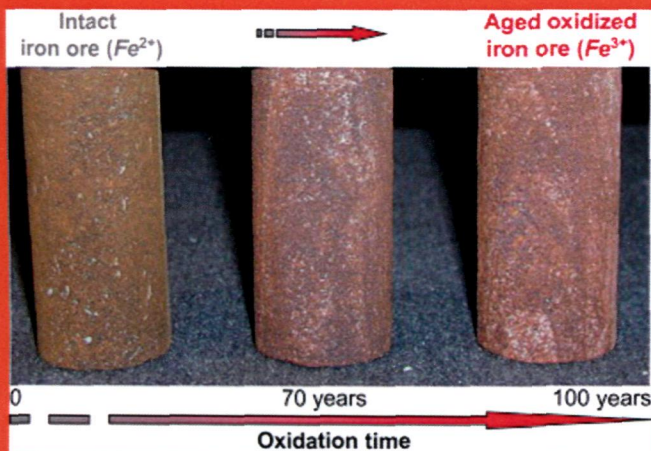
September 2014

ISSN 1365-1609

New developments and case studies in rock mechanics  
and rock engineering

# International Journal of Rock Mechanics and Mining Sciences

Editor-in-Chief: R. W. Zimmerman, *Imperial College, London, UK*



- fundamental rock behaviour
- *in situ* stress
- site investigation
- rock cutting and drilling
- underground excavations
- rock reinforcement and support
- dam engineering
- geothermal energy
- petroleum engineering
- radioactive waste disposal

Available online at [www.sciencedirect.com](http://www.sciencedirect.com)

**ScienceDirect**



## CONTENTS

## Articles

- |  |     |  |
|--|-----|--|
| <b>A.M. Remennikov, V. Mutton, S. Nimbalkar and T. Ren</b>               | 1   | Experimental and numerical investigation of high-yield grout ore pass plugs to resist impact loads                                   |
| <b>E. Wang, H. Jia, D. Song, N. Li and W. Qian</b>                       | 16  | Use of ultra-low-frequency electromagnetic emission to monitor stress and failure in coal mines                                      |
| <b>A. Serrano, C. Olalla and R.A. Galindo</b>                            | 33  | Micromechanical basis for shear strength of rock discontinuities   |
| <b>D. Deb and K.C. Das</b>   | 47  | A new doubly enriched finite element for modelling grouted bolt crossed by rock joint  |
| <b>W.A. Griffith, J. Becker, K. Cione, T. Miller and E. Pan</b>          | 59  | 3D topographic stress perturbations and implications for ground control in underground coal mines                                    |
| <b>A.-z. Lu, N. Zhang and L. Kuang</b>                                   | 69  | Analytic solutions of stress and displacement for a non-circular tunnel at great depth including support delay                       |
| <b>E. Rougier, E.E. Knight, S.T. Broome, A.J. Sussman and A. Munjiza</b> | 101 | Validation of a three-dimensional Finite-Discrete Element Method using experimental results of the Split Hopkinson Pressure Bar test |
| <b>A. Bahri Najafi, G.R. Saeedi and M.A. Ebrahimi Farsangi</b>           | 115 | Risk analysis and prediction of out-of-seam dilution in longwall mining  |
| <b>S. Roateşi</b>  | 123 | Analytical and numerical approach for tunnel face advance in a viscoplastic rock mass  |
| <b>J.-p. Zuo, H.-p. Xie, F. Dai and Y. Ju</b>                            | 133 | Three-point bending test investigation of the fracture behavior of siltstone after thermal treatment                                 |
| <b>H. Tian, M. Ziegler and T. Kempka</b>                                 | 144 | Physical and mechanical behavior of claystone exposed to temperatures up to 1000°C   |
| <b>K. Amiri Hossaini, N. Babanouri and S. Karimi Nasab</b>               | 154 | The influence of asperity deformability on the mechanical behavior of rock joints  |
| <b>F. Ferrari, T. Apuani and G.P. Giani</b>                              | 162 | Rock Mass Rating spatial estimation by geostatistical analysis   |
| <b>Y. Li, Q. Wang, J. Chen, L. Han and S. Song</b>                       | 177 | Identification of structural domain boundaries at the Songta dam site based on nonparametric tests                                   |
| <b>M. Masri, M. Sibai, J.F. Shao and M. Mainguy</b>                      | 185 | Experimental investigation of the effect of temperature on the mechanical behavior of Tournemire shale                               |

*continued on inside back cover*IJRMMS now has a dedicated WWW page: <http://www.elsevier.com/locate/ijrmms>

*Int. J. Rock Mech. Min. Sci.* is Indexed/Abstracted in: Appl. Mech. Rev., Cam. Sci. Abstr., Curr. Cont./Eng. Tech. & Appl. Sci., Eng. Ind., Curr. Cont. Sci. Cit. Ind., Curr. Cont. SCISEARCH Data, Geo. Abstr., Geo. Bib. & Ind., INSPEC Data., Int. Civil Eng. Abstr., Mater. Sci. Cit. Ind., PASCAL-CNRS Data., Res. Alert. Also covered in the abstract and citation database SCOPUS®. Full text available in ScienceDirect®.



1365-1609(201409)70:C:1-0

ISSN 1365-1609

*continued from outside back cover*

|   |     |  |
|---|-----|--|
| <b>Z. Li, L. Dou, W. Cai, G. Wang, J. He, S. Gong and Y. Ding</b>   | 192 | Investigation and analysis of the rock burst mechanism induced within fault-pillars  |
| <b>J.E. Santos, R.M. Corredor and J.M. Carcione</b>   | 212 | Seismic velocity and Q anisotropy in fractured poroelastic media   |
| <b>S. Deng, H. Li, G. Ma, H. Huang and X. Li</b>  | 219 | Simulation of shale–proppant interaction in hydraulic fracturing by the discrete element method  |
| <b>S. Gu, Y. Liu and Z. Chen</b>  | 229 | Numerical study of dynamic fracture aperture during production of pressure-sensitive reservoirs  |
| <b>A.M. Suchowerska, J.P. Carter and R.S. Merifield</b>   | 240 | Horizontal stress under supercritical longwall panels  |
| <b>Y.-K. Lee, J.-W. Park and J.-J. Song</b>   | 252 | Model for the shear behavior of rock joints under CNL and CNS conditions   |
| <b>M. Gu and K.K. Mohanty</b>   | 273 | Effect of foam quality on effectiveness of hydraulic fracturing in shales  |
| <b>E. Aker, D. Kühn, V. Vavryčuk, M. Soldal and V. Oye</b>  | 286 | Experimental investigation of acoustic emissions and their moment tensors in rock during failure   |
| <b>B. Indraratna, W. Premadasa, E.T. Brown, A. Gens and A. Heitor</b>   | 296 | Shear strength of rock joints influenced by compacted infill   |
| <b>G.J. Khave</b>   | 308 | Delineating subterranean water conduits using hydraulic testing and machine performance parameters in TBM tunnel post-grouting               |
| <b>D. Song, E. Wang, Z. Liu, X. Liu and R. Shen</b>   | 318 | Numerical simulation of rock-burst relief and prevention by water-jet cutting  |
| <b>K. Miyakawa, T. Nohara, T. Tokiwa and M. Yamazaki</b>  | 332 | Seven-year history of vertical Hydraulic diffusivity related to excavation around an underground facility                                    |
| <b>A. Vervoort, K.-B. Min, H. Konietzky, J.-W. Cho, B. Debecker, Q.-D. Dinh, T. Frühwirt and A. Tavallali</b> | 343 | Failure of transversely isotropic rock under Brazilian test conditions   |
| <b>S. Shnorhokian, H.S. Mitri and D. Thibodeau</b>  | 353 | A methodology for calibrating numerical models with a heterogeneous rockmass   |
| <b>P.K. Singh, M.P. Roy and R.K. Paswan</b>   | 388 | Controlled blasting for long term stability of pit-walls   |
| <b>M. Schoenball, D.P. Sahara and T. Kohl</b>   | 400 | Time-dependent brittle creep as a mechanism for time-delayed wellbore failure  |
| <b>J. Meier and H. Bock</b>   | 407 | Stability of a block resting on an inclined plane—A classical problem revisited  |
| <b>A. Hsieh, A.V. Dyskin and P. Dight</b>   | 425 | The increase in Young's modulus of rocks under uniaxial compression  |
| <b>T.-T. Wang, J.-T. Hsu, C.-H. Chen and T.-H. Huang</b>  | 435 | Response of a tunnel in double-layer rocks subjected to harmonic P- and S-waves  |
| <b>M. Entacher, S. Lorenz and R. Galler</b>   | 450 | Tunnel boring machine performance prediction with scaled rock cutting tests  |
| <b>T. Saksala and A. Ibrahimbegovic</b>   | 460 | Anisotropic viscodamage–viscoplastic consistency constitutive model with a parabolic cap for rocks with brittle and ductile behaviour        |
| <b>Q. Lei, J.-P. Latham, J. Xiang, C.-F. Tsang, P. Lang and L. Guo</b>  | 507 | Effects of geomechanical changes on the validity of a discrete fracture network representation of a realistic two-dimensional fractured rock |

*contents continued on BM*

|   |     |  |
|---|-----|--|
| F. Krauß, R. Giese, C. Alexandrakis and S. Buske  | 524 | <b>Seismic travel-time and attenuation tomography to characterize the excavation damaged zone and the surrounding rock mass of a newly excavated ramp and chamber</b>        |
| Y. Zhang, Q. Xu, G. Chen, J.X. Zhao and L. Zheng  | 533 | <b>Extension of discontinuous deformation analysis and application in cohesive-frictional slope analysis</b>   |
| H.W. Reinhardt and O. Mielich   | 552 | <b>Fracture toughness of alkali-sensitive rocks in alkaline solution</b>   |
| L. Chen, G. Sheng and G. Chen   | 559 | <b>Investigation of impact dynamics of roof bolting with passive friction control</b>  |
| S. Kelkar, K. Lewis, S. Karra, G. Zyzoloski, S. Rapaka, H. Viswanathan, P.K. Mishra, S. Chu, D. Coblentz and R. Pawar | 569 | <b>A simulator for modeling coupled thermo-hydro-mechanical processes in subsurface geological media</b>   |
| A. Eckert and X. Liu  | 581 | <b>An improved method for numerically modeling the minimum horizontal stress magnitude in extensional stress regimes</b>   |
| T.J. Massart and A.P.S. Selvadurai  | 593 | <b>Computational modelling of crack-induced permeability evolution in granite with dilatant cracks</b>   |
| <i>Technical Notes</i>  |     |  |
| L. Wang, Z. Chen, H. Kong and H. Shen   | 26  | <b>Effects of pore pressure on permeability of sandstone during bending deformation</b>  |
| P. Yin and G.-F. Zhao   | 82  | <b>Stochastic reconstruction of Gosford sandstone from surface image</b>   |
| C.-P. Lu and L.-M. Dou  | 90  | <b>The relationship between vertical stress gradient, seismic, and electromagnetic emission signals at Sanhejian coal mine, China</b>  |
| S.-j. Chen, W.-j. Guo, H. Zhou, B. Shen and J.-b. Liu   | 109 | <b>Field investigation of long-term bearing capacity of strip coal pillars</b>   |
| W. Jin, M. Gao, R. Zhang and G. Zhang   | 201 | <b>Analytical expressions for the size distribution function of elliptical joints</b>  |
| Y. Chen, P. Cao, D. Mao, C. Pu and X. Fan   | 264 | <b>Morphological analysis of sheared rock with water-rock interaction effect</b>   |
| Y. Kovalyshen, A.P. Bungler, J. Kear and D. Kasperczyk  | 368 | <b>Comparison between ultrasonic and photometric methods for hydraulic fracture laboratory monitoring</b>  |
| S.D.C. Walsh, I.N. Lomov, T.W. Wideman and J.M. Potter  | 375 | <b>Size dependent spall aspect ratio and its effects in thermal spallation</b>   |
| S. Shao, P.L.P. Wasantha, P.G. Ranjith and B.K. Chen  | 381 | <b>Effect of cooling rate on the mechanical behavior of heated Strathbogie granite with different grain sizes</b>  |
| M.I. Alvarez-Fernández, C. Gonzalez-Nicieza, F. Lopez-Gayarre, M.R. Avial-Llardent and A. Argüelles-Amado             | 418 | <b>A new procedure for in situ determination of the Poisson ratio of a rock mass</b>   |
| J.L. Porathur, S. Srikrishnan, C.P. Verma, J.C. Jhanwar and P. Pal Roy  | 444 | <b>Slope stability assessment approach for multiple seams Highwall Mining extractions</b>  |
| J.-P. Yang, W.-Z. Chen, Y.-h. Dai and H.-D. Yu  | 474 | <b>Numerical determination of elastic compliance tensor of fractured rock masses by finite element modeling</b>  |
| B. Indraratna, S. Thirukumaran, E.T. Brown, W. Premadasa and W. Gale  | 483 | <b>A technique for three-dimensional characterisation of asperity deformation on the surface of sheared rock joints</b>  |
| L.P. Frash, M. Gutierrez and J. Hampton   | 496 | <b>True-triaxial apparatus for simulation of hydraulically fractured multi-borehole hot dry rock reservoirs</b>  |
| A.H. Shabelansky, Y. Bernabe, U. Mok and J.B. Evans   | 546 | <b>Temperature influence on permeability of Sioux quartzite containing mixtures of water and carbon dioxide</b>  |
| M.H.B. Nasser, S.D. Goodfellow, L. Lombos and R.P. Young  | 605 | <b>Erratum to "3-D transport and acoustic properties of Fontainebleau sandstone during true-triaxial deformation experiments" [Int. J. Rock Mech. Min. Sci. (2014) 1–18]</b> |