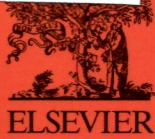


FLU
169/511



Volume 71
www.elsevier.com

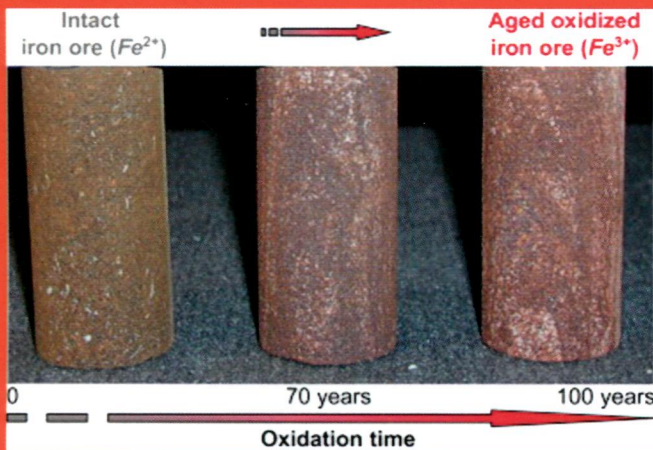
October 2014

ISSN 1365-1609

New developments and case studies in rock mechanics
and rock engineering

International Journal of Rock Mechanics and Mining Sciences

Editor-in-Chief: R. W. Zimmerman, *Imperial College, London, UK*



- fundamental rock behaviour
- *in situ* stress
- site investigation
- rock cutting and drilling
- underground excavations
- rock reinforcement and support
- dam engineering
- geothermal energy
- petroleum engineering
- radioactive waste disposal

CONTENTS

Articles

- | | | |
|--|-----|--|
| A.F.A. Babiker, C.C. Smith, M. Gilbert and J.P. Ashby | 1 | Non-associative limit analysis of the toppling-sliding failure of rock slopes |
| Z. Huang, Z. Jiang, S. Zhu, Z. Qian and D. Cao | 12 | Characterizing the hydraulic conductivity of rock formations between deep coal and aquifers using injection tests |
| E. Gravanis, L. Pantelidis and D.V. Griffiths | 19 | An analytical solution in probabilistic rock slope stability assessment based on random fields |
| A. Rabbani and S. Jamshidi | 25 | Specific surface and porosity relationship for sandstones for prediction of permeability |
| B.A. Poulsen, B. Shen, D.J. Williams, C. Huddlestone-Holmes, N. Erarslan and J. Qin | 41 | Strength reduction on saturation of coal and coal measures rocks with implications for coal pillar strength |
| Y. Chen, S. Hu, K. Wei, R. Hu, C. Zhou and L. Jing | 64 | Experimental characterization and micromechanical modeling of damage-induced permeability variation in Beishan granite |
| A. Das and G. Buscarera | 91 | Simulation of localized compaction in high-porosity calcarenite subjected to boundary constraints |
| H. Chen, Y. Cheng, T. Ren, H. Zhou and Q. Liu | 105 | Permeability distribution characteristics of protected coal seams during unloading of the coal body |
| N. Bahrani, P.K. Kaiser and B. Valley | 117 | Distinct element method simulation of an analogue for a highly interlocked, non-persistently jointed rockmass |
| P.L. Menezes, M.R. Lovell, I.V. Avdeev and C.F. Higgs III | 131 | Studies on the formation of discontinuous rock fragments during cutting operation |
| Y. Kang, Q. Liu, G. Gong and H. Wang | 143 | Application of a combined support system to the weak floor reinforcement in deep underground coal mine |
| K.H. Park | 151 | <i>Similarity solution for a spherical or circular opening in elastic-strain softening rock mass</i> |
| J. Wang, S. Yang, Y. Li, L. Wei and H. Liu | 160 | Caving mechanisms of loose top-coal in longwall top-coal caving mining method |
| D. Xuan, J. Xu and W. Zhu | 176 | Dynamic disaster control under a massive igneous sill by grouting from surface boreholes |

*continued on inside back cover*IJRMMS now has a dedicated WWW page: <http://www.elsevier.com/locate/ijrmms>

Int. J. Rock Mech. Min. Sci. is Indexed/Abstracted in: Appl. Mech. Rev., Cam. Sci. Abstr., Curr. Cont./Eng. Tech. & Appl. Sci., Eng. Ind., Curr. Cont. Sci. Cit. Ind., Curr. Cont. SCISEARCH Data, Geo. Abstr., Geo. Bib. & Ind., INSPEC Data., Int. Civil Eng. Abstr., Mater. Sci. Cit. Ind., PASCAL-CNRS Data., Res. Alert. Also covered in the abstract and citation database SCOPUS®. Full text available in ScienceDirect®.



1365-1609(201410)71:C:1-P

ISSN 1365-1609

continued from outside back cover

Z. Li	204	Criteria for jet cavitation and cavitation jet drilling
Z.X. Zhang	208	Effect of double-primer placement on rock fracture and ore recovery
Y. Li, W. Zhu, J. Fu, Y. Guo and Y. Qi	224	A damage rheology model applied to analysis of splitting failure in underground caverns of Jinping I hydropower station
J. Klopčič and J. Logar	235	Effect of relative orientation of anisotropy planes to tunnel axis on the magnitude of tunnelling displacements
T. Zhao, Z. Zhang, Y. Tan, C. Shi, P. Wei and Q. Li	249	An innovative approach to thin coal seam mining of complex geological conditions by pressure regulation
B. Li, Y. Jiang, T. Mizokami, K. Ikusada and Y. Mitani	258	Anisotropic shear behavior of closely jointed rock masses
S.K. Kourkoulis and Ch.F. Markides	272	Stresses and displacements in a circular ring under parabolic diametral compression
J. Nemcik, S. Ma, N. Aziz, T. Ren and X. Geng	293	Numerical modelling of failure propagation in fully grouted rock bolts subjected to tensile load
D.P. Sahara, M. Schoenball, T. Kohl and B.I.R. Müller	301	Impact of fracture networks on borehole breakout heterogeneities in crystalline rock
F.L.G. Pereira, D. Roehl, J. Paulo Laquini, M.F.F. Oliveira and A.M. Costa	310	Fault reactivation case study for probabilistic assessment of carbon dioxide sequestration
P. Sicsic and P. Bérest	320	Thermal cracking following a blowout in a gas-storage cavern
D. Hu, T. Long, C. Liu, G. Yang and X. Han	330	Swelling movement induced by underground explosion of aluminized explosive in multilayered compact material
L. Chen, J.F. Liu, C.P. Wang, J. Liu, R. Su and J. Wang	340	Characterization of damage evolution in granite under compressive stress condition and its effect on permeability
J.R. Gage, H.F. Wang, D. Fratta and A.L. Turner	350	<i>In situ</i> measurements of rock mass deformability using fiber Bragg grating strain gauges
T. Ishida, T. Kanagawa and Y. Uchita	362	Acoustic emission induced by progressive excavation of an underground powerhouse
J. Akbardoost, M.R. Ayatollahi, M.R.M. Aliha, M.J. Pavier and D.J. Smith	369	Size-dependent fracture behavior of Guiting limestone under mixed mode loading
J.A. Sanchidrián, F. Ouchterlony, P. Segarra and P. Moser	381	Size distribution functions for rock fragments
L. Chen, G. Duveau, A. Poutrel, Y. Jia, J.F. Shao and N. Xie	405	Numerical study of the interaction between adjacent galleries in a high-level radioactive waste repository
M. Gomar, I. Goodarznia and S.R. Shadizadeh	418	Transient thermo-poroelastic finite element analysis of borehole breakouts
A. Bandini, P. Berry, E. Bemporad, M. Sebastiani and D. Chicot	429	Role of grain boundaries and micro-defects on the mechanical response of a crystalline rock at multiscale
<i>Technical Notes</i>		
R.K. Wattimena	33	Predicting the stability of hard rock pillars using multinomial logistic regression
D.Q. Dan and H. Konietzky	53	Numerical simulations and interpretations of Brazilian tensile tests on transversely isotropic rocks
X. Xia, H. Li, J. Niu, J. Li and Y. Liu	77	Experimental study on amplitude change of blast vibrations through steps and ditches

contents continued on BM

Contents continued from inside back cover

A. Serrano, C. Olalla and R.A Galindo	83	Ultimate bearing capacity at the tip of a pile in rock based on the modified Hoek–Brown criterion
C.-I. Wang	171	Identification of early-warning key point for rockmass instability using acoustic emission/microseismic activity monitoring
S. Liu and J. Xu	188	Mechanical properties of Qinling biotite granite after high temperature treatment
L. Li, K. Wu and D.-W. Zhou	194	AutoCAD-based prediction of 3D dynamic ground movement for underground coal mining
Z.X. Zhang	217	Blast-induced dynamic rock fracture in the surfaces of tunnels
S. Maleki, A. Moradzadeh, R. Ghavami Riabi and F. Sadaghzadeh	395	Comparison of Several Different Methods of in situ stress determination