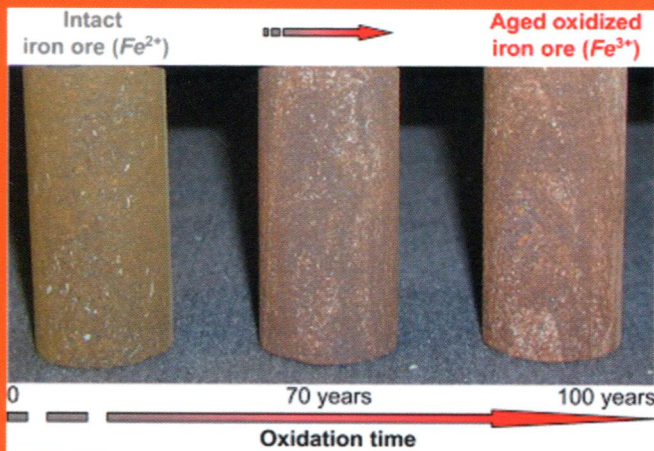


New developments and case studies in rock mechanics
and rock engineering

International Journal of Rock Mechanics and Mining Sciences

Editor-in-Chief: **R. W. Zimmerman**, *Imperial College, London, UK*



- fundamental rock behaviour
- *in situ* stress
- site investigation
- rock cutting and drilling
- underground excavations
- rock reinforcement and support
- dam engineering
- geothermal energy
- petroleum engineering
- radioactive waste disposal

CONTENTS

Articles

- | | | |
|--|-----|---|
| C. Cao, T. Ren, C. Cook and Y. Cao | 16 | Analytical approach in optimising selection of rebar bolts in preventing rock bolting failure |
| R. Resende, L. Lamas, J. Lemos and R. Calçada | 26 | Stress wave propagation test and numerical modelling of an underground complex |
| B. Figueiredo, F.H. Cornet, L. Lamas and J. Muralha | 37 | Determination of the stress field in a mountainous granite rock mass |
| X.-P. Zhou, Y.-D. Shou, Q.-H. Qian and M.-H. Yu | 54 | Three-dimensional nonlinear strength criterion for rock-like materials based on the micromechanical method |
| A. Ferrari, V. Favero, P. Marschall and L. Laloui | 61 | Experimental analysis of the water retention behaviour of shales |
| J.-L. Le, J. Manning and J.F. Labuz | 71 | Scaling of fatigue crack growth in rock |
| D. Che and K. Ehmann | 80 | Experimental study of force responses in polycrystalline diamond face turning of rock |
| R. Fernandez-Rodriguez, C. Gonzalez-Nicieza, F. Lopez-Gayarre and E. Amor-Herrera | 92 | Characterization of intensely jointed rock masses by means of in situ penetration tests |
| Y.-C. Chiu, T.-T. Wang and T.-H. Huang | 117 | A novel characteristic matrix approach for analyzing displacement patterns of tunnels in operation |
| H. Zhu, Y. Zuo, X. Li, J. Deng and X. Zhuang | 127 | Estimation of the fracture diameter distributions using the maximum entropy principle |
| T. Xia, F. Zhou, J. Liu, S. Hu and Y. Liu | 138 | A fully coupled coal deformation and compositional flow model for the control of the pre-mining coal seam gas extraction |
| P. Jeanne, J. Rutqvist, P.F. Dobson, M. Walters, C. Hartline and J. Garcia | 149 | The impacts of mechanical stress transfers caused by hydromechanical and thermal processes on fault stability during hydraulic stimulation in a deep geothermal reservoir |
| W. Abdellah, G.D. Raju, H.S. Mitri and D. Thibodeau | 173 | Stability of underground mine development intersections during the life of a mine plan |
| T. Zeng, J.F. Shao and W.Y. Xu | 182 | Modeling of viscoplastic deformation in geomaterials with a polycrystalline approach |

*continued on inside back cover*IJRMMS now has a dedicated WWW page: <http://www.elsevier.com/locate/ijrmms>

Int. J. Rock Mech. Min. Sci. is Indexed/Abstracted in: Appl. Mech. Rev., Cam. Sci. Abstr., Curr. Cont./Eng. Tech. & Appl. Sci., Eng. Ind., Curr. Cont. Sci. Cit. Ind., Curr. Cont. SCISEARCH Data, Geo. Abstr., Geo. Bib. & Ind., INSPEC Data., Int. Civil Eng. Abstr., Mater. Sci. Cit. Ind., PASCAL-CNRS Data., Res. Alert. Also covered in the abstract and citation database SCOPUS®. Full text available in ScienceDirect®.



1365-1609(201412)72:C;1-I

ISSN 1365-1609

continued from outside back cover

G. Zhang, M. Karakus, H. Tang, Y. Ge and L. Zhang	191	A new method estimating the 2D Joint Roughness Coefficient for discontinuity surfaces in rock masses
S. Mahdevari, K. Shahriar, S. Yagiz and M. Akbarpour Shirazi	214	A support vector regression model for predicting tunnel boring machine penetration rates
O.Z. Hekimoglu	230	Studies on increasing the performance of chain saw machines for mechanical excavation of marbles and natural stones
M.W. McClure and R.N. Horne	242	An investigation of stimulation mechanisms in Enhanced Geothermal Systems
L.J. Yin, Q.M. Gong, H.S. Ma, J. Zhao and X.B. Zhao	261	Use of indentation tests to study the influence of confining stress on rock fragmentation by a TBM cutter
A. Zubelewicz, E. Rougier, M. Ostoja-Starzewski, E.E. Knight, C. Bradley and H.S. Viswanathan	277	A mechanisms-based model for dynamic behavior and fracture of geomaterials
Y. Shi, J. Yang and S. Wang	283	Sub-horizontal reinforcement of weathered granite before tunneling beneath a spillway
G. Singh and R.W. Zimmerman	311	Modification of Griffith–McClintock–Walsh model for crack growth under compression to incorporate stick-slip along the crack faces
P. Lai, C. Samson and P. Bose	325	Visual enhancement of 3D images of rock faces for fracture mapping
<i>Technical Notes</i>		
V. Palchik	1	Time-dependent methane emission from vertical prospecting boreholes drilled to abandoned mine workings at a shallow depth
W. Yang, B.-q. Lin, Q. Yan and C. Zhai	8	Stress redistribution of longwall mining stope and gas control of multi-layer coal seams
M. Khramchenkov and E. Khramchenkov	49	A new approach to obtain rheological relations for saturated porous media
M.-T. Hamzaban, H. Memarian, J. Rostami and H. Ghasemi-Monfared	100	Study of rock–pin interaction in cerchar abrasivity test
V. Fattahpour, B.A. Baudet, M. Moosavi, M. Mehranpour and A. Ashkezari	109	Effect of grain characteristics and cement content on the unconfined compressive strength of artificial sandstones
D.S. Yang, L.F. Chen, S.Q. Yang, W.Z. Chen and G.J. Wu	164	Experimental investigation of the creep and damage behavior of Linyi red sandstone
Y. Zhang and D. Stead	199	Modelling 3D crack propagation in hard rock pillars using a synthetic rock mass approach
L. You, Y. Kang, Z. Chen, Q. Chen and B. Yang	294	Wellbore instability in shale gas wells drilled by oil-based fluids
N.H. Maerz and J.N. Otoo	300	Integrating discontinuity trace and facet orientation Measurements for improved discontinuity data analysis
G. Wei	304	Study on the width of the non-elastic zone in inclined coal pillar for strip mining
N. Skoczylas and K. Godyń	319	Evaluating selected lithological features using photographs taken with an introsopic camera in boreholes