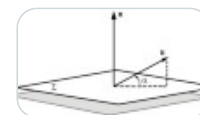




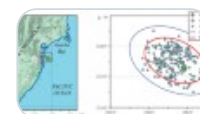
18 articles in this issue

NDC-Type Tectonic Earthquakes in the Subduction Zones within Northwestern Segment of the Pacific Ring of Fire



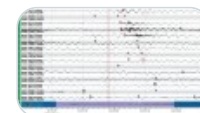
OriginalPaper | 16 January 2026 | Pages: 913 - 924

Aftershocks of the April 3, 2023, *M*_w 6.6 Vilyuchinsk Earthquake, Kamchatka



OriginalPaper | 16 January 2026 | Pages: 925 - 937

Automation of Processing Large Volumes of Seismological Data When Studying Seismicity in the Khuvs gul Region for 2014–2016



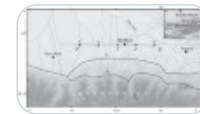
OriginalPaper | 16 January 2026 | Pages: 938 - 950

Analytical Probabilistic Seismic Hazard Calculation for Point Source



OriginalPaper | 16 January 2026 | Pages: 951 - 957

Modeling a Seismological Temperature Prediction at Upper Crustal Depths



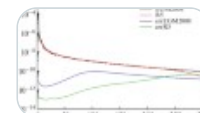
OriginalPaper | 16 January 2026 | Pages: 958 - 965

The Earth's Crust of the West Orenburg Region Derived from Receiver Function Data



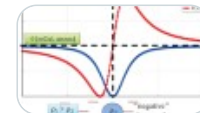
OriginalPaper | 16 January 2026 | Pages: 966 - 972

Satellite Gradientometer: Principles of Measuring the Earth's Gravitational Field



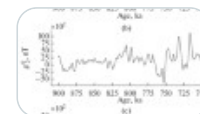
OriginalPaper | 16 January 2026 | Pages: 973 - 997

Compilation of Maps of Earth's Gravitational Field Parameters Based on Data from Joint Measurements Using a Plumb Line Deviation Meter and a Gravimeter



OriginalPaper | 16 January 2026 | Pages: 998 - 1003

Spectral Characteristics of the Magnetic Field During the Matuyama–Brunhes Reversal



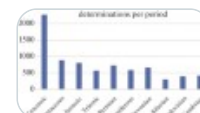
OriginalPaper | 16 January 2026 | Pages: 1004 - 1008

Comparative Analysis of the Archaeointensity of the Geomagnetic Field Recorded in Brick Fragments from a Roman Kiln (Village of Dragovishtitsa, Western Bulgaria)



OriginalPaper | 16 January 2026 | Pages: 1009 - 1026

Rock Magnetic and Paleomagnetic Results of Devonian Deposits from the Pavlovsk Quarry (Voronezh Region)



OriginalPaper | 16 January 2026 | Pages: 1027 - 1044

Test of Conglomerates in the Neoproterozoic Katav Formation (Southern Urals)



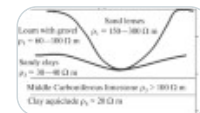
OriginalPaper | 16 January 2026 | Pages: 1045 - 1057

Simultaneous Observations of the Gamma Background from Soil Radionuclides and the Electrical Conductivity of the Near-Surface Atmosphere



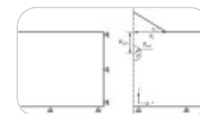
OriginalPaper | 16 January 2026 | Pages: 1058 - 1069

Mobile Pulsed Electromagnetic Soundings: Feasibility and Potential of UAV-Based Survey Technology



OriginalPaper | 16 January 2026 | Pages: 1070 - 1081

On the Applicability of Mogi Model to Interpret Displacements on Volcanic Slopes



OriginalPaper | 16 January 2026 | Pages: 1082 - 1091

Tracking Fracture Development by Clustering Pulses of Thermally Stimulated Acoustic Emission in the Absence of Location



OriginalPaper | 16 January 2026 | Pages: 1092 - 1107

Creation of an Early Warning System for Strong Earthquakes for the Territory of Kyrgyzstan and Uzbekistan



OriginalPaper | 16 January 2026 | Pages: 1108 - 1118

Disturbances of Subionospheric Electromagnetic Signals and Strong Earthquakes (from Observations on the Kamchatka Peninsula in 2023–2024)



OriginalPaper | 16 January 2026 | Pages: 1119 - 1129
