

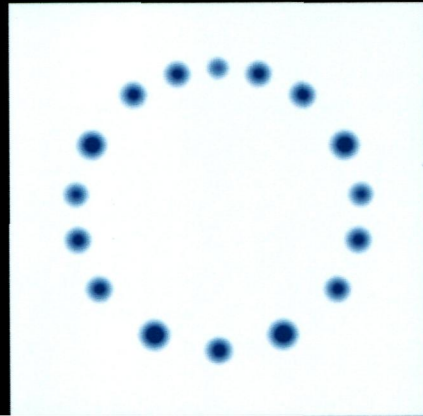
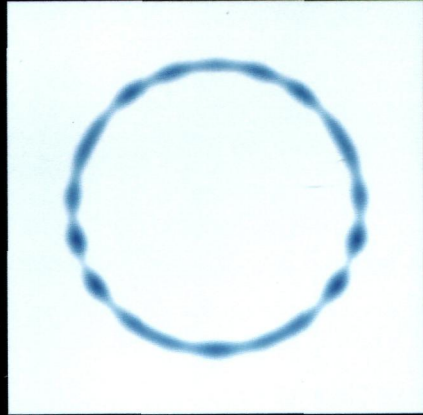
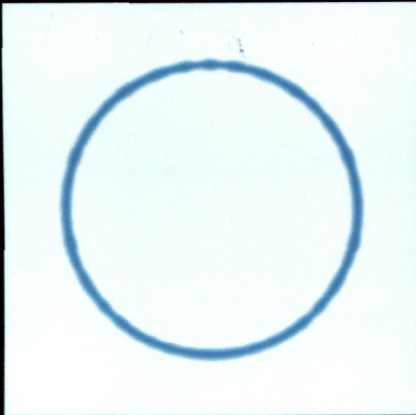
174  
J80/f

CAMBRIDGE  
UNIVERSITY PRESS

10 March 2013

# Journal of Fluid Mechanics

VOLUME 718



- 1 Natural logarithms  
**B. J. McKeon**
- 5 Control of stationary cross-flow modes in a Mach 3.5 boundary layer using patterned passive and active roughness  
**C. Y. Schuele, T. C. Corke & E. Matlis**
- 39 Self-limiting and regenerative dynamics of perturbation growth on a vortex column  
**F. Hussain & E. Stout**
- S 89 The role of large-scale vortical structures in transient convective heat transfer augmentation  
**D. O. Hubble, P. P. Vlachos & T. E. Diller**
- 116 Initial growth of a disturbance in a boundary layer influenced by a circular cylinder wake  
**G. He, J. Wang & C. Pan**
- 131 Nonlinear vorticity-banding instability in granular plane Couette flow: higher-order Landau coefficients, bistability and the bifurcation scenario  
**P. Shukla & M. Alam**
- 181 Libration-induced mean flow in a spherical shell  
**A. Sauret & S. Le Dizès**
- 210 The role of wake stiffness on the wake-induced vibration of the downstream cylinder of a tandem pair  
**G. R. S. Assi, P. W. Bearman, B. S. Carmo, J. R. Meneghini, S. J. Sherwin & R. H. J. Willden**
- 246 Stability of a liquid ring on a substrate  
**A. G. González, J. A. Diez & L. Kondic**
- 280 Phase-averaged equation for water waves  
**O. Gramstad & M. Stiassnie**
- 304 Experimental evidence for a short-wave global mode in film flow along periodic corrugations  
**Z. Cao, M. Vlachogiannis & V. Bontozoglou**
- 321 Skin friction on a moving wall and its implications for swimming animals  
**U. Ehrenstein & C. Eloy**
- 347 Lattice ellipsoidal statistical BGK model for thermal non-equilibrium flows  
**J. Meng, Y. Zhang, N. G. Hadjiconstantinou, G. A. Radtke & X. Shan**
- 371 Nonlinear long waves over a muddy beach  
**E.-I. Garnier, Z. Huang & C. C. Mei**
- S 398 Direct numerical simulations of local and global torque in Taylor–Couette flow up to  $Re = 30\,000$   
**H. J. Brauckmann & B. Eckhardt**
- 428 Longwave Marangoni convection in a surfactant solution between poorly conducting boundaries  
**S. Shklyaev & A. A. Nepomnyashchy**
- 457 Stability of a Gaussian pancake vortex in a stratified fluid  
**M. E. Negretti & P. Billant**
- 481 Contact lines with a  $180^\circ$  contact angle  
**E. S. Benilov & M. Vynnycky**
- 507 A simple constitutive model for predicting the pressure histories developed behind rigid porous media impinged by shock waves  
**O. Ram & O. Sadot**
- 524 Dispersive shock waves in viscously deformable media  
**N. K. Lowman & M. A. Hoefler**
- 558 Fluid drainage from the edge of a porous reservoir  
**Z. Zheng, B. Soh, H. E. Huppert & H. A. Stone**
- S 569 Influence of membrane viscosity on capsule dynamics in shear flow  
**A. Yazdani & P. Bagchi**
- 596 Self-similar mean dynamics in turbulent wall flows  
**J. C. Klewicki**

Contents continued on inside back cover.

**JFM Rapids (online only)**

R1 Stabilization of a swept-wing boundary layer by distributed roughness elements  
**S. M. Hosseini, D. Tempelmann, A. Hanifi,  
& D. S. Henningson**

R2 Stratified precessional flow in spherical geometry  
**X. Wei & A. Tilgner**

*S* indicates supplementary data or movies available online.