

Networks and
Switching

Systems and
Subsystems

Fibers and Cables

Active Components

Passive Components

Integrated Optics

Optoelectronics

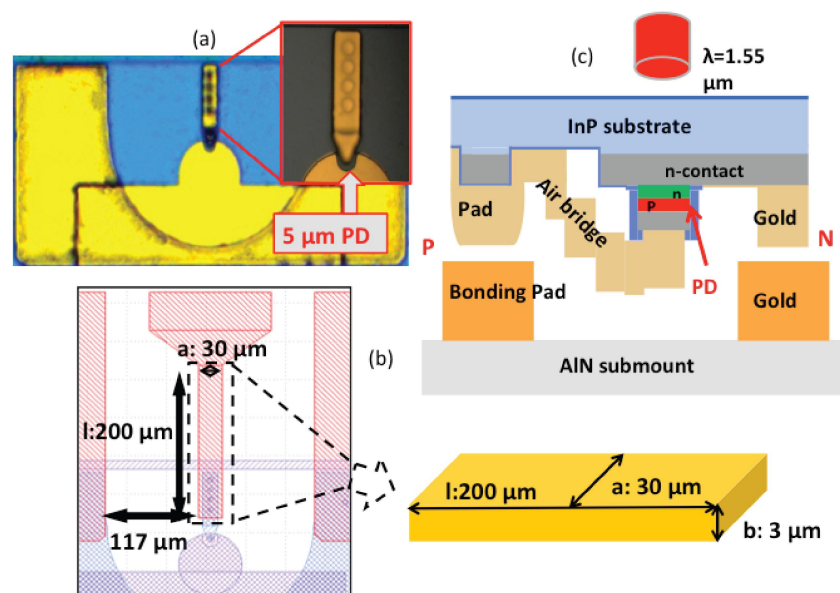
Sensors

Theory

Journal of Lightwave Technology

This Print Collection Contains the Following Issues:

May 1, 2016	Volume 34	Number 9	JLTEDG
May 15, 2016	Volume 34	Number 10	
June 1, 2016	Volume 34	Number 11	
June 15, 2016	Volume 34	Number 12	



For the May 1, 2016 issue, see p. 2077 for the Table of Contents.
 For the May 15, 2016 issue, see p. 2357 for the Table of Contents.
 For the June 1, 2016 issue, see p. 2588 for the Table of Contents.
Special Issue on Optical Interconnects
 For the June 15, 2016 issue, see p. 2881 for the Table of Contents.

Journal of Lightwave Technology

A JOINT IEEE / OSA PUBLICATION

May 15, 2016

VOLUME 34

NUMBER 10

JLTEDG

(ISSN 0733-8724)

Networks

- Load-Adaptive Resource Management for Green Wireless-Optical Broadband Access Network (WOBAN) *M. Ahmed, I. Ahmad, and D. Habibi* 2359
- Cost-Effective Survivable Virtual Optical Network Mapping in Flexible Bandwidth Optical Networks *B. Chen, J. Zhang, W. Xie, J. P. Jue, Y. Zhao, and G. Shen* 2398
- Design and Implementation of a GPON-Based Virtual OpenFlow-Enabled SDN Switch *S. S. W. Lee, K.-Yi Li, and M.-S. Wu* 2552

Systems/Subsystems

- Fractional Fourier Transformation-Based Blind Chromatic Dispersion Estimation for Coherent Optical Communications *H. Zhou, B. Li, M. Tang, K. Zhong, Z. Feng, J. Cheng, A. P. T. Lau, C. Lu, S. Fu, P. P. Shum, and D. Liu* 2371
- Analog-to-Digital Conversion Using Sub-Nyquist Sampling Rate in Flexible Delay-Division Multiplexing OFDMA PONs *C.-C. Wei, H.-C. Liu, C.-T. Lin, and S. Chi* 2381
- Transmitter Made up of a Silicon Photonic IC and its Flip-Chipped CMOS IC Driver Targeting Implementation in FDMA-PON *S. Menezes, E. Temporiti, J. Lee, O. Dubray, M. Fournier, S. Bernabé, D. Baldi, B. Blampey, G. Minoia, M. Repposi, A. Myko, S. Messaoudène, L. Carroll, S. Abrate, R. Gaudino, P. O'Brien, and B. Charbonnier* 2391
- A Fully Integrated IEEE 802.15.7 Visible Light Communication Transmitter With On-Chip 8-W 85% Efficiency Boost LED Driver *F. Che, L. Wu, B. Hussain, X. Li, and C. P. Yue* 2419
- Optimum Detection of Two-Dimensional Carrier Modulations With Linear Phase Noise Using Received Amplitude and Phase Information and Performance Analysis *Q. Wang and P.-Y. Kam* 2439
- Demonstration of Nonlinear Inverse Synthesis Transmission Over Transoceanic Distances *S. T. Le, I. D. Philips, J. E. Prilepsky, P. Harper, A. D. Ellis, and S. K. Turitsyn* 2459
- Inter-Ring Band-Transfer Limited by Laser Wavelength Drift in DD MB-OFDM Metro Networks *Ricardo O. J. Soeiro, Tiago M. F. Alves, and Adolfo V. T. Cartaxo* 2473
- Comparison of One- and Three-Mode Phase-Sensitive Wavelength Multicasting *L. Liu, A. O. J. Wiberg, E. Myslivets, B. P.-P. Kuo, N. Alic, and S. Radic* 2491
- Vibration Influence on Hit Probability During Beaconless Spatial Acquisition *L. Friederichs, U. Sterr, and D. Dallmann* 2500
- A 50 Gb/s Transparent Indoor Optical Wireless Communications Link With an Integrated Localization and Tracking System *A. Gomez, K. Shi, C. Quintana, G. Faulkner, B. C. Thomsen, and D. O'Brien* 2510
- Impact of VLC on Light Emission Quality of White LEDs *W. O. Popoola* 2526

(Contents Continued on Page 2358)

JOURNAL OF LIGHTWAVE TECHNOLOGY (ISSN 0733-8724) is published semimonthly by the Institute of Electrical and Electronics Engineers, Inc. Responsibility for the contents rests upon the authors and not upon the IEEE, the Society/Council, or its members. **IEEE Corporate Office:** 3 Park Avenue, 17th Floor, New York, NY 10016-5997. **IEEE Operations Center:** 445 Hoes Lane, Piscataway, NJ 08854-4141. **NJ Telephone:** +1 732 981 0060. **Price/Publication Information:** Individual copies: IEEE Members \$20.00 (first copy only), nonmembers \$427.00 per copy. (Note: Postage and handling charge not included.) Member and nonmember subscription prices available upon request. Available in microfiche and microfilm. **Copyright and Reprint Permissions:** Abstracting is permitted with credit to the source. Libraries are permitted to photocopy for private use of patrons, provided the per-copy fee of \$31.00 is paid through the Copyright Clearance Center, 222 Rosewood Drive, Danvers, MA 01923. For all other copying, reprint, or republication permission, write to Copyrights and Permissions Department, IEEE Publications Administration, 445 Hoes Lane, Piscataway, NJ 08854-4141. Copyright © 2016 by the Institute of Electrical and Electronics Engineers, Inc. All rights reserved. **Postmaster:** Send address changes to JOURNAL OF LIGHTWAVE TECHNOLOGY, IEEE, 445 Hoes Lane, Piscataway, NJ 08854-4141. GST Registration No. 125634188. CPC Sales Agreement #40013087. Return undeliverable Canada addresses to: Pitney Bowes IMEX, P.O. Box 4332, Stanton Rd., Toronto, ON M5W 3J4, Canada. IEEE prohibits discrimination, harassment and bullying. For more information visit <http://www.ieee.org/nondiscrimination>. Printed in U.S.A.

Estimating the Performance of DD OFDM Optical Systems Impaired by In-Band Crosstalk Using the Moment Generating Function	<i>J. L. Rebola and A. V. T. Cartaxo</i>	2562
Enhanced Multi-Level Phase Quantizer for the Optical Processing of M-PSK Signals	<i>A. Bogris and E. Pikasis</i>	2571
Impact of Multipath Reflections on the Performance of Indoor Visible Light Positioning Systems	<i>W. Gu, M. Aminikashani, P. Deng, and M. Kavehrad</i>	2578
Fibers/Cables		
Tunable Fiber Polarization Filter by Filling Different Index Liquids and Gold Wire Into Photonic Crystal Fiber	<i>Q. Liu, S. Li, J. Li, C. Dou, X. Wang, G. Wang, and M. Shi</i>	2484
Integrated Optics/Optoelectronics		
Photonic and Omnidirectional Band Gap Engineering in One-Dimensional Photonic Crystals Consisting of Linearly Graded Index Material	<i>B. K. Singh, M. K. Chaudhari, and P. C. Pandey</i>	2431
Broadband Single-Polarization Single-Mode Operation in Photonic Crystal Fibers With Hexagonally Latticed Circular Airholes	<i>D. Lu and J. Liu</i>	2452
High Coupling Efficiency Silicon Waveguide to Metal–Insulator–Metal Waveguide Mode Converter	<i>Bing Qing Zhu, and Hon Ki Tsang</i>	2467
Surface Plasmon Resonance Waveguide Sensor in the Terahertz Regime	<i>J. Shibayama, K. Shimizu, J. Yamauchi, and H. Nakano</i>	2518
Large Optical Backplane With Embedded Graded-Index Glass Waveguides and Fiber-Flex Termination	<i>L. Brusberg, S. Whalley, R. C. A. Pitwon, F. R. Faridi, and H. Schröder</i>	2540
Sensors		
Fabrication and Characterization of Metal Oxide-Coated Long-Period Fiber Gratings	<i>L. Coelho, J. L. Santos, D. Viegas, and J. M. M. de Almeida</i>	2533
Theory		
Generation and Conversion of Higher Order Optical Vortices in Optical Fiber With Helical Fiber Bragg Gratings	<i>X. Zhang, A. Wang, R. Chen, Y. Zhou, H. Ming, and Q. Zhan</i>	2413
