



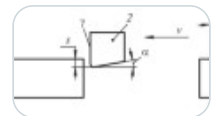
17 articles in this issue

### **Development of Approximation Synthesis Methods of Lever Mechanisms in the Kazakh School of TMM**



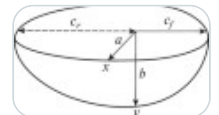
**MECHANICS OF MACHINES** | 11 January 2026 | Pages: S115 - S127

### **Algorithm for Estimating Residual Stresses in Workpieces during Cutting Using the Finite Element Analysis Method**



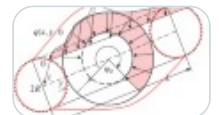
**RELIABILITY, STRENGTH, AND WEAR RESISTANCE OF MACHINES AND STRUCTURES** | 11 January 2026 | Pages: S128 - S135

### **Analysis of the Influence of Heat Flow Power on the Geometry of a Structure after Welding**



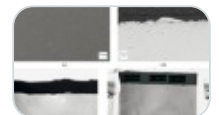
**RELIABILITY, STRENGTH, AND WEAR RESISTANCE OF MACHINES AND STRUCTURES** | 11 January 2026 | Pages: S136 - S144

### **Study of Nonlinear Dynamics of Power Structures of Space Vehicles**



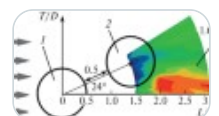
**RELIABILITY, STRENGTH, AND WEAR RESISTANCE OF MACHINES AND STRUCTURES** | 11 January 2026 | Pages: S145 - S152

### **Critical States of Titanium-Doped Metal–Carbon Coatings under Sliding Friction Conditions**



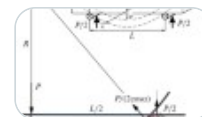
**RELIABILITY, STRENGTH, AND WEAR RESISTANCE OF MACHINES AND STRUCTURES** | 11 January 2026 | Pages: S153 - S161

### **Determination of Vibration Parameters of Pipe Systems Taking into Account Calculated Excitation Parameters in the Flow**



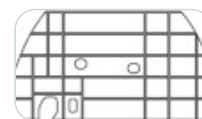
**RELIABILITY, STRENGTH, AND WEAR RESISTANCE OF MACHINES AND STRUCTURES** | 11 January 2026 | Pages: S162 - S167

## **Accounting for the Influence of Cylindrical Support Radii on the Determined Elastic-Strength Characteristics of Polymer Composites under Bending**



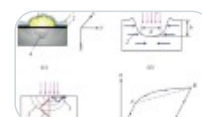
RELIABILITY, STRENGTH, AND WEAR RESISTANCE OF MACHINES AND STRUCTURES | 11 January 2026 |  
Pages: S168 - S176

## **General Approaches to Solving the Problems of Reducing Thermal Stresses and Boundary Conditions of the Problem of Optimizing Technological Processes for Hardening Aluminum Alloys**



NEW TECHNOLOGIES IN MECHANICAL ENGINEERING | 11 January 2026 | Pages: S177 - S185

## **Analytical Determination of Microdimple Depth and Surface Deformation under Laser Shock Processing of Visco-Elasto-Plastic Materials**



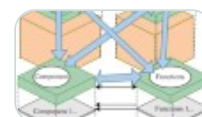
NEW TECHNOLOGIES IN MECHANICAL ENGINEERING | 11 January 2026 | Pages: S186 - S194

## **Continuous Fiber Reinforcement As Applied to Manufacturing Load-Bearing Frames for Products by Means of 5D Printing**



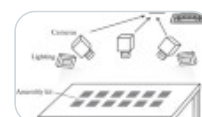
NEW TECHNOLOGIES IN MECHANICAL ENGINEERING | 11 January 2026 | Pages: S195 - S206

## **Prospects for Using Microservice Architecture to Solve the Problem of Developing a Flexible Automated System for a Machine-Building Enterprise**



AUTOMATION AND CONTROL IN ENGINEERING | 11 January 2026 | Pages: S207 - S218

## **Digital Technologies for Automation of Warehouse Accounting of Assembly Components**



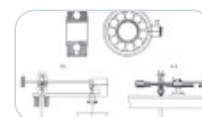
AUTOMATION AND CONTROL IN ENGINEERING | 11 January 2026 | Pages: S219 - S229

## **The Integrated Active Control System As a Means of Implementing “Smart” Production of Axial Solid Metal-Cutting Tools**



AUTOMATION AND CONTROL IN ENGINEERING | 11 January 2026 | Pages: S230 - S236

## **The Experimental Dependence “IMASH RAN-Ch.1” As a Fundamental Tribological Regularity Inherent in Single-Row Radial Rolling Bearings: Ball Bearings**



EXPERIMENTAL MECHANICS, DIAGNOSTICS, AND TESTING | 11 January 2026 | Pages: S237 - S254

## **Method for Machining Bevel Gears in Small-Series Production**



**EXPERIMENTAL MECHANICS, DIAGNOSTICS, AND TESTING** | 11 January 2026 | Pages: S255 - S261

---

## **Dependence of Cutting Temperature on Milling Modes of Polymer Noncomposite Materials for Shipbuilding**



**EXPERIMENTAL MECHANICS, DIAGNOSTICS, AND TESTING** | 11 January 2026 | Pages: S262 - S270

---

## **Effect of Compressive Thermomechanical Loading on High-Temperature Strength Characteristics of a Single-Crystal High-Temperature Nickel Alloy**



**EXPERIMENTAL MECHANICS, DIAGNOSTICS, AND TESTING** | 11 January 2026 | Pages: S271 - S277

---