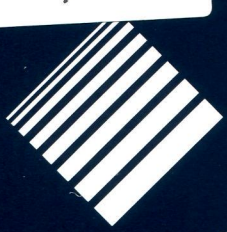
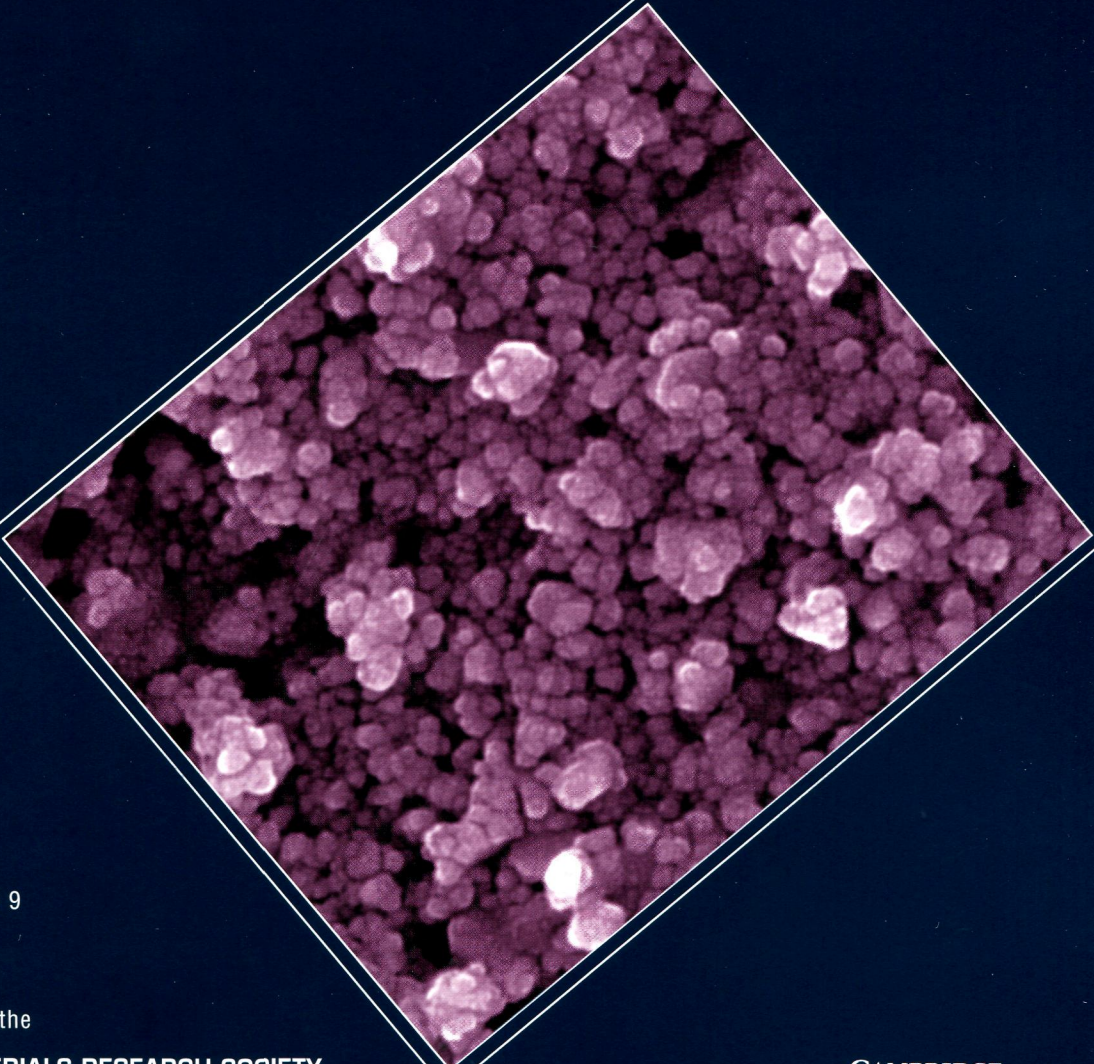


ITW
Y80/mrs



jmr

Journal of
MATERIALS RESEARCH



VOLUME 28 • NO 9
MAY 14, 2013

A publication of the

MRS MATERIALS RESEARCH SOCIETY
Advancing materials. Improving the quality of life.

CAMBRIDGE
UNIVERSITY PRESS

Journal of MATERIALS RESEARCH

Volume 28, Number 9, May 14, 2013

INVITED FEATURE PAPER

1139–1147 **Defects in amorphous phase-change materials**

Jennifer Luckas, Daniel Krebs,
Stephanie Grothe, Josef Klomfaß,
Reinhard Carius,
Christophe Longeaud,
Matthias Wuttig

ARTICLES

1148–1154 **Mechanical properties and anisotropy of AZ31 alloy sheet processed by flat extrusion container**

Qingshan Yang, Bin Jiang,
Jiahong Dai, Ruihong Li,
Fusheng Pan

1155–1164 **Development of the ReaxFF reactive force field for aluminum–molybdenum alloy**

Wen-Xiong Song, Shi-Jin Zhao

1165–1176 **Effect of initial grain sizes on the grain boundary network during grain boundary engineering in Alloy 690**

Tingguang Liu, Shuang Xia, Hui li,
Bangxin Zhou, Qin Bai, Cheng Su,
Zhigang Cai

1177–1188 **An improved long-term nanoindentation creep testing approach for studying the local deformation processes in nanocrystalline metals at room and elevated temperatures**

Verena Maier, Benoit Merle,
Mathias Göken, Karsten Durst

1189–1195 **Thermodynamic modeling and experimental study on the microstructure of laser clad Ni–base alloy coatings on 45 steel**

Yiwen Lei, Ronglu Sun, Ying Tang

1196–1202 **Secondary dendrite arm migration caused by temperature gradient zone melting in the directionally solidified Sn–40 at.% Mn peritectic alloy**

Peng Peng, Xinzhong Li,
Dongmei Liu, Yanqing Su,
Jingjie Guo, Hengzhi Fu

1203–1210 **Rapid solidification behavior of Cu–Co–Fe alloy**

Lei Zhao, Jiu Zhou Zhao

1211–1217 **Microstructural changes in grain interior and grain boundary by formation of metastable and stable phases related to age-hardening in an Au–Cu–Ag–Pd alloy**

Su-Yoen Cho, Gwang-Young Lee,
Ji-In Jeong, Yong Hoon Kwon,
Hyung-II Kim, Hyo-Joung Seol

1218–1223 **Correlation between structures and properties in $(\text{Zr}_{65}\text{Cu}_{15}\text{Ni}_{10}\text{Al}_{10})_{90}\text{Nb}_{10}$ alloys**

Ji Liang Zhang, Ying Min Wang,
Chan Hyung Shek

1224–1238 **A simple model of plate-like crystallization with constant plate thickness**

Beata Misztal-Faraj

1239–1244 **Epitaxial growth and interfaces of high-quality InN films grown on nitrided sapphire substrates**

Fangliang Gao, Yunfang Guan,
Jingling Li, Junning Gao,
Junqiu Guo, Guoqiang Li

1245–1253 **Structural characterization, optical and magnetic properties of Ni-doped CdO dilute magnetic semiconductor nanoparticles**

Tokeer Ahmad, Sarvari Khatoun,
Kelsey Coolahan,
Samuel E. Lofland

1254–1261 **Rapid low-pressure plasma sintering of inkjet-printed silver nanoparticles for RFID antennas**

Franziska M. Wolf, Jolke Perelaer,
Steffi Stumpf, Dirk Bollen,
Frank Kriebel, Ulrich S. Schubert

1262–1268 **The effect of the pore topology on the elastic modulus of organosilicate glasses**

Kong-Boon Yeap,
Malgorzata Kopycinska-Mueller,
Lei Chen, Yu Chen,
Marco Jungmann,
Reinhard Krause-Rehberg,
Sukesh Mahajan, Joost Vlassak,
Martin Gall, Ehrenfried Zschech

1269–1277 **Characterization of interface quality between various low-temperature oxides and Si using room-temperature-photoluminescence and Raman spectroscopy**

Shiu-Ko Jang Jian,
Chih-Cherng Jeng,
Ting-Chun Wang,
Chih-Mu Huang, Ying-Lang Wang