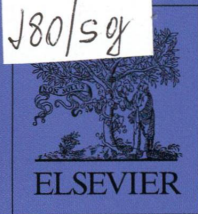


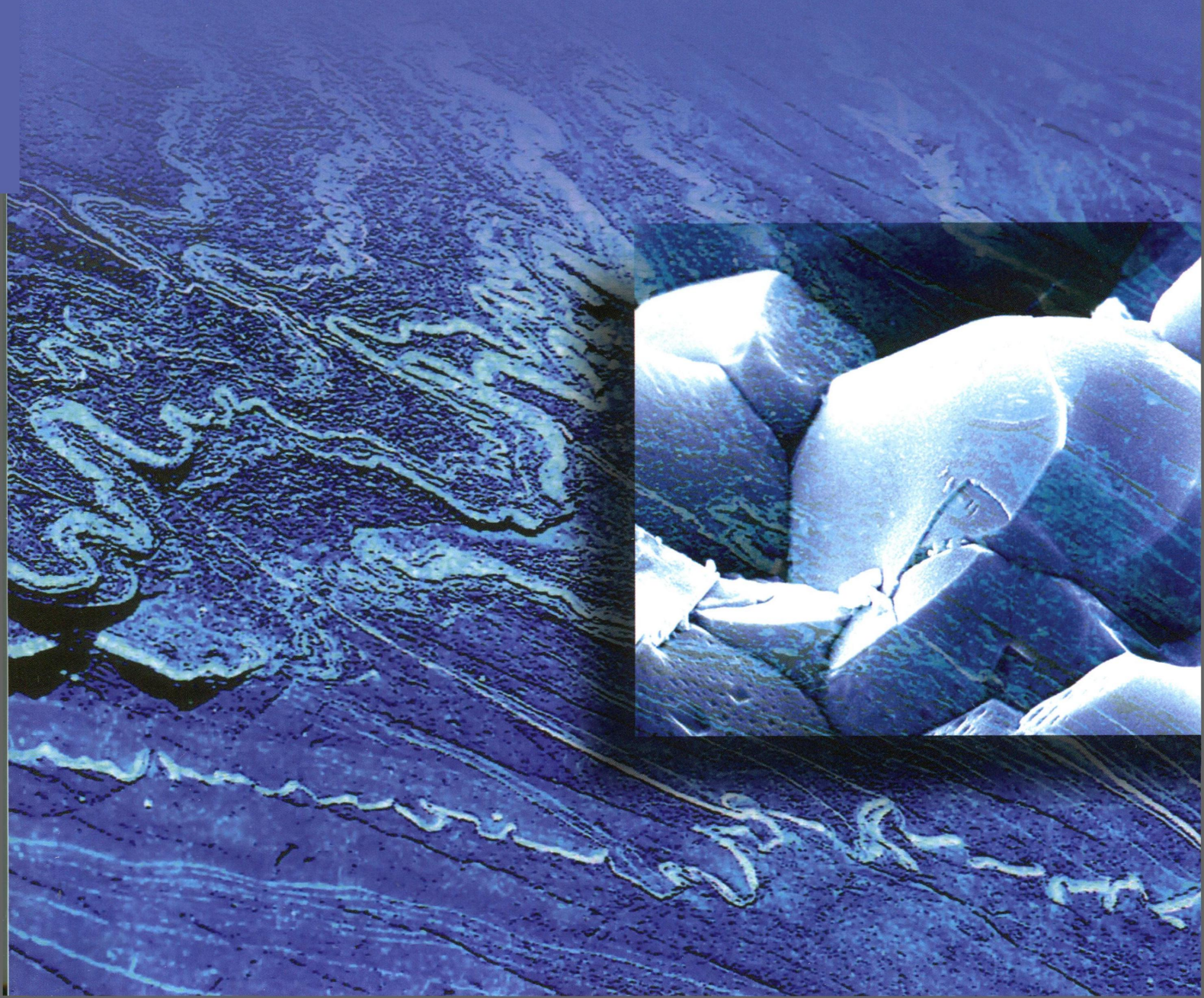
RU  
J80/s.g.



Volume 68, Part A, November 2014

ISSN 0191-8141

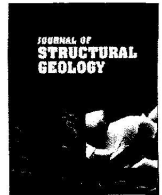
# JOURNAL OF STRUCTURAL GEOLOGY







# Volume 68, Part A, November 2014



## Contents

- Y. HAN, Y. WANG, G. ZHAO and Q. CAO 1 Syn-tectonic emplacement of the Late Mesozoic Laojunshan granite pluton in the eastern Qinling, central China: An integrated fabric and geochronologic study
- M. HAERTEL and M. HERWEGH 16 Microfabric memory of vein quartz for strain localization in detachment faults: A case study on the Simplon fault zone
- M. MOOKERJEE and S. PEEK 33 Evaluating the effectiveness of Flinn's  $k$ -value versus Lode's ratio
- W. S. DE RAADT, L. BURLINI, K. KUNZE and C. J. SPIERS 44 Effect of pre-existing crystallographic preferred orientation on the rheology of Carrara marble
- M. DABROWSKI and B. GRASEMANN 58 Domino boudinage under layer-parallel simple shear
- L. F. ZULUAGA, H. FOSSEN and A. ROTEVATN 66 Progressive evolution of deformation band populations during Laramide fault-propagation folding: Navajo Sandstone, San Rafael monocline, Utah, U.S.A.
- D. E. MOORE 82 Comparative mineral chemistry and textures of SAFOD fault gouge and damage-zone rocks
- J. ZULAUF, G. ZULAUF, J. GÖTTLICH and M. PEINL 97 Formation of chocolate-tablet boudins: Results from scaled analogue models
- S. VITALE 112 Finite strain estimation from deformed elliptical markers: The minimized  $\bar{R}_i$  (MIRi) iterative method
- A. N. HUGHES, N. P. BENESH and J. H. SHAW 121 Factors that control the development of fault-bend versus fault-propagation folds: Insights from mechanical models based on the discrete element method (DEM)
- M. REMPE, S. A. F. SMITH, F. FERRI, T. M. MITCHELL and G. DI TORO 142 Clast-cortex aggregates in experimental and natural calcite-bearing fault zones
- T. I. YILMAZ, G. PROSSER, D. LIOTTA, J. H. KRUHL and H. A. GILG 158 Repeated hydrothermal quartz crystallization and cataclasis in the Bavarian Pfahl shear zone (Germany)

*Contents continued on inside back cover*

Indexed/Abstracted in *Curr. Cont. ASCA, BIOSIS Data, Cam. Sci. Abstr., Chem. Abstr. Serv., Curr. Cont./Phy. Chem. & Earth Sci., Eng. Ind., Geo. Abstr., Geo. Bib & Indx, INSPEC Data, PASCAL-CNRS Data, Petrol. Abstr., Curr. Cont. Sci. Cit. Ind., Curr. Cont. SCISEARCH Data* Also covered in the abstract and citation database SCOPUS®. Full text available on ScienceDirect®



See the JOURNAL OF STRUCTURAL GEOLOGY  
on the World Wide Web  
<http://www.elsevier.com/locate/jsg>

*Contents continued from outside back cover*

- L. FEDERICO, L. CRISPINI, A. VIGO and G. CAPPONI 175 Unravelling polyphase brittle tectonics through multi-software fault-slip analysis: The case of the Voltri Unit, Western Alps (Italy)
- M. FRENZEL and N. H. WOODCOCK 194 Cockade breccia: Product of mineralisation along dilational faults
- S. E. LAUBACH, P. EICHHUBL, P. HARGROVE, M. A. ELLIS and J. N. HOOKER 207 Fault core and damage zone fracture attributes vary along strike owing to interaction of fracture growth, quartz accumulation, and differing sandstone composition
- A. LIN, G. RAO and B. YAN 227 Structural analysis of the right-lateral strike-slip Qingchuan fault, northeastern segment of the Longmen Shan thrust belt, central China