



7 articles in this issue

**The Conditions of Formation for Epithermal Ag–Au Mineralization at the Televeem Volcano Dome Rise, Central Chukchi Region**



OriginalPaper | 29 December 2025 | Pages: 509 - 518

**An Ecological and Geochemical Characterization of Water Extracts from Ashes of Shiveluch Volcano (the Eruption of April 11–13, 2023)**



OriginalPaper | 29 December 2025 | Pages: 519 - 534

**The Eastern Branch of Icelandic Rifts: Morphology and Tectonics**



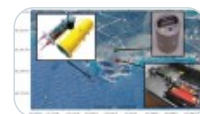
OriginalPaper | 29 December 2025 | Pages: 535 - 554

**Quantitative Estimation of How Variations in Near-Bottom Pressure Are Transformed into Microseismic Oscillations of Upper Crust in the Frequency Range of Wind Waves**



OriginalPaper | 29 December 2025 | Pages: 555 - 563

**Microseismic Motion As Affected by a Typhoon**



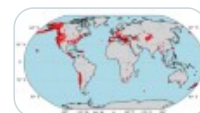
OriginalPaper | 29 December 2025 | Pages: 564 - 571

**On the Genesis of Damage to the Early Islamic Monuments of the Bukhara Architecture: the Samanid Mausoleum and the Magoki-Attori Mosque**



OriginalPaper | 29 December 2025 | Pages: 572 - 585

**RSNet: A Neural Network Model for Picking of Seismic Wave Arrival Times Based on Mesofluctuations**



OriginalPaper | 29 December 2025 | Pages: 586 - 597