



# MATERIALS SCIENCE & ENGINEERING

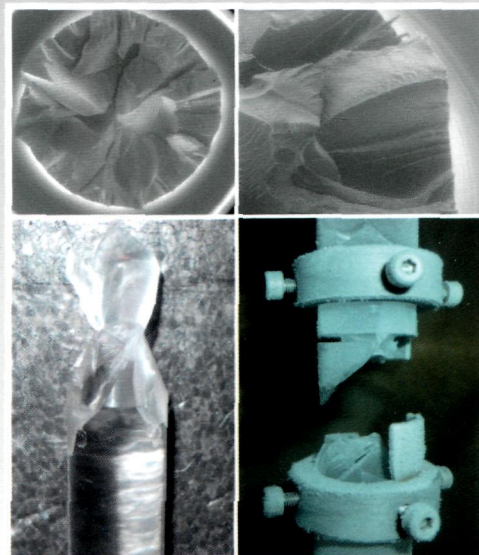
**R**

## Reports: A Review Journal

Recent developments in brittle and quasi-brittle failure assessment of engineering materials by means of local approaches

F. Berto, P. Lazzarin

Editor-in-Chief:  
Franky So



# Recent developments in brittle and quasi-brittle failure assessment of engineering materials by means of local approaches

F. Berto\*, P. Lazzarin

University of Padua, Department of Management and Engineering, Stradella San Nicola 3, 36100 Vicenza, Italy

## Contents

1. Introduction .....	3
2. Brittle fracture of engineering materials .....	5
3. Review of some local approaches for the failure assessment of brittle and quasi-brittle materials .....	7
3.1. Generalized maximum tangential stress criterion .....	7
3.2. Sih's criterion .....	8
3.3. Generalized notch stress intensity factors for mode I and mode II loading conditions .....	9
3.3.1. Stress distributions due to U- and V-notches .....	9
3.3.2. Application of the NSIFs to brittle materials under mode I loading .....	12
3.3.3. Notch stress intensity factors for mode II loading .....	12
3.4. Neuber's fictitious notch rounding (FNR) approach .....	12
4. Theoretical background of the volume-based SED approach .....	15
4.1. Strain energy density for sharp V-notches under mode I loading .....	15
4.2. Strain energy density for sharp V-notches under mixed mode loading .....	16
4.3. Blunt V-notches under mode I loading .....	17
4.4. Strain energy density for blunt notches under mixed mode loading .....	19
4.5. Strain energy density for blunt notches under torsion loading (mode III) .....	21
4.6. Some advantages of the SED .....	21
4.7. Non-singular higher order terms and three-dimensional problems near notches .....	23
4.7.1. Higher order terms .....	23
4.7.2. Three-dimensional problems near notches .....	23
5. Applications of SED to different materials under mode I-III loadings .....	25
5.1. Brittle failure of ceramic materials under mode I loading .....	26
5.2. Data from polymethyl-methacrylate (PMMA) under different mode loadings .....	26
5.2.1. Brittle failure data from U- and V-shaped notches in mode I (PMMA at -60 °C) .....	26
5.2.2. Brittle failure data from U-shaped notches in mixed mode (PMMA at -60 °C) .....	26
5.2.3. Brittle failure data from U- and V-shaped notches under torsion at room and low temperature (PMMA at -60 °C) .....	27

\* Corresponding author.

E-mail address: berto@gest.unipd.it (F. Berto).

---

5.3. Brittle failure of graphite: recent results .....	29
5.3.1. Mixed mode failure .....	31
5.3.2. Torsion loading .....	32
5.3.3. Compression loading .....	33
5.3.4. Final synthesis from all graphite specimens .....	39
6. Application of the SED approach to the fatigue assessment of steel welded joints.....	39
7. Application of the SED approach to the fatigue assessment of V-notches .....	41
7.1. Data from notched specimens made of C40 steel (normalized state).....	41
7.2. Data from notched specimens made of 39NiCrMo3 steel (hardened and tempered state).....	42
7.3. Multiaxial fatigue data from notched specimens made of AISI 416 steel .....	42
8. Summary and conclusions .....	43
Appendix A.....	44
References .....	45