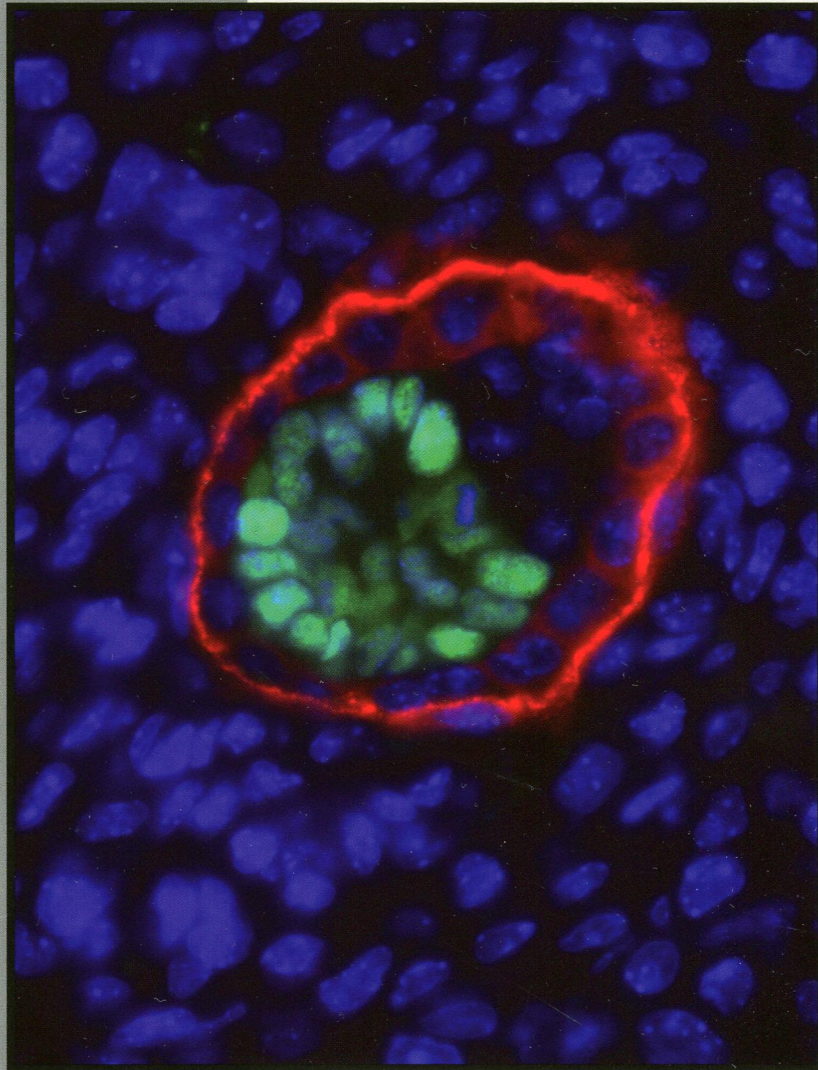


RU  
M7g/c



Published Twice Monthly  
February 2014, Volume 34, Number 3



AMERICAN  
SOCIETY FOR  
MICROBIOLOGY

# MICB

Molecular and Cellular Biology

## TABLE OF CONTENTS

### SPOTLIGHT

Articles of Significant Interest Selected from This Issue by the Editors	299
--	-----

### COMMENTARY

FACT and the H2B N Tail	Mary Ann Osley	300–302
-------------------------	----------------	---------

### ARTICLES

A Highly Conserved Region within H2B Is Important for FACT To Act on Nucleosomes	Suting Zheng, J. Brooks Crickard, Abhinaya Srikanth, Joseph C. Reese	303–314
p300-Dependent Acetylation of Activating Transcription Factor 5 Enhances C/EBP $\beta$ Transactivation of C/EBP $\alpha$ during 3T3-L1 Differentiation	Yue Zhao, Ya-Dong Zhang, You-You Zhang, Shu-Wen Qian, Zhi-Chun Zhang, Shu-Fen Li, Liang Guo, Yuan Liu, Bo Wen, Qun-Ying Lei, Qi-Qun Tang, Xi Li	315–324
Role of Ca <sup>2+</sup> /Calmodulin-Dependent Kinase II–IRAK1 Interaction in LMP1-Induced NF- $\kappa$ B Activation	Jung-Eun Kim, Sang Yong Kim, Sue Yeon Lim, Elliott Kieff, Yoon-Jae Song	325–334
The p97-UFD1L-NPL4 Protein Complex Mediates Cytokine-Induced I $\kappa$ B $\alpha$ Proteolysis	Ju-Mei Li, Hongyu Wu, Wenzheng Zhang, Michael R. Blackburn, Jianping Jin	335–347
Grb2 Promotes Integrin-Induced Focal Adhesion Kinase (FAK) Autophosphorylation and Directs the Phosphorylation of Protein Tyrosine Phosphatase $\alpha$ by the Src-FAK Kinase Complex	Suzanne Y. S. Cheng, Guobin Sun, David D. Schlaepfer, Catherine J. Pallen	348–361
Structure of an SspH1-PKN1 Complex Reveals the Basis for Host Substrate Recognition and Mechanism of Activation for a Bacterial E3 Ubiquitin Ligase	Alexander F. A. Keszei, Xiaojing Tang, Craig McCormick, Elton Zeqiraj, John R. Rohde, Mike Tyers, Frank Sicheri	362–373
Regulation of Ras Localization and Cell Transformation by Evolutionarily Conserved Palmitoyltransferases	Evelin Young, Ze-Yi Zheng, Angela D. Wilkins, Hee-Tae Jeong, Min Li, Olivier Lichtarge, Eric C. Chang	374–385
p53 Tumor Suppressor Protein Stability and Transcriptional Activity Are Targeted by Kaposi's Sarcoma-Associated Herpesvirus-Encoded Viral Interferon Regulatory Factor 3	Petra Baresova, Jana Musilova, Paula M. Pitha, Barbora Lubyova	386–399
Interferon Regulatory Factor 8 Modulates Phenotypic Switching of Smooth Muscle Cells by Regulating the Activity of Myocardin	Shu-Min Zhang, Lu Gao, Xiao-Fei Zhang, Ran Zhang, Li-Hua Zhu, Pi-Xiao Wang, Song Tian, Da Yang, Ke Chen, Ling Huang, Xiao-Dong Zhang, Hongliang Li	400–414
Regulation of NO Synthesis, Local Inflammation, and Innate Immunity to Pathogens by BET Family Proteins	Sebastian Wienerroither, Isabella Rauch, Felix Rosebrock, Amanda M. Jamieson, James Bradner, Matthias Muhar, Johannes Zuber, Mathias Müller, Thomas Decker	415–427
GCN2-Dependent Metabolic Stress Is Essential for Endotoxemic Cytokine Induction and Pathology	Haiyun Liu, Lei Huang, Jillian Bradley, Kebin Liu, Kankana Bardhan, David Ron, Andrew L. Mellor, David H. Munn, Tracy L. McGaha	428–438

<b>Mitotic Phosphorylation of Eukaryotic Initiation Factor 4G1 (eIF4G1) at Ser1232 by Cdk1:Cyclin B Inhibits eIF4A Helicase Complex Binding with RNA</b>	Mikhail I. Dobrikov, Mayya Shveygert, Michael C. Brown, Matthias Gromeier	439–451
<b>Psy2 Targets the PP4 Family Phosphatase Pph3 To Dephosphorylate Mth1 and Repress Glucose Transporter Gene Expression</b>	Hui Ma, Bong-Kwan Han, Marisela Guaderrama, Aaron Aslanian, John R. Yates III, Tony Hunter, Curt Wittenberg	452–463
<b>Mammary-Specific Gene Activation Is Defined by Progressive Recruitment of STAT5 during Pregnancy and the Establishment of H3K4me3 Marks</b>	Keunsoo Kang, Daisuke Yamaji, Kyung Hyun Yoo, Gertraud W. Robinson, Lothar Hennighausen	464–473
<b><i>In Vivo</i> Interaction Proteomics Reveal a Novel p38 Mitogen-Activated Protein Kinase/Rack1 Pathway Regulating Proteostasis in <i>Drosophila</i> Muscle</b>	Vladimir E. Belozarov, Srdjana Ratkovic, Helen McNeill, Arthur J. Hilliker, John C. McDermott	474–484
<b>Cholesterol Sulfate and Cholesterol Sulfotransferase Inhibit Gluconeogenesis by Targeting Hepatocyte Nuclear Factor 4<math>\alpha</math></b>	Xiongjie Shi, Qiuqiong Cheng, Leyuan Xu, Jiong Yan, Mengxi Jiang, Jinhan He, Meishu Xu, Maja Stefanovic-Racic, Ian Sipula, Robert Martin O'Doherty, Shunlin Ren, Wen Xie	485–497
<b>Ethanol-Induced Upregulation of 10-Formyltetrahydrofolate Dehydrogenase Helps Relieve Ethanol-Induced Oxidative Stress</b>	Tsun-Hsien Hsiao, Chia-Jen Lin, Yi-Shao Chung, Gang-Hui Lee, Tseng-Ting Kao, Wen-Ni Chang, Bing-Hung Chen, Jan-Jong Hung, Tzu-Fun Fu	498–509
<b>S6K1 Negatively Regulates TAK1 Activity in the Toll-Like Receptor Signaling Pathway</b>	So Yong Kim, Kyung-Hwa Baik, Kwan-Hyuck Baek, Kyong-Hwa Chah, Kyung Ah Kim, Gyuyoung Moon, Eunyu Jung, Seong-Tae Kim, Jae-Hyuck Shim, Matthew B. Greenblatt, Eunyong Chun, Ki-Young Lee	510–521
<b>Transcription Factor Ets1, but Not the Closely Related Factor Ets2, Inhibits Antibody-Secreting Cell Differentiation</b>	Shinu John, Lisa Russell, Shu Shien Chin, Wei Luo, Robert Oshima, Lee Ann Garrett-Sinha	522–532
<b>A p21-ZEB1 Complex Inhibits Epithelial-Mesenchymal Transition through the MicroRNA 183-96-182 Cluster</b>	Xiao Ling Li, Toshifumi Hara, Youngeun Choi, Murugan Subramanian, Princy Francis, Sven Bilke, Robert L. Walker, Marbin Pineda, Yuelin Zhu, Yuan Yang, Ji Luo, Lalage M. Wakefield, Thomas Brabletz, Ben Ho Park, Sudha Sharma, Dipanjan Chowdhury, Paul S. Meltzer, Ashish Lal	533–550
<b>Mapping the Protein Interaction Network for TFIIB-Related Factor Brf1 in the RNA Polymerase III Preinitiation Complex</b>	Seok-Kooi Khoo, Chih-Chien Wu, Yu-Chun Lin, Jin-Cheng Lee, Hung-Ta Chen	551–559
<b>The Primitive Endoderm Segregates from the Epiblast in <math>\beta</math>1 Integrin-Deficient Early Mouse Embryos</b>	Robert Moore, Wensi Tao, Elizabeth R. Smith, Xiang-Xi Xu	560–572

*Cover photograph* (Copyright © 2014, American Society for Microbiology. All rights reserved.) Representative image of an implanted early mouse embryo (embryonic day 5.5) stained for Dab2 (red) and Oct3/4 (green) and counterstained with DAPI (4',6-diamidino-2-phenylindole; blue). The primitive endoderm cells (marked by Dab2 staining) form a monolayer epithelium surrounding the epiblast (marked by Oct3/4 staining). (See related article on p. 560.)