

# nature immunology

## MEETING REPORT

- 101 Understanding the microbiota in the midst of Renaissance architecture and olive groves**  
Francisco Guarner, Lora V Hooper & Gabriel Núñez

## COMMENTARY

- 106 Personalizing medicine for autoimmune and inflammatory diseases**  
Andrew C Chan & Timothy W Behrens

## NEWS AND VIEWS

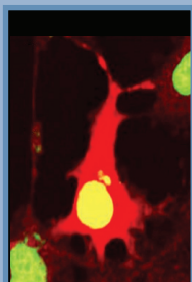
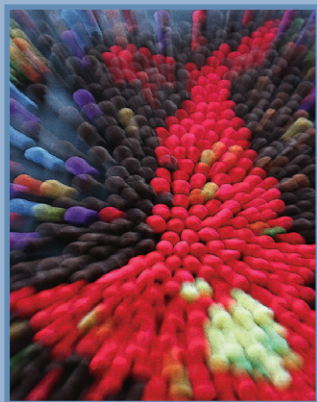
- 110 A complement a day keeps the Fox(p3) away**  
Gaëlle Le Friec, Jörg Köhl & Claudia Kemper  *see also p 162*
- 112 Too much of a good thing**  
Atsushi Onodera, Damon John Tumes & Toshinori Nakayama  *see also p 143*
- 114 Paneth cells: targets of friendly fire**  
Stephen J McSorley & Charles L Bevins  *see also p 136*
- 116 Noncanonical NFATc1 activation in DN thymocytes**  
Fernando Macian  *see also p 127*
- 118 RESEARCH HIGHLIGHTS**

## REVIEW

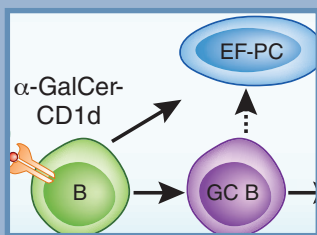
- 119 Innate B cell helpers reveal novel types of antibody responses**  
Carola G Vinuesa & Pheh Ping Chang

## ARTICLES

- 127 An alternative NFAT-activation pathway mediated by IL-7 is critical for early thymocyte development**  
Amiya K Patra, Andris Avots, René P Zahedi, Thomas Schüler, Albert Sickmann, Ursula Bommhardt & Edgar Serfling  *see also p 116*
- 136 Parasite-induced T<sub>H</sub>1 cells and intestinal dysbiosis cooperate in IFN- $\gamma$ -dependent elimination of Paneth cells**  
Megan Raetz, Sun-hee Hwang, Cara L Wilhelm, Donna Kirkland, Alicia Benson, Carolyn R Sturge, Julie Mirpuri, Shipra Vaishnava, Baidong Hou, Anthony L DeFranco, Christopher J Gilpin, Lora V Hooper & Felix Yarovinsky  *see also p 114*



Nuclear translocation of NFAT proteins is necessary for gene expression. Serfling and colleagues (p127; News and Views by Macian, p116) show that in pre-TCR-negative thymocytes, IL-7-Jak3-mediated signals result in nuclear localization of NFATc1. The original image by Amiya K. Patra shows nuclear NFATc2 (yellow, a merge of red (NFATc2) and green (DAPI)) in COS-7 cells transfected with a vector expressing NFATc2. Artwork by Lewis Long.

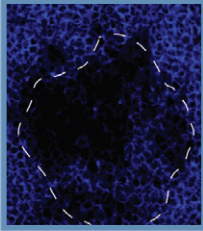


Innate B cell helpers (p 119)

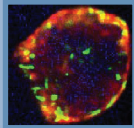
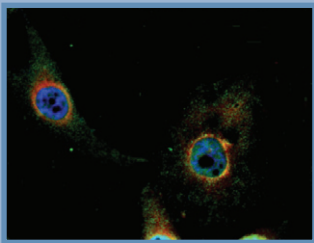


nature publishing group



*Nature Immunology* (ISSN 1529-2908) is published monthly by Nature Publishing Group, a trading name of Nature America Inc. located at 75 Varick Street, Fl 9, New York, NY 10013-1917. Periodicals postage paid at New York, NY and additional mailing post offices. **Editorial Office:** 75 Varick Street, Fl 9, New York, NY 10013-1917. Tel: (212) 726 9207, Fax: (212) 696 9752. **Annual subscription rates:** USA/Canada: US\$225 (personal), US\$4,677 (institution). Canada add 5% GST #140911595r001; Euro-zone: € 287 (personal), € 3,713 (institution); Rest of world (excluding China, Japan, Korea): £185 (personal), £2,400 (institution); Japan: Contact NPG Nature Asia-Pacific, Chiyoda Building, 2-37 Ichigayatamachi, Shinjuku-ku, Tokyo 162-0843. Tel: 81 (03) 3267 8751, Fax: 81 (03) 3267 8746. **POSTMASTER:** Send address changes to *Nature Immunology*, Subscriptions Department, 75 Varick Street, 9th Floor, New York, NY 10013-1917. **Authorization to photocopy** material for internal or personal use, or internal or personal use of specific clients, is granted by Nature Publishing Group to libraries and others registered with the Copyright Clearance Center (CCC) Transactional Reporting Service, provided the relevant copyright fee is paid direct to CCC, 222 Rosewood Drive, Danvers, MA 01923, USA. Identification code for *Nature Immunology*: 1529-2908/04. **Back issues:** US\$45, Canada add 7% for GST. CPC PUB AGREEMENT #40032744. Printed on acid-free paper by The Sheridan Press, Hanover, PA, USA. Copyright © 2013 Nature Publishing Group. Printed in USA.



Follicular regulatory T cells (p 152)

The negative regulator TRIM21  
(p 172)

Identifying innate genes (p 179)

- 143 IL-7 signaling must be intermittent, not continuous, during CD8<sup>+</sup> T cell homeostasis to promote cell survival instead of cell death**  
Motoko Y Kimura, Leonid A Pobeziński, Terry I Guintier, Julien Thomas, Anthony Adams, Jung-Hyun Park, Xuguang Tai & Alfred Singer  *see also p 112*
- 152 The receptor PD-1 controls follicular regulatory T cells in the lymph nodes and blood**  
Peter T Sage, Loise M Francisco, Christopher V Carman & Arlene H Sharpe
- 162 Absence of signaling into CD4<sup>+</sup> cells via C3aR and C5aR enables autoinductive TGF- $\beta$ 1 signaling and induction of Foxp3<sup>+</sup> regulatory T cells**  
Michael G Strainic, Ethan M Shevach, Fengqi An, Feng Lin & M Edward Medof  *see also p 110*
- 172 The E3 ubiquitin ligase TRIM21 negatively regulates the innate immune response to intracellular double-stranded DNA**  
Zhiqiang Zhang, Musheng Bao, Ning Lu, Leiyun Weng, Bin Yuan & Yong-Jun Liu

---

## RESOURCE

- 179 Identification of regulators of the innate immune response to cytosolic DNA and retroviral infection by an integrative approach**  
Mark N Lee, Matthew Roy, Shao-En Ong, Philipp Mertins, Alexandra-Chloé Villani, Weibo Li, Farokh Dotiwala, Jayita Sen, John G Doench, Megan H Orzalli, Igor Kramnik, David M Knipe, Judy Lieberman, Steven A Carr & Nir Hacohen

---

## NATURE IMMUNOLOGY CLASSIFIED

See back pages.