

RU  
N28/e

OUTLOOK  
Obesity

# nature

THE INTERNATIONAL WEEKLY JOURNAL OF SCIENCE



## Out of the shadows

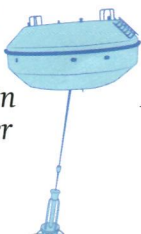
*Six centuries of solar eclipse art* **PAGE 314**

### RENEWABLE ENERGY

#### THE TIDE IS TURNING

*Heightened interest in tidal and wave power*

**PAGE 302**



### BIOCHEMISTRY

#### ALLOSTERY RESHAPED

*An update for the classic regulatory mechanism*

**PAGE 331**

### MATERIALS

#### MAKING MORE OF WASTE HEAT

*Tin selenide crystals raise the stakes for thermoelectricity*

**PAGES 327 & 373**

**NATURE.COM/NATURE**

17 April 2014 £10

Vol. 508, No. 7496



# CONTENTS

17 April 2014 / Vol 508 / Issue No 7496

## THIS WEEK

### EDITORIALS

#### 287 POLICY

##### The democracy carousel

Europe's re-examination of stem-cell rules is a waste of time and money

#### 287 GENOMICS

##### Cancer crossroads

Understanding the genetics of cancer should be a major research focus

#### 288 EDUCATION

##### Practical nonsense

The UK government's plan to remove practical work from exams is misguided

### WORLD VIEW

#### 289 Beware of backroom deals in the name of 'science'

Colin Macilwain

What big business calls 'sound science' can be unsound and unscientific

### RESEARCH HIGHLIGHTS

#### 290 SELECTIONS FROM THE SCIENTIFIC LITERATURE

Life with the lions / Bird conservation league table / Sunken-tree ecosystems / Lionfish rule the reef / Unreliable antiprion activity / Nimble fruit flies

### SEVEN DAYS

#### 292 THE NEWS IN BRIEF

Japan returns to nuclear power / Schaven ends fight over PhD / UK policy acting as immigration barrier / LHC spots exotic Z particle

## CAREERS

#### 421 ACADEMIC PROGRESSION

##### Tactical tenure manoeuvres

Tenure is still a major career goal, but careers go on without it

#### 423 TURNING POINT

Dallas-based neurologist Joel Elmquist knows a thing or two about mentoring — and being mentored

## NEWS IN FOCUS



### PUBLIC HEALTH

## Drug divide

Poorer nations left wanting over costly treatments for hepatitis C **PAGE 295**

#### 296 EPIGENETICS

Sperm smuggles stress across the generation gap

#### 297 ASTRONOMY

Panel picks over pros and cons of proposed sites for  $\gamma$ -ray telescope array

#### 298 CLIMATE CHANGE

IPCC report draws criticism for lack of practical guidance

#### 299 REPRODUCIBILITY

Stem-cell scientist comes out fighting over 'stress' paper

#### 300 SPACE

Mini satellites — the small space hardware with big potential

## FEATURES



#### 302 POWER FROM THE OCEANS

##### Blue energy

The tide is turning for marine power

#### 306 TOXICOLOGY

##### The plastics puzzle

Alternatives to the problem additive bisphenol A may not be a fix

## COMMENT

#### 309 POLICY

##### Bring sustainable energy to the developing world

Reid Detchon & Richenda Van Leeuwen

It is time to invest in affordable, clean energy technologies

#### 312 PUBLISHING

##### Credit where credit is due

Liz Allen, Amy Brand, Jo Scott, Micah Altman & Marjorie Hlava

Manuscript-submission software tells us who did what in multi-author papers

## BOOKS & ARTS



### ASTRONOMY

## Art of the eclipse

Jay M Pasachoff and Roberta J M Olson explore visual interpretations of this solar phenomenon **PAGE 314**

#### 316 GEOLOGY

##### Parsing eruptions

Ted Nield

#### 317 ANIMAL BEHAVIOUR

##### Nomads of necessity

Joel Greenberg

#### 318 BOOKS IN BRIEF

## CORRESPONDENCE

319 China's renewables / A cap on false positives / Vanadium batteries / Mouse gene data / Do the experiments

## FUTURES

#### 426 The vermilion market

Preston Grassmann

SOLAR ECLIPSE: 1932 BY HOWARD RUSSELL BUTLER (1866-1934); PRINCETON UNIVERSITY ART MUSEUM/ART RESOURCE NY/SCALA, FLORENCE

# CONTENTS

17 April 2014 / Vol 508 / Issue No 7496

## RESEARCH

### NEW ONLINE

321 Papers published this week at nature.com

### NEWS & VIEWS

#### 322 EVOLUTIONARY BIOLOGY

##### Dating chimpanzees

Genetic tracing reveals remarkable stability in chimpanzee communities  
*Michael Haslam*

#### 323 GENETICS

##### Up and down in Down's syndrome

Trisomy 21 causes a genome-wide flattening of gene expression  
*Benjamin D Pope & David M Gilbert*  
[SEE LETTER P.345](#)

#### 324 ORGANIC CHEMISTRY

##### Catalysis marches on

A method for preparing isolated quaternary stereocentres  
*James P Morken* [SEE ARTICLE P.340](#)

#### 326 SYNTHETIC BIOLOGY

##### Biocircuits in synchrony

Synchronization of two synthetic circuits in a bacterial-cell population  
*Ricard Solé & Javier Macía*  
[SEE LETTER P.387](#)

#### 327 THERMOELECTRICITY

##### The ugly duckling

A high thermoelectric efficiency for single crystals of tin selenide  
*Joseph P Heremans* [SEE LETTER P.373](#)

#### 328 CELL BIOLOGY

##### The stressful influence of microbes

Changing metabolite levels drive the mitochondrial stress response  
*Suzanne Wolff & Andrew Dillin*  
[SEE LETTER P.406](#)

### REVIEW

#### 331 BIOCHEMISTRY The ensemble nature of allostery

*H N Motlagh, J O Wrabl, J Li & V J Hilser*

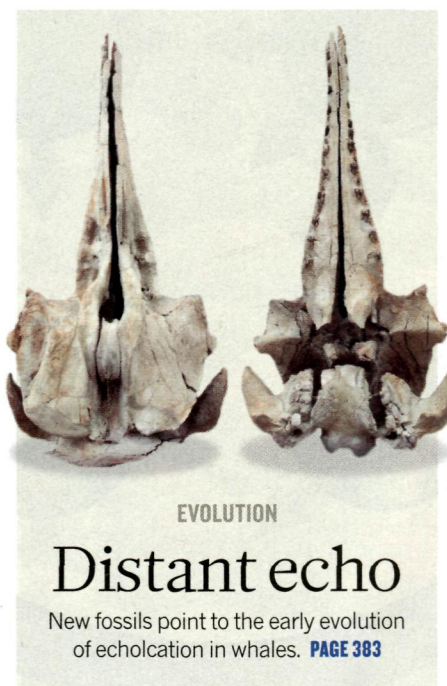
### ARTICLES

#### 340 ORGANIC CHEMISTRY Enantioselective construction of remote quaternary stereocentres

*T-S Mei, H H Patel & M S Sigman*  
[SEE N&V P.324](#)

#### 345 GENETICS Domains of genome-wide gene expression dysregulation in Down's syndrome

*A Letourneau et al.* [SEE N&V P.323](#)



#### 351 NEUROSCIENCE Brainstem nucleus MdV mediates skilled forelimb motor tasks

*M S Esposito, P Capelli & S Arber*

#### 357 NEUROSCIENCE Skilled reaching relies on a V2a propriospinal internal copy circuit

*E Azim, J Jiang, B Alstermark & T M Jessell*

### LETTERS

#### 364 GEOCHEMISTRY Isotopic links between atmospheric chemistry and the deep sulphur cycle on Mars

*H B Franz et al.*

#### 369 PHYSICS Coherent suppression of electromagnetic dissipation due to superconducting quasiparticles

*I M Pop et al.*

#### 373 THERMOELECTRICITY Ultralow thermal conductivity and high thermoelectric figure of merit in SnSe crystals

*L-D Zhao et al.* [SEE N&V P.327](#)

#### 378 CLIMATE SCIENCE Mid-latitude interhemispheric hydrologic seesaw over the past 550,000 years

*K-n Jo et al.*

#### 383 EVOLUTION A new fossil species supports an early origin for toothed whale echolocation

*J H Geisler, M W Colbert & J L Carew*

#### 387 SYSTEMS BIOLOGY Rapid and tunable post-translational coupling of genetic circuits

*A Prindle et al.* [SEE N&V P.326](#)

#### 392 MORPHOGENESIS Apical constriction drives tissue-scale hydrodynamic flow to mediate cell elongation

*B He, K Doubrovinski, O Polyakov & E Wieschaus*

#### 397 IMMUNOLOGY A committed precursor to innate lymphoid cells

*M G Constantinides, B D McDonald, P A Verhoef & A Bendelac*

#### 402 VIROLOGY Protection against filovirus diseases by a novel broad-spectrum nucleoside analogue BCX4430

*T K Warren et al.*

#### 406 CELL BIOLOGY *Caenorhabditis elegans* pathways that surveil and defend mitochondria

*Y Liu, B S Samuël, P C Breen & G Ruvkun* [SEE N&V P.328](#)

#### 411 PLANT SCIENCE miRNAs trigger widespread epigenetically activated siRNAs from transposons in *Arabidopsis*

*K M Creasey et al.*

#### 416 STRUCTURAL BIOLOGY Structural basis for translocation by AddAB helicase-nuclease and its arrest at $\chi$ sites

*W W Krajewski et al.*

#### 420 CORRIGENDUM Ptpn11 deletion in a novel progenitor causes metachondromatosis by inducing hedgehog signalling

*W Yang et al.*

#### 420 CORRIGENDUM Identification of pre-leukaemic haematopoietic stem cells in acute leukaemia

*L I Shlush et al.*

#### 420 CORRIGENDUM Regulatory evolution through divergence of a phosphoswitch in the transcription factor CEBPB

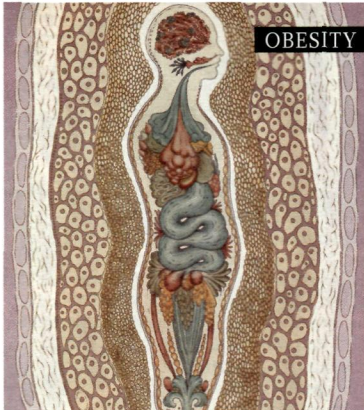
*V J Lynch, G May & G P Wagner*

# OUTLOOK

Supplement to 17 April 2014 / Vol 508 / Issue No 7496

## OBESITY

### natureOUTLOOK



OBESITY

Produced with support from:  
MRC  
NIHR

A growing  
problem

Turn to page 320

#### S49 EDITORIAL

##### Obesity

Tony Scully

#### S50 PUBLIC HEALTH

##### Society at large

Charting the rise and rise  
of worldwide obesity

#### S52 CELL PHYSIOLOGY

##### The changing colour of fat

Beige is the new brown

#### S54 TREATMENT

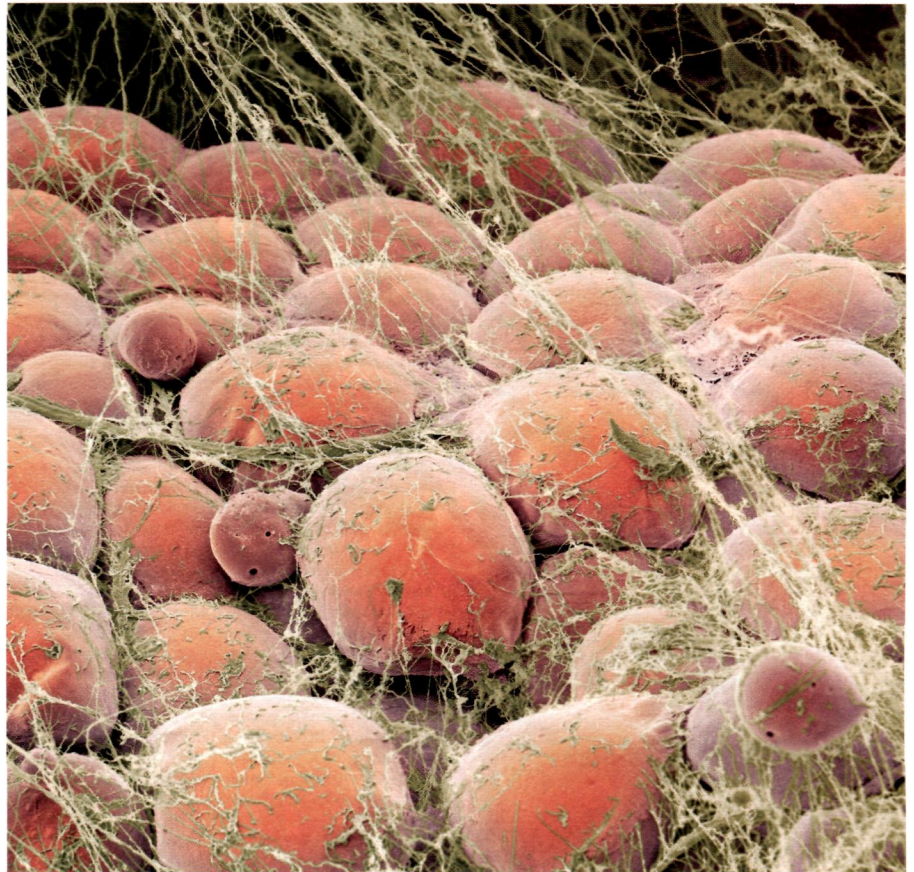
##### Marginal gains

What can you do to keep the  
weight off?

#### S57 PERSPECTIVE

##### Obesity is not a disease

D. L. Katz argues that popping  
pills isn't the answer



Could brown fat cells be involved in controlling human body weight? (see page S52).

#### S58 HERITABILITY

##### The family roots of obesity

Parents pass on epigenetic changes  
to their children and grandchildren

#### S61 MICROBIOME

##### A complicated relationship status

The 1,000 or so species of bacteria  
that inhabit the human gut have a key  
role in regulating body weight

#### S64 NEUROSCIENCE

##### Dissecting appetite

Mapping the neural circuits that  
control our hunger

#### S66 PERSPECTIVE

##### The tricks of the trade

Processed food can fool the appetite,  
say Stephen J. Simpson and  
David Raubenheimer



**MORE  
ONLINE**

#### NATURE.COM

- Examining links between antibiotic intake and body mass:  
[go.nature.com/2grybu](http://go.nature.com/2grybu)
- Preventing obesity in disadvantaged populations:  
[go.nature.com/jkejdg](http://go.nature.com/jkejdg)

#### COLLECTION

- Visit our online edition, which contains all the supplement features as well as an exclusive selection of research articles on obesity:  
[go.nature.com/jugm4q](http://go.nature.com/jugm4q)