

ПВ  
N 28/e

# nature

THE INTERNATIONAL WEEKLY JOURNAL OF SCIENCE

## INSIDE JUPITER

THE GIANT PLANET'S INTERIOR REPLICATED AT THE  
US NATIONAL IGNITION FACILITY

PAGES 294 & 330

GRAVITY

### SHOW OF FORCE

LIGO researchers edge  
closer to wave detection

PAGE 278

EPIDEMIOLOGY

### POLIO'S LAST REDOUBT

Vaccinating travellers in  
Pakistan won't work

PAGE 285

SOLAR-SYSTEM HISTORY

### DAWN IN THE ASTEROID BELT

NASA probe's view of  
planetesimal 4 Vesta

PAGE 303

NATURE.COM/NATURE

17 July 2014 £10

Vol. 511, No. 7509



# CONTENTS

17 July 2014 / Vol 511 / Issue No 7509

## THIS WEEK

### EDITORIALS

#### 263 FUNDING

##### Struggle for independence

The Scripps Institute is taking an alternative route to financial planning

#### 263 INFECTIOUS DISEASE

##### Within reach

One last concerted push could finally eradicate polio

#### 264 AGRICULTURE

##### Food for thought

Is a taste for organic farming a good thing?

### WORLD VIEW

#### 265 Misjudgements will drive social trials underground

Michelle Meyer

Facebook study was justifiable and scientifically useful

### RESEARCH HIGHLIGHTS

#### 266 SELECTIONS FROM THE SCIENTIFIC LITERATURE

'Dead Sea' on Titan / Blood tumour cells isolated / Ocean-reserve reefs at risk / Wheat vulnerable to warming / Open peer review raises Twitter ire / A component for Internet of things



### SEVEN DAYS

#### 268 THE NEWS IN BRIEF

Smallpox found in US lab / HIV returns to 'Mississippi baby' / Russia test fires Angara rocket / Dark-matter projects get green light

## CAREERS

#### 371 INTERDISCIPLINARY RESEARCH

##### Break out

Impressive advances are being made in cross-discipline research — is there a career path to match?

#### 373 TURNING POINT

Global agriculture and all life on Earth are all in a day's work for computational ecologist Drew Purves

## NEWS IN FOCUS

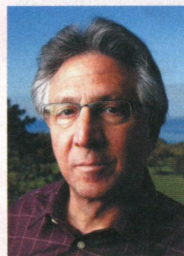


#### 271 PHYSICS

UK government chooses finalists for quantum research centres

#### 272 GEOLOGY

Researchers seek ways to forecast landslide risks



#### 274 FINANCE

Collapse of Scripps merger leaves books unbalanced

#### 276 OUTREACH

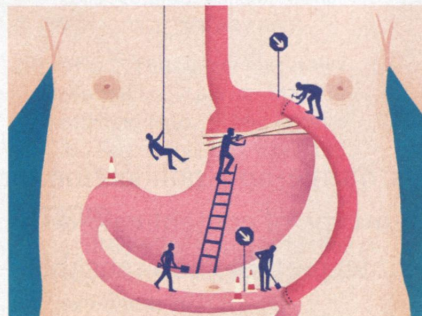
CERN establishes charity in bid to raise cash for non-core projects

## FEATURES

#### 278 PHYSICS

##### Wave of the future

LIGO detector homes in on gravitational waves



#### WEIGHT-LOSS SURGERY

## A taste of success

Why does gastric-bypass surgery help curb diabetes? **PAGE 282**

## COMMENT

### INFECTIOUS DISEASE

## Beat polio in Pakistan

Zulfiqar Ahmed Bhutta

Basic medical services, not travel vaccinations, are key to quashing the virus **PAGE 285**



### 287 PSYCHOLOGICAL TREATMENTS

#### A call for mental-health science

Emily A Holmes, Michelle G Craske & Ann M Graybiel

Clinicians and neuroscientists must forge stronger links

### BOOKS & ARTS

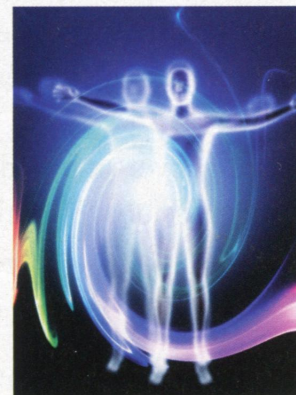
#### 291 HISTORY OF MEDICINE

##### Typhus and tyranny

Tilli Tansey

### CORRESPONDENCE

292 Take note of social scientists / Merits of virtual mobility / China closing education gap / Brain project needs transparency



### FUTURES

376

#### Are you receiving?

Rebecca Birch

# CONTENTS

17 July 2014 / Vol 511 / Issue No 7509

## RESEARCH

### NEW ONLINE

293 Papers published this week at nature.com

### NEWS & VIEWS

#### 294 HIGH-PRESSURE PHYSICS

##### **Piling on the pressure**

Compressing diamond up to a pressure of 5 terapascals

Chris J Pickard & Richard J Needs

SEE LETTER P. 330

#### 295 ECOLOGY

##### **Pesticides linked to bird declines**

Spatial correlations between neonicotinoid concentration and bird losses

Dave Goulson SEE LETTER P. 341

#### 296 ASTROPHYSICS

##### **Survival of the largest**

Detection of telltale signatures from dust in a distant supernova

Haley Gomez SEE LETTER P. 326

#### 297 NEUROBIOLOGY

##### **Keeping a lid on it**

Homeostatic regulation of neocortical neuronal circuits by Npas4

Gina Turrigiano

#### 298 CANCER

##### **Sugar-coated cell signalling**

Structure of the glycocalyx influences cell survival and metastasis

Andrew J Ewald & Mikala Egeblad

SEE ARTICLE P. 319

#### 300 MATERIALS SCIENCE

##### **A superelastic organic crystal**

Discovery of superelasticity in a single crystal of terephthalamide

Tomiki Ikeda & Toru Ube

#### 301 STEM CELLS

##### **Reprogramming finds its niche**

A supportive microenvironment aids haematopoietic stem-cell production

Daniel Lucas & Paul S Frenette

SEE ARTICLE P. 312

### ANALYSIS

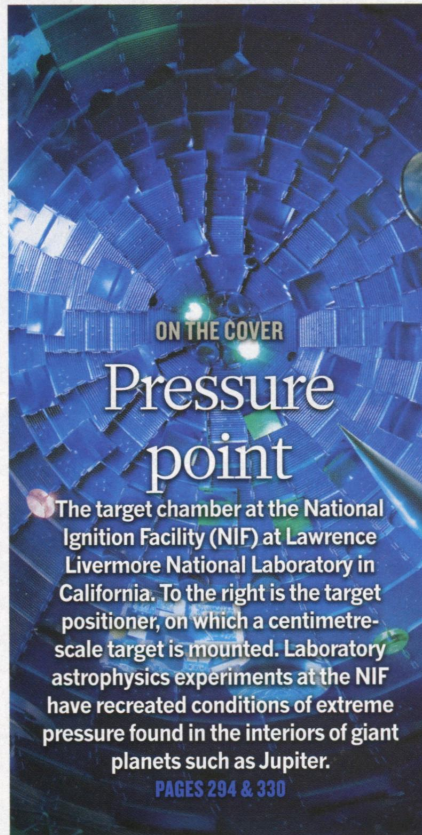
#### 303 PLANETARY SCIENCE **A deep crust–mantle boundary in the asteroid 4 Vesta**

H Clenet et al.

### ARTICLES

#### 307 EVOLUTION **Genetics of ecological divergence during speciation**

M E Arnegard et al.



312 **STEM CELLS** Reprogramming human endothelial cells to haematopoietic cells requires vascular induction  
V M Sandler SEE N&V P.301

319 **CANCER** The cancer glycocalyx mechanically primes integrin-mediated growth and survival  
M J Paszek et al. SEE N&V P.298

### LETTERS

326 **ASTROPHYSICS** Rapid formation of large dust grains in the luminous supernova 2010jl  
C Gall et al. SEE N&V P.296

330 **PLANETARY SCIENCE** Ramp compression of diamond to five terapascals  
R F Smith et al. SEE N&V P.294

334 **MATERIALS SCIENCE** A low-cost non-toxic post-growth activation step for CdTe solar cells  
J D Major, R E Treharne, L J Phillips & K Durose

338 **GEOPHYSICS** Pathway from subducting slab to surface for melt and fluids beneath Mount Rainier

R S McGary, R L Evans, P E Wannamaker, J Elsenbeck & S Rondenay

341 **ECOLOGY** Declines in insectivorous birds are associated with high neonicotinoid concentrations

C A Hallmann, R P B Foppen, C A M van Turnhout, H de Kroon & E Jongejans SEE N&V P.295

344 **NEUROSCIENCE** Genome sequencing identifies major causes of severe intellectual disability

C Gilissen et al.

348 **NEUROSCIENCE** Engineering a memory with LTD and LTP

S Nabavi et al.

353 **STEM CELLS** ABCB5 is a limbal stem cell gene required for corneal development and repair

B R Ksander et al.

358 **STEM CELLS** WNT7A and PAX6 define corneal epithelium homeostasis and pathogenesis

H Ouyang et al.

362 **CANCER** BRCA2 prevents R-loop accumulation and associates with TREX-2 mRNA export factor PCID2

V Bhatia et al.

366 **STRUCTURAL BIOLOGY** The structural basis of transfer RNA mimicry and conformational plasticity by a viral RNA

T M Colussi et al.

370 **CORRIGENDUM** Sustained translational repression by eIF2 $\alpha$ -P mediates prion neurodegeneration

J A Moreno et al.

370 **ERRATUM** CTP synthase 1 deficiency in humans reveals its central role in lymphocyte proliferation

E Martin et al.

370 **RETRACTION** Generation of cell polarity in plants links endocytosis, auxin distribution and cell fate decisions

P Dhonukshe et al.