

TM  
N23/e

# nature

THE INTERNATIONAL WEEKLY JOURNAL OF SCIENCE

## ICE AGE ART IN THE TROPICS

Indonesian cave paintings show  
figurative art present at opposite  
ends of the late Pleistocene world

PAGES 170 & 223

### PARTICLE PHYSICS

#### LHC PRIMED FOR ACTION

Physicists get ready for  
particle-collider reboot

PAGE 158



### EVOLUTION

#### SURVIVAL OF THE BEST FIT

Theorists battle over  
what's in and what's out

PAGE 161

### GUT MICROBIOTA

#### BITTER HARVEST

How artificial sweeteners  
disrupt glucose metabolism

PAGES 176 & 181

[NATURE.COM/NATURE](http://NATURE.COM/NATURE)

9 October 2014 £10

Vol. 514, No. 7521



9 770028 083095

# CONTENTS

9 October 2014 / Vol 514 / Issue No 7521

## THIS WEEK

### EDITORIALS

#### 139 INFECTIOUS DISEASES

##### Out of Africa

First Ebola cases outside Africa highlight consequences of slow control

#### 139 PUBLISHING

##### A little knowledge

Policy-makers need to decide how to deal with unpublished knowledge

#### 140 CLIMATE CHANGE

##### Holy cows

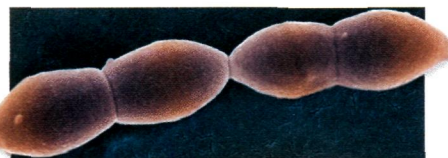
Arctic walrus struggle to cope with vanishing ice

### WORLD VIEW

#### 141 A call to those who care about Europe's science

*Amaya Moro-Martin*

Europe's new research commissioner needs to fight the funding-cuts trend



### RESEARCH HIGHLIGHTS

#### 142 SELECTIONS FROM THE SCIENTIFIC LITERATURE

Genetics and height / Oceans getting warmer / Fluid-based sensors / Living with ants / NIH grants reviews raise hackles / Curiosity boosts learning / Mid-depth quake risk

### SEVEN DAYS

#### 144 THE NEWS IN BRIEF

Italy declines to support stem-cell therapy / Imperial College cleared / Nobel prizes announced / First carbon-capture plant launched

## CAREERS

#### 263 FAMILY

##### Community care

Many researchers balance full-time research with care of elderly relatives

### NATUREJOBS ADVERTISING FEATURE

Spotlight on the University of Tsukuba

## NEWS IN FOCUS



#### 147 GREENLAND

Telescope plans for Summit Station trigger rethink of site

#### 148 POLICY

Australian scientists lash back at government cuts

#### 150 PHYSICS

Metrologists look for ways to pin down gravitational constant

#### 151 NEUROSCIENCE

Japan launches brain project that makes use of transgenic marmosets

#### 152 NOBEL PRIZE

Blue light-emitting diodes win physics accolade

#### 153 NOBEL PRIZE

Brain's global positioning system scoops physiology award

## FEATURES

### NEUROSCIENCE

## On the grid

Nobel prizewinners worked together on brain navigation for 30 years

PAGE 154



#### 158 PARTICLE PHYSICS

##### The big reboot

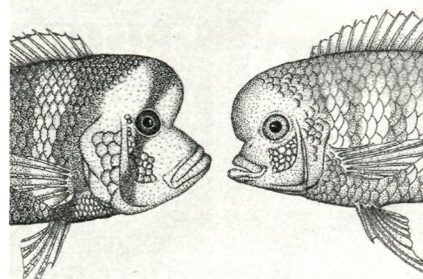
Physicists prepare for restart of Large Hadron Collider

## COMMENT

### POINT/COUNTERPOINT

## Evolution rethink

Some biologists consider standard evolutionary theory inadequate, others think it is doing just fine PAGE 161



### BOOKS & ARTS

#### 166 PUBLIC HEALTH

##### The malaria wars

*Robert Seder*

#### 167 GERONTOLOGY

##### Ageing more gracefully

*Linda Geddes*

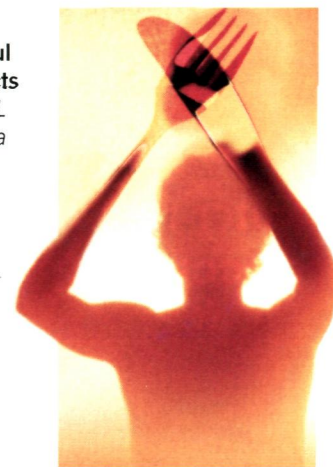
### CORRESPONDENCE

168 Remote sensing for all / Renewable energy doesn't travel / All-renewable is a realistic goal / A Franck look at photosynthesis / Brazilian maths 1, Brazilian football 0

### FUTURES

#### 266 Useful objects

*Erika L Satifka*



# CONTENTS

9 October 2014 / Vol 514 / Issue No 7521

## RESEARCH

### NEW ONLINE

169 Papers published this week at nature.com

### NEWS & VIEWS

#### 170 ARCHAEOLOGY

##### Art on the move

Indonesian cave paintings dated to 39,000 years ago

Wil Roebroeks [SEE LETTER P.223](#)

#### 171 ULTRALUMINOUS X-RAY SOURCES

##### Small field with a large impact

The nature of ultraluminous X-ray astronomical sources

Jeanette C Gladstone

[SEE LETTERS P.198 & P.202](#)

#### 173 STRUCTURAL BIOLOGY

##### Lariat lessons

Crystal structure of a group II intron

Robert T Batey [SEE ARTICLE P.193](#)

#### 174 PARTICLE PHYSICS

##### The mass of a top

Most-precise single measurement of the mass of the top quark

Peter Skands

#### 176 HEALTH

##### The weighty costs of non-caloric sweeteners

Sugar substitutes alter gut microbiota and induce metabolic changes

Taylor Feehley & Cathryn R Nagler

[SEE ARTICLE P.181](#)

#### 177 MATERIALS ANALYSIS

##### Good vibrations

Electron monochromators for scanning transmission electron microscopy

Rik Brydson [SEE LETTER P.209](#)

#### 178 ANIMAL BEHAVIOUR

##### Incipient tradition in wild chimpanzees

Tracking tool-use adoption along a chimp social network

Andrew Whiten

### ARTICLES

181 **MICROBIOME** Artificial sweeteners induce glucose intolerance by altering the gut microbiota

J Suez et al. [SEE N&V P.176](#)

187 **IMMUNOLOGY** Inflammatory caspases are innate immune receptors for intracellular LPS

J Shi et al.



### ON THE COVER

## Origins of art

A representation of an anoa — a type of dwarf buffalo — and human hand stencils from a cave in Sulawesi, Indonesia. Figurative art of this type was present at opposite ends of the late Pleistocene world, not just in western Europe. Was cave painting practised by the first *Homo sapiens* to leave Africa tens of thousands of years earlier? [PAGES 170 & 223](#)

193 **STRUCTURAL BIOLOGY** Crystal structure of a eukaryotic group II intron lariat

A R Robart, R T Chan, J K Peters, K R Rajashankar & N Tor

[SEE N&V P.173](#)

### LETTERS

198 **ASTROPHYSICS** A mass of less than 15 solar masses for the black hole in an ultraluminous X-ray source

C Motch, M W Pakull, R Soria, F Grisé & G Pietrzyński [SEE N&V P.171](#)

202 **ASTROPHYSICS** An ultraluminous X-ray source powered by an accreting neutron star

M Bachetti et al. [SEE N&V P.171](#)

205 **CONDENSED-MATTER PHYSICS** Large, non-saturating magnetoresistance in WTe<sub>2</sub>

M N Ali et al.

209 **MICROSCOPY** Vibrational spectroscopy in the electron microscope

O L Krivanek et al. [SEE N&V P.177](#)

213 **CLIMATE SCIENCES** Global covariation of carbon turnover times with climate in terrestrial ecosystems

N Carvalhais et al.

218 **ATMOSPHERIC CHEMISTRY** High

secondary aerosol contribution to particulate pollution during haze events in China

R-J Huang et al.

223 **ARCHAEOLOGY** Pleistocene cave art from Sulawesi, Indonesia

M Aubert et al. [SEE N&V P.170](#)

228 **CANCER** Inappropriate p53 activation during development induces features of CHARGE syndrome

J L Van Nostrand et al.

233 **STEM CELLS** Protein competition switches the function of COP9 from self-renewal to differentiation

L Pan et al.

237 **IMMUNOLOGY** Interleukin-22 alleviates metabolic disorders and restores mucosal immunity in diabetes

X Wang et al.

242 **HAEMATOLOGICAL DISEASES** HSP70 sequestration by free  $\alpha$ -globin promotes ineffective erythropoiesis in  $\beta$ -thalassaemia

J-B Arlet et al.

247 **CANCER** PRC2 loss amplifies Ras-driven transcription and confers sensitivity to BRD4-based therapies

T De Raedt et al.

252 **STRUCTURAL BIOLOGY** Mechanism of Dis312 substrate recognition in the Lin28–let-7 pathway

C R Faehnle, J Walleshauser & L Joshua-Tor

257 **MOLECULAR BIOLOGY** Required enhancer–matrin-3 network interactions for a homeodomain transcription program

D Skowronska-Krawczyk et al.

262 **CORRIGENDUM** A global strategy for road building

W F Laurance et al.

262 **CORRIGENDUM** Comprehensive molecular profiling of lung adenocarcinoma

The Cancer Genome Atlas Research Network

262 **ERRATUM** Haematopoietic stem cells and early lymphoid progenitors occupy distinct bone marrow niches

L Ding & S J Morrison

MAXIME AUBERT