

ПН
№ 28/e

nature

THE INTERNATIONAL WEEKLY JOURNAL OF SCIENCE

BURNING ISSUE

Managed ecosystems losing diversity face
collapse in the event of stress **PAGE 86**

CLIMATE

CRACKING MYSTERIES

Ten things we don't know
about snow and ice

PAGE 27

METAGENOMICS

EARTHLY POWERS

Two views of the microbes
that make soil tick

PAGE 40

CANCER

A MOVING TARGET

Technologies that track
and treat metastasis

PAGE 131

NATURE.COM/NATURE

7 February 2013 £10

Vol. 494, No. 7435



CONTENTS

7 February 2013 / Vol 494 / Issue No 7435

THIS WEEK

EDITORIALS

- 5 **HEALTH**
Unknown territory
Japan should beware loopholes as it begins to regulate stem-cell therapies
- 5 **NUCLEAR WASTE**
In a hole
Going underground is the only viable choice for storing nuclear waste
- 6 **ARCHAEOLOGY**
Body of evidence
Those who discovered the remains of Richard III deserve their time in the sun



WORLD VIEW

- 7 **Genetic privacy needs a more nuanced approach**
Misha Angrist
There are advantages to having your genomic details in the public domain

RESEARCH HIGHLIGHTS

- 8 **SELECTIONS FROM THE SCIENTIFIC LITERATURE**
Bacterial gold / Mosquito rivalry / Risk factors for malnutrition / Jet stream on the move / Clock-watching ribosomes / Cats on the prowl / Handy neutrons

SEVEN DAYS

- 10 **THE NEWS IN BRIEF**
US seeks to ease immigration laws / Antisense drug wins approval / US collider marked for possible closure / Pfizer spins out animal-health business / Steven Chu steps down / TB vaccine fails clinical trial

CAREERS

- 137 **COMMUNICATION**
Two minutes to impress
Researchers need a pitch short enough to deliver in an elevator ride
- 139 **TURNING POINT**
Even high-school students can do worthwhile research, says theoretical physicist Yogesh Joglekar
- 139 **CAREER BRIEFS**

NEWS IN FOCUS

- 13 **EARTH SCIENCE**
Landsat 8 prepares for liftoff
- 14 **NUCLEAR ENERGY**
Evidence of geological faults rattle Japan's plans to restart reactors
- 15 **CHEMICAL SAFETY**
Hydrogen fluoride leaks raise questions about safety in South Korean industry
- 16 **PARTICLE PHYSICS**
Researchers face busy schedule as LHC shuts down for maintenance
- 19 **UNIVERSITIES**
UCSF's Mission Bay campus seeks ways to combat lean financial climate
- 20 **DRUG DEVELOPMENT**
Public-private consortium aims to re-energize Europe's drug industry

FEATURES

- 22 **ECOLOGY**
Survival of the flexible
Extremes of heat and cold could spell the end for tropical species that have had little exposure to either



TRANSLATIONAL SCIENCE

Medicine man

Christopher Austin's bid to jump-start drug discovery **PAGE 24**

TECHNOLOGY

- 131 **CANCER**
Tracking metastasis and tricking cancer
New technologies are being used to predict the movement of metastatic cells—and to destroy them

COMMENT



CHEMICAL PHYSICS

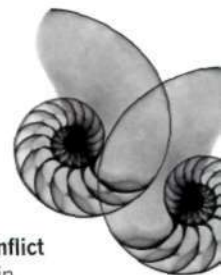
Ten cool questions

Ice is central to the workings of the planet yet it still has too many mysteries, says Thorsten Bartels-Rausch **PAGE 27**

- 29 **ENERGY**
Build a biomass energy market
Heinz Kopetz
Incentives from government are crucial for making the most of biofuels

BOOKS & ARTS

- 32 **IN RETROSPECT**
On Growth and Form
Philip Ball
- 33 **BOOKS IN BRIEF**
- 34 **Q&A**
Chronicler of conflict
Richard Rhodes in conversation about nuclear weapons and the Spanish Civil War



CORRESPONDENCE

- 35 *The Royal Institution matters / Vital statistics / Bogus species / We've got enough colliders*

OBITUARY

- 37 **Brigitte Askonas (1923–2013)**
Anne O'Garra

FUTURES

- 142 **Local 623**
Donald S Crankshaw

CONTENTS

7 February 2013 / Vol 494 / Issue No 7435

RESEARCH

NEW ONLINE

39 Papers published this week at nature.com

NEWS & VIEWS

40 FORUM: MICROBIOLOGY

The life beneath our feet

Comparing approaches to identify and characterize soil microorganisms
Janet K Jansson; James I Prosser

43 SOLID-STATE PHYSICS

A new spin on spintronics

Reconfigurable computing blocks based on semiconductor junctions
Sayeef Salahuddin SEE LETTER P.72

44 NEUROSCIENCE

Salty sensations

Identification of TMC proteins as salt sensors in *C. elegans*
Bertrand Coste & Ardem Patapoutian
SEE LETTER P.95

45 FUNGAL BIOLOGY

Multiple mating strategies

Isolation of haploid strains of the pathogen *C. albicans*
Neil A R Gow SEE ARTICLE P.55

46 ASTROPHYSICS

Going supernova

Outburst from a massive star 40 days before it exploded as a supernova
Alexander Heger SEE LETTER P.65

REVIEW

49 PHYSICS Spin-orbit coupling in quantum gases

V Galitski & I B Spielman

ARTICLES

55 FUNGAL GENETICS The 'obligate diploid' *Candida albicans* forms mating-competent haploids

M A Hickman et al. SEE N&V P.45

60 IMMUNOLOGY Structural basis for viral 5'-PPP-RNA recognition by human IFIT proteins

Y M Abbas, A Pichlmair, M W Górna, G Superti-Furga & B Nagar

LETTERS

65 ASTRONOMY An outburst from a massive star 40 days before a supernova explosion
E O Ofek et al. SEE N&V P.46



ON THE COVER

Fire hazard

Grasslands in the Pacific Northwest of North America that have been protected from fire for over a hundred years lose biodiversity. And with it they lose the capacity to recover if they are hit by fire, despite retaining resilience to climate and invasive species. PAGE 86

68 APPLIED PHYSICS Reconstructing state mixtures from diffraction measurements

P Thibault & A Menzel

72 APPLIED PHYSICS Magnetic-field-controlled reconfigurable semiconductor logic

S Joo et al. SEE N&V P.43

77 INFORMATION TECHNOLOGY Towards practical, high-capacity, low-maintenance information storage in synthesized DNA

N Goldman et al.

81 CLIMATE SCIENCE Northern Hemisphere forcing of Southern Hemisphere climate during the last deglaciation

F He et al.

86 ECOLOGY Diversity loss with persistent human disturbance increases vulnerability to ecosystem collapse

A S MacDougall, K S McCann, G Gellner & R Turkington

90 NEUROSCIENCE Suppression of neuroinflammation by astrocytic dopamine D2 receptors via $\alpha\beta$ -crystallin

W Shao et al.

95 NEUROBIOLOGY *tmc-1* encodes a sodium-sensitive channel required for salt chemosensation in *C. elegans*
M Chatzigeorgiou, S Bang, S W Hwang & W R Schafer SEE N&V P.44

100 STEM CELLS Negligible immunogenicity of terminally differentiated cells derived from induced pluripotent or embryonic stem cells

R Araki et al.

105 CARDIOVASCULAR BIOLOGY Studying arrhythmogenic right ventricular dysplasia with patient-specific iPSCs

C Kim et al.

111 DISEASE Obesity-induced overexpression of miR-802 impairs glucose metabolism through silencing of *Hnf1b*

J-W Kornfeld et al.

116 IMMUNOLOGY Microbiota restricts trafficking of bacteria to mesenteric lymph nodes by CX₃CR1^{hi} cells

G E Diehl et al.

121 BIOCHEMISTRY ATP-directed capture of bioactive herbal-based medicine on human tRNA synthetase

H Zhou, L Sun, X-L Yang & P Schimmel

125 DEVELOPMENT Mitotic cell rounding accelerates epithelial invagination

T Kondo & S Hayashi

130 CORRIGENDUM The zebrafish dorsal axis is apparent at the four-cell stage

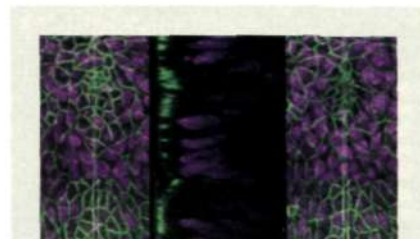
A V Gore et al.

130 CORRIGENDUM How cancer metabolism is tuned for proliferation and vulnerable to disruption

A Schulze & A L Harris

130 ERRATUM Making sense of palaeoclimate sensitivity

PALAEOSSENS Project Members



DEVELOPMENTAL BIOLOGY

Round trip

Cell shape is a key factor in mitotic cells in the early embryo. PAGE 125

GRASS FIRE (DARRUSH M. SHUTTERSTOCK)