

TW  
N28/e

# nature

THE INTERNATIONAL WEEKLY JOURNAL OF SCIENCE

## STRIKE TWO

The two planet-scale collisions that shaped asteroid 4 Vesta

PAGE 207



**POLLUTION**

### PLASTIC NOT FANTASTIC

*A call to treat plastics as hazardous waste*

PAGE 169

**ECODESIGN**

### BUILDING THE FUTURE

*Architects and engineers making more with less*

PAGE 172

**NEUROSCIENCE**

### ANATOMY OF A DRUG TARGET

*G-protein-coupled receptors compared*

PAGE 185

**NATURE.COM/NATURE**

14 February 2013 £10

Vol. 494, No. 7436



# CONTENTS

14 February 2013 / Vol 494 / Issue No 7436

## THIS WEEK

### EDITORIALS

#### 147 FUNDING

##### **A deal on the horizon**

Scientists cannot afford to be complacent as Europe settles on its research budget

#### 147 HEALTH

##### **Preventive therapy**

The path to clinical trials for stem-cell treatments needs to be smoothed

#### 148 NATURAL DISASTERS

##### **Damage control**

New York faces tough decisions after Superstorm Sandy

### WORLD VIEW

#### 149 **Redefine misconduct as distorted reporting**

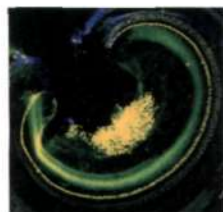
*Daniele Fanelli*

It's not just what is written up but what is omitted that is important

### RESEARCH HIGHLIGHTS

#### 150 SELECTIONS FROM THE SCIENTIFIC LITERATURE

Immunity gets easier / Nanodiamond lasers / Inner-ear repair / Bats a viral



reservoir / A yes to Flores 'hobbit' as species / A new antibiotic / Torsion measured

### SEVEN DAYS

#### 152 THE NEWS IN BRIEF

Life found in subglacial lake / Germany's science minister resigns / Suresh quits NSF / Poaching more than halves Gabon's forest elephant population / Solomon Islands hit by tsunami

## CAREERS

#### 271 SCIENCE COMMUNICATION

##### **From page to screen**

Science writers in the online world need to spread their net wide

#### 273 CAREER BRIEFS

## NEWS IN FOCUS

#### 155 EPIDEMIOLOGY

US flu outbreak puts Google in a spin



#### 156

##### **GENETICS**

Researchers network to help identify rare genetic conditions

#### 158

##### **POLICY**

US science agencies brace themselves for sweeping cuts

#### 159 FUNDING

Europe's budget scales back plans for science programme

#### 160 GLOBAL HEALTH

Synthetic biology promises rapid route to malaria drug

#### 161 PUBLISHING

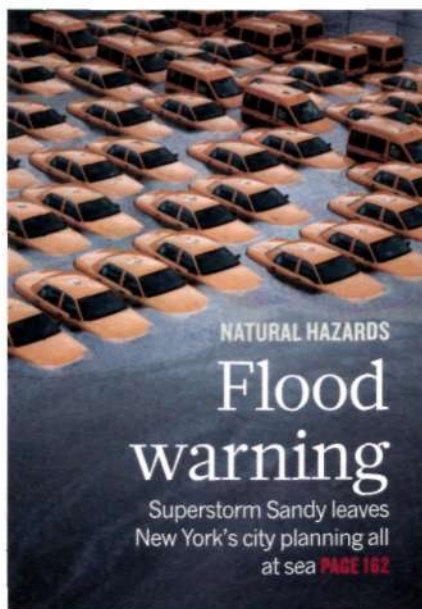
Company puts a price on peer review in bid to ease publication process

### FEATURES

#### 166 BIOTECHNOLOGY

##### **Cowboy culture**

A Texas firm's approach to stem-cell therapy is causing a stir



NATURAL HAZARDS

## Flood warning

Superstorm Sandy leaves New York's city planning all at sea [PAGE 162](#)

## COMMENT

#### 169 POLLUTION

##### **Classify plastic waste as hazardous**

*Chelsea M Rochman, Mark Anthony Browne et al.*

Urgent action is needed to stem the damaging tide of debris

### BOOKS & ARTS



ECO-ENGINEERING

## Material gains

Chris Wise, Michael Pawlyn and Michael Braungart have designs on nature [PAGE 172](#)

#### 175 THEATRE

##### **The needle in Newton's eye**

*Alla Katsnelson*

### CORRESPONDENCE

176 Act now to tackle resistant TB / More to research than papers / Teilhard for short, not de Chardin

### FUTURES

#### 276 Peace

*Danny Dunlavy*



# CONTENTS

14 February 2013 / Vol 494 / Issue No 7436

## RESEARCH

### NEW ONLINE

177 Papers published this week at nature.com

### NEWS & VIEWS

#### 178 NEUROSCIENCE

##### To go or not to go

The neural circuitry that decides what to do as well as what not to do

*D James Surmeier* **SEE LETTER P.238**

#### 179 ASYMMETRIC SYNTHESIS

##### Relay catalysis at a boron centre

Enantioselective allyl addition to activated imines and carbonyls

*Valer Jeso & Glenn C Micalizio*

**SEE LETTER P.216**

#### 181 CELL BIOLOGY

##### Beneficial lessons from viruses

Discovery of a pro-autophagy peptide of possible therapeutic value

*Adolfo García-Sastre*

**SEE ARTICLE P.201**

#### 182 EARTH SCIENCE

##### All rise for the case of the missing magma

The cause of uplift of the Marion Rise

*John MacLennan* **SEE ARTICLE P.195**

### REVIEW

#### 185 NEUROSCIENCE Molecular signatures of G-protein-coupled receptors

*A J Venkatakrisnan et al.*

### ARTICLES

#### 195 TECTONICS Thin crust as evidence for depleted mantle supporting the Marion Rise

*H Zhou & H J B Dick* **SEE N&V P.182**

#### 201 CELL BIOLOGY Identification of a candidate therapeutic

### EVOLUTION

## Back issue

Surprising variety in the design of vertebrae of early tetrapods. **PAGE 226**



### ON THE COVER

## Strike two

A model of the planet-scale collision that formed the giant Rheasilvia crater at the south pole of asteroid 4 Vesta. NASA's Dawn mission to the asteroid revealed unexpected surface features, now explained by a numerical modelling study. **PAGE 207**

autophagy-inducing peptide

*S Shoji-Kawata et al.* **SEE N&V P.181**

### LETTERS

#### 207 ASTRONOMY The structure of the asteroid 4 Vesta as revealed by models of planet-scale collisions

*M Jutzi, E Asphaug, P Gillet,*

*J-A Barrat & W Benz*

#### 211 QUANTUM PHYSICS Hybrid circuit cavity quantum electrodynamics with a micromechanical resonator

*J-M Pirkkalainen et al.*

#### 216 CHEMISTRY Simple organic molecules as catalysts for enantioselective synthesis of amines and alcohols

*D L Silverio et al.* **SEE N&V P.179**

#### 222 CLIMATE SCIENCE Insolation-induced mid-Brunhes transition in Southern Ocean ventilation and deep-ocean temperature

*Q Yin*

#### 226 EVOLUTION Vertebral architecture in the earliest stem tetrapods

*S E Pierce et al.*

#### 230 ECOLOGY Biodiversity decreases disease through predictable changes in host community competence

*P T J Johnson, D L Preston,*

*J T Hoverman & K L D Richgels*

#### 234 GENETICS Finding the sources of missing heritability in a yeast cross

*J S Bloom, I M Ehrenreich, W T Loo, T-L V Lite & L Kruglyak*

#### 238 NEUROSCIENCE Concurrent activation of striatal direct and indirect pathways during action initiation

*G Cui et al.* **SEE N&V P.178**

#### 243 DEVELOPMENTAL BIOLOGY A direct and melanopsin-dependent fetal light response regulates mouse eye development

*S Rao et al.*

#### 247 STEM CELLS *In vitro* expansion of single Lgr5<sup>+</sup> liver stem cells induced by Wnt-driven regeneration

*M Huch et al.*

#### 251 CANCER Modelling vemurafenib resistance in melanoma reveals a strategy to forestall drug resistance

*M Das Thakur et al.*

#### 256 DISEASE Biguanides suppress hepatic glucagon signalling by decreasing production of cyclic AMP

*R A Miller et al.*

#### 261 IMMUNOLOGY A T-bet gradient controls the fate and function of CCR6<sup>+</sup>RORγt<sup>+</sup> innate lymphoid cells

*C S N Klose et al.*

#### 266 BIOTECHNOLOGY A complete mass-spectrometric map of the yeast proteome applied to quantitative trait analysis

*P Picotti et al.*

### DEVELOPMENT

## First light

In mice, fetal exposure to light is vital for the development of vision. **PAGE 243**

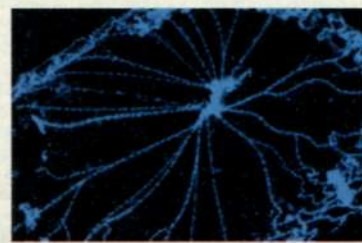


ILLUSTRATION: MARK GARLICK