

ПН,
№28/e

OUTLOOK
Schizophrenia

nature

THE INTERNATIONAL WEEKLY JOURNAL OF SCIENCE

MALIGN COOPERATION

SUBCLONE COLLUSION MAINTAINS
GROWTH IN WNT-INITIATED
MAMMARY CANCER **PAGES 52 & 113**

COSMOLOGY

COLD COMFORTS

How Antarctic astronomy
nailed cosmic inflation

PAGE 28



HUMAN ORIGINS

FIRST IN OUR GENUS

Reflections on
Homo habilis at fifty

PAGE 31

SCIENCE FICTION

TO CUT A LONG STORY SHORT

microFutures competition
winners revealed

PAGE 144

NATURE.COM/NATURE

3 April 2014 £10

Vol. 508, No. 7494



CONTENTS

3 April 2014 / Vol 508 / Issue No 7494

THIS WEEK

EDITORIALS

- 7 **CLIMATE SCIENCE**
Brace for impacts
Adaptation to climate change is key
- 7 **BIOLOGY**
Natural decline
Where have all the naturalists gone?
- 8 **NEUROSCIENCE**
Brain waves
Big neuroscience comes of age



WORLD VIEW

- 9 **Political borders should not hamper wildlife**
Aaron M Ellison
At-risk species have lost out in the past to disruptive national border changes and could do so again

RESEARCH HIGHLIGHTS

- 10 **SELECTIONS FROM THE SCIENTIFIC LITERATURE**
Drosophila connectome / Finger sucking good for neonates / Birds suffer in the city / In-depth study of whales / Mid-East origin for cattle

SEVEN DAYS

- 12 **THE NEWS IN BRIEF**
Misconduct in stem-cell papers / Japanese whaling 'unscientific' / Ebola outbreak spreads / US plans methane cuts

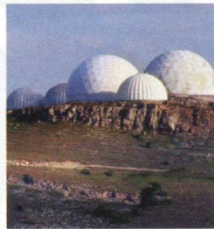
CAREERS

- 139 **TRANSLATIONAL RESEARCH**
Cancer killers
Basic research is still key to the development of cancer immunotherapy
- 141 **TURNING POINT**
Geochemist Liping Qin finds that cool rocks excite graduate students in China
- 141 **CAREER BRIEFS**

NATUREJOBS ADVERTISING FEATURE

Spotlight on cancer research

NEWS IN FOCUS



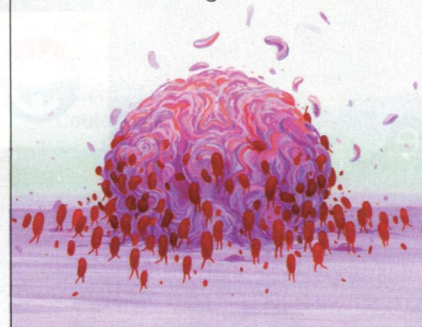
- 15 **POLICY**
Turbulent times for Ukrainian science
- 16 **DRUG DEVELOPMENT**
Disease definitions drive orphan drugs
- 19 **SPACE**
European researchers home in on choice for landing site on Mars
- 20 **CLIMATE**
Prospect of El Niño highlights data deficiencies
- 22 **EPIDEMIOLOGY**
Chemical patterns in DNA hint at deeper information on disease

FEATURES

CANCER TREATMENT

The killer within

Can the immune system be marshalled to fight cancer? **PAGE 24**



- 28 **COSMOLOGY**
Polar star
How John Kovac's team captured evidence for an inflationary Universe

TECHNOLOGY

- 133 **CANCER**
Sharp shooters
Recent developments suggest that charged-particle radiation therapy has the potential to take radiation oncology to new levels

COMMENT



- 31 **HUMAN EVOLUTION**
Fifty years after *Homo habilis*
Bernard Wood
Handy man's place in human — or hominin — evolution remains as controversial as ever
- 33 **SUSTAINABLE DEVELOPMENT**
Mobilize citizens to track sustainability
Angel Hsu, Omar Malik, Laura Johnson & Daniel C Esty
Collecting the data is crucial to UN efforts on the environment
- 36 **POLICY**
Free Indian science
Mathai Joseph & Andrew Robinson
Bloated bureaucracy is suffocating a once dynamic research sector

BOOKS & ARTS

- 39 **TUDOR TECHNOLOGY**
Shakespeare and science
Jennifer Rampling
- 41 **EARTH SYSTEMS**
No place like home
Tim Lenton
- 42 **PSYCHOLOGY**
The clamorous mind
Susanne Ahmari
- 43 **BOOKS IN BRIEF**

CORRESPONDENCE

- 44 **ArXiv exposes fakery / Better science advice / Journal-driven data sharing / Harnessing free computer power**

FUTURES

- 144 **microFutures**
Prizewinning science fiction in 200 characters or less



CONTENTS

3 April 2014 / Vol 508 / Issue No 7494

RESEARCH

NEW ONLINE

45 Papers published this week at nature.com

NEWS & VIEWS

46 CANCER

Disabling defences in the brain

Serpins promote survival and vascular co-option of metastasized cells
Janine T Erler

47 IMMUNOLOGY

A is for immunity

Vitamin A deficiency in pregnancy impairs lymphoid development in offspring
G rard Eberl [SEE LETTER P.123](#)

48 SOLAR SYSTEM

Ring in the new

A ring system around a Centaur object
Joseph A Burns [SEE LETTER P.72](#)

50 VASCULAR BIOLOGY

Brain vessels squeezed to death

Pericyte constriction regulates capillary blood flow in the brain
Daniel M Greif & Anne Eichmann
[SEE ARTICLE P.55](#)

51 PLANETARY SCIENCE

A chronometer for Earth's age

Measuring the time at which Earth finished forming
John Chambers [SEE LETTER P.84](#)

52 CANCER

Clonal cooperation

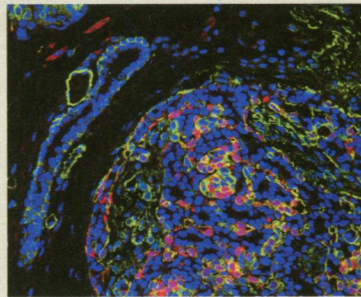
Mammary tumours that require paracrine interactions between clones
Kornelia Polyak & Andriy Marusyk
[SEE LETTER P.113](#)

ARTICLES

55 **VASCULAR BIOLOGY** Capillary pericytes regulate cerebral blood flow in health and disease
C N Hall et al. [SEE N&V P.50](#)

61 **STRUCTURAL BIOLOGY** Mechanism of Tc toxin action revealed in molecular detail
D Meusch et al.

66 **MOLECULAR BIOLOGY** Poly(A)-tail profiling reveals an embryonic switch in translational control
A O Subtelny, S W Eichhorn, G R Chen, H Sive & D P Bartel



ON THE COVER

Twin threat

Mammary tumour cells from a donor mouse (red) expressing a lineage marker (green) congregate with host-derived epithelial cells. The mammary duct on the left retains its architecture in the absence of infiltration by the donor-derived tumour subclone. Interacting subclones can make a tumour hard to treat. [PAGES 52 & 113](#)

LETTERS

72 **PLANETARY SCIENCE** A ring system detected around the Centaur (10199) Chariklo
F Braga-Ribas et al. [SEE N&V P.48](#)

76 **ATOMIC AND MOLECULAR PHYSICS** Efficient rotational cooling of Coulomb-crystallized molecular ions by a helium buffer gas
A K Hansen et al.

80 **OPTICAL PHYSICS** Coherent control of the waveforms of recoilless γ -ray photons
F Vagizov, V Antonov, Y V Radeonychev, R N Shakhmuratov & O Kocharovskaya

84 **GEOPHYSICS** Highly siderophile elements in Earth's mantle as a clock for the Moon-forming impact
S A Jacobson et al. [SEE N&V P.51](#)

88 **NEUROSCIENCES** The hippocampal CA2 region is essential for social memory
F L Hitti & S A Siegelbaum

93 **STEM CELLS** Mouse liver repopulation with hepatocytes generated from human fibroblasts
S Zhu et al.

98 **CANCER** Constitutional and somatic rearrangement of chromosome 21 in acute lymphoblastic leukaemia
Y Li et al.

103 **CANCER** XBP1 promotes triple-negative breast cancer by controlling the HIF1 α pathway
X Chen et al.

108 **CANCER** Metabolic determinants of cancer cell sensitivity to glucose limitation and biguanides
K Birsoy et al.

113 **CANCER** Tumour cell heterogeneity maintained by cooperating subclones in Wnt-driven mammary cancers
A S Cleary, T L Leonard, S A Gestl & E J Gunther [SEE N&V P.52](#)

118 **CANCER** Reversible and adaptive resistance to BRAF(V600E) inhibition in melanoma
C Sun et al.

123 **IMMUNOLOGY** Maternal retinoids control type 3 innate lymphoid cells and set the offspring immunity
S A van de Pavert et al. [SEE N&V P.47](#)

128 **PHYSIOLOGY** Mitoflash frequency in early adulthood predicts lifespan in *Caenorhabditis elegans*
E-Z Shen et al.

STRUCTURAL BIOLOGY

Toxic mix

The structure of entire *Photobacterium luminescens* Tc toxin, its subunits and its complexes. [PAGE 61](#)

