



Volume 59, Issue 9  
December 2025

PALEONTOLOGICAL JOURNAL

21 articles in this issue

## **Foreword**

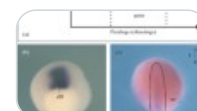
**Events** | 02 February 2026 | Pages: 991 - 993

## **Protostomia and Deuterostomia: Do They Exist?**



**OriginalPaper** | 02 February 2026 | Pages: 994 - 1039

## **Embryonic Induction Mechanisms in Vertebrates: Conserved Principles and Flexible Details**



**OriginalPaper** | 02 February 2026 | Pages: 1040 - 1056

## **The Taxonomic Characters of Coral Polyps and the Position of the Recently Described Ordovician Coral *Lindaphylon* Rozhnov, 2024 (Cnidaria: Anthozoa: Lindaphylonaceae: Lindaphylonidae)**



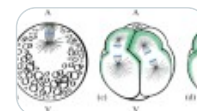
**OriginalPaper** | 02 February 2026 | Pages: 1057 - 1082

## **From Embryo to Colony: The Role of Wnt Signaling Pathways in Body Plan Formation in Cnidaria**



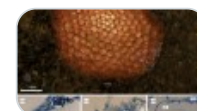
**OriginalPaper** | 02 February 2026 | Pages: 1083 - 1098

## **Mechanisms and Evolution of Primary Axial Specification in Annelid Development**



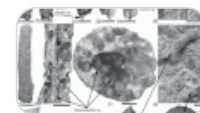
**OriginalPaper** | 02 February 2026 | Pages: 1099 - 1113

## **Vestibular Glands in Cheilostome Bryozoans: Structure, Distribution and Probable Function**



**OriginalPaper** | 02 February 2026 | Pages: 1114 - 1129

## **Pseudoerect Colonies and Erect Colonies with an Axial Canal and a Central Cavity in Fossil Bryozoans: Morphology and Paleoecology**



OriginalPaper | 02 February 2026 | Pages: 1130 - 1145

---

## **Key Innovations in the Evolution of Post-Paleozoic Bryozoans of the Class Stenolaemata**

OriginalPaper | 02 February 2026 | Pages: 1146 - 1153

---

## **The Problem of Axial Organization and Body Plan of Brachiopods in Phylogeny**



OriginalPaper | 02 February 2026 | Pages: 1154 - 1166

---

## **Morphobiological Analysis of the Shell Structure in the Brachiopod Subclass Strophomenata**



OriginalPaper | 02 February 2026 | Pages: 1167 - 1173

---

## **Pentaxonic Body Plan in Adult Living Echinoderms**



OriginalPaper | 02 February 2026 | Pages: 1174 - 1186

---

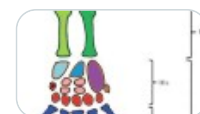
## **The Larval Anteroposterior Bilateral Asymmetrical Axis of Echinoderms; a Landmark for Establishing Ambulacral Homology**



OriginalPaper | 02 February 2026 | Pages: 1187 - 1209

---

## **Exploring the Pathways and Mechanisms of Evolutionary Transformation of Paired Appendages in Gnathostomes**



OriginalPaper | 02 February 2026 | Pages: 1210 - 1254

---

## **From Morphomechanics to Integral Mechanobiology**

OriginalPaper | 02 February 2026 | Pages: 1255 - 1266

---

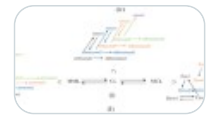
## **Life Cycle Modifications, Neoteny, Retardation, Heterochrony (Using the Example of Amphibians)**



OriginalPaper | 02 February 2026 | Pages: 1267 - 1272

---

## **Formulas of the Multilevel Increase in Biological Complexity during Progressive Evolution of Organisms**



OriginalPaper | 02 February 2026 | Pages: 1273 - 1277

---

## **Photosymbiosis as the Main Evolutionary Pathway of Modular Fungi and Corals**

OriginalPaper | 02 February 2026 | Pages: 1278 - 1290

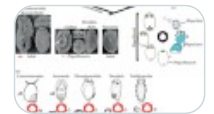
---

## **Polyvariance of Ontogeny and Structural Evolution of Modular Organisms**

OriginalPaper | 02 February 2026 | Pages: 1291 - 1300

---

## **Models of Ancestral Ontogenetic Cycles: Doridida, Nudibranchia, Bilateria**



OriginalPaper | 02 February 2026 | Pages: 1301 - 1318

---

## **Nothing in Biology Makes Sense Except in the Light of Ontogeny—Organism as Ontogeny, a New Paradigm for Science**



OriginalPaper | 02 February 2026 | Pages: 1319 - 1338

---