

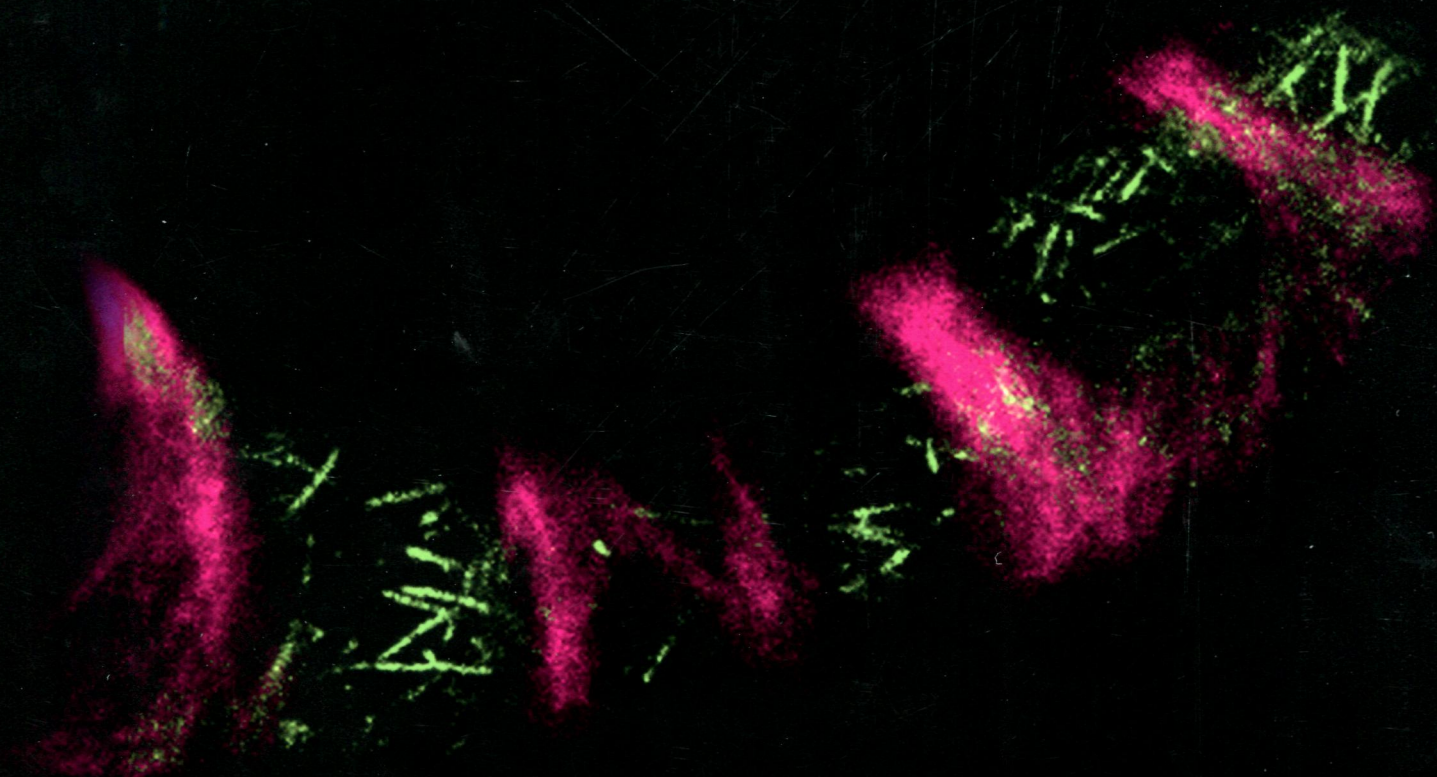
ПН
P71/1C

VOLUME 25

NUMBER 11

NOVEMBER 2013

T H E
PLANT
C E L L



SECONDARY CELL WALL PATTERNING

www.plantcell.org

T H E
PLANT
C E L L

Volume 25 Number 11 November 2013

The electronic form of this issue, available at www.plantcell.org, is the journal of record.

ON THE COVER



Xylem vessels develop patterned secondary cell walls. Cortical microtubules are well known to guide the deposition of the secondary cell walls, yet knowledge about the proteins that directly regulate cortical microtubule dynamics is limited. Oda and Fukuda (pages 4439–4450) demonstrated that *Arabidopsis* Kinesin-13A is recruited to the future secondary pit area through the ROP11-MIDD1 pathway and locally depolymerizes cortical microtubules, which prevents secondary wall formation. The cover shows the cortex of differentiating cultured xylem cells expressing GFP-Kinesin-13A (green). Kinesin-13A is preferentially localized at the cortical microtubules in pits of the secondary walls (magenta).

Федеральное государственное
бюджетное учреждение науки
Центральный научный центр биологика
Уральского федерального
Российской академии наук (ЦНБ УрО РАН)

IN BRIEF

- Towards Breeding Strong but Fine Cotton Fibers with a Little Help from WLIM1a** 4281
Jennifer Lockhart
- Breaking Down the Complex Regulatory Web Underlying Lignin Biosynthesis** 4282
Jennifer Lockhart
- Small RNAs and the Big Decisions: MicroRNA Regulation of Photoperiodic Flowering in *Brachypodium distachyon*** 4283
Jennifer Mach
- Calmodulin Methylation: Another Layer of Regulation in Calcium Signaling** 4284
Nancy R. Hofmann

LARGE-SCALE BIOLOGY ARTICLES

- Spatio-Temporal Transcript Profiling of Rice Roots and Shoots in Response to Phosphate Starvation and Recovery** [W|OPEN](#) 4285
David Secco, Mehdi Jabnune, Hayden Walker, Huixia Shou, Ping Wu, Yves Poirier, and James Whelan
- Systems-Level Analysis of Nitrogen Starvation-Induced Modifications of Carbon Metabolism in a *Chlamydomonas reinhardtii* Starchless Mutant** [W](#) 4305
Ian K. Blaby, Anne G. Glaesener, Tabea Mettler, Sorel T. Fitz-Gibbon, Sean D. Gallaher, Bensheng Liu, Nanette R. Boyle, Janette Kropat, Mark Stitt, Shannon Johnson, Christoph Benning, Matteo Pellegrini, David Casero, and Sabeeha S. Merchant
- SND1 Transcription Factor-Directed Quantitative Functional Hierarchical Genetic Regulatory Network in Wood Formation in *Populus trichocarpa*** [C|W](#) 4324
Ying-Chung Lin, Wei Li, Ying-Hsuan Sun, Sapna Kumari, Hairong Wei, Quanzi Li, Sermsawat Tunlaya-Anukit, Ronald R. Sederoff, and Vincent L. Chiang
- A Genomics Approach to Deciphering Lignin Biosynthesis in Switchgrass** [W](#) 4342
Hui Shen, Mitra Mazarei, Hiroshi Hisano, Luis Escamilla-Trevino, Chunxiang Fu, Yunqiao Pu, Mary R. Rudis, Yuhong Tang, Xirong Xiao, Lisa Jackson, Guifen Li, Tim Hernandez, Fang Chen, Arthur J. Ragauskas, C. Neal Stewart Jr., Zeng-Yu Wang, and Richard A. Dixon

RESEARCH ARTICLES

- Regulation of *FLOWERING LOCUS T* by a MicroRNA in *Brachypodium distachyon*** [C|W](#) 4363
Liang Wu, Dongfeng Liu, Jiajie Wu, Rongzhi Zhang, Zhengrui Qin, Danmei Liu, Aili Li, Daolin Fu, Wenxue Zhai, and Long Mao

EDITORIAL BOARD**Editor in Chief**

Cathie Martin

Coeditors

Sarah M. Assmann

Jody Banks

Alice Barkan

Sebastian Bednarek

James Birchler

Ulla Bonas

Christopher Bowler

Judy Callis

XiaoFeng Cao

Vincenzo De Luca

Xing Wang Deng

Xinnian Dong

Allan Downie

Alisdair Fernie

Pascal Genschik

Jean T. Greenberg

Thomas Guilfoyle

Herman R. Höfte

David Jackson

Regine Kahmann

Martin Kater

Daniel J. Kliebenstein

Clive Lloyd

William Lucas

Blake Meyers

Ortrun Mittelsten Scheid

Michael Palmgren

Markus Pauly

Scott C. Peck

Barry Pogson

Zhaohui Qin

Karin Schumacher

David Smyth

Chris J. Staiger

Keiko Sugimoto

Managing Editor

Patti Lockhart

Senior Features Editor

Nancy A. Eckardt

Features Editor

Mary Williams

Science Editors

Greg Bertoni

Kathleen L. Farquharson

Nancy R. Hofmann

Jennifer Lockhart

Jennifer M. Mach

Production Manager

Susan L. Entwistle

Manuscript Manager

Annette Kessler

Publications Director

Nancy A. Winchester

Publisher

American Society of

Plant Biologists

Executive Director,

Crispin Taylor

Editorial Office

15501 Monona Drive

Rockville, Maryland 20855-2768

Telephone: 301/296-0908

Fax: 301/279-2996

<http://www.aspb.org>Online at www.plantcell.org

- The Cold Signaling Attenuates HIGH EXPRESSION OF OSMOTICALLY RESPONSIVE GENE1 Activates FLOWERING LOCUS C Transcription via Chromatin Remodeling under Short-Term Cold Stress in *Arabidopsis*** [C](#)[W](#) 4378
Jae-Hoon Jung, Ju-Hyung Park, Sangmin Lee, Taiko Kim To, Jong-Myong Kim, Motoaki Seki, and Chung-Mo Park
- HIGH EXPRESSION OF OSMOTICALLY RESPONSIVE GENES1 Is Required for Circadian Periodicity through the Promotion of Nucleo-Cytoplasmic mRNA Export in *Arabidopsis*** [W](#)[I](#)[O](#)[P](#)[E](#)[N](#) 4391
Dana R. MacGregor, Peter Gould, Julia Foreman, Jayne Griffiths, Susannah Bird, Rhiannon Page, Kelly Stewart, Gavin Steel, Jack Young, Konrad Paszkiewicz, Andrew J. Millar, Karen J. Halliday, Anthony J. Hall, and Steven Penfield
- Blue Light-Dependent Interaction between Cryptochrome2 and CIB1 Regulates Transcription and Leaf Senescence in Soybean** [W](#) 4405
Yingying Meng, Hongyu Li, Qin Wang, Bin Liu, and Chentao Lin
- The Dual Functions of WLIM1a in Cell Elongation and Secondary Wall Formation in Developing Cotton Fibers** [C](#)[W](#) 4421
Li-Bo Han, Yuan-Bao Li, Hai-Yun Wang, Xiao-Min Wu, Chun-Li Li, Ming Luo, Shen-Jie Wu, Zhao-Sheng Kong, Yan Pei, Gai-Li Jiao, and Gui-Xian Xia
- Rho of Plant GTPase Signaling Regulates the Behavior of *Arabidopsis* Kinesin-13A to Establish Secondary Cell Wall Patterns** [W](#) 4439
Yoshihisa Oda and Hiroo Fukuda
- Plastid-Localized Glutathione Reductase2-Regulated Glutathione Redox Status Is Essential for *Arabidopsis* Root Apical Meristem Maintenance** [C](#)[I](#)[W](#) 4451
Xin Yu, Taras Pasternak, Monika Eiblmeier, Franck Ditengou, Philip Kochersperger, Jiaqiang Sun, Hui Wang, Heinz Rennenberg, William Teale, Ivan Paponov, Wenkun Zhou, Chuanyou Li, Xugang Li, and Klaus Palme
- RETINOBLASTOMA-RELATED Protein Stimulates Cell Differentiation in the *Arabidopsis* Root Meristem by Interacting with Cytokinin Signaling** [W](#) 4469
Serena Perilli, José Manuel Perez-Perez, Riccardo Di Mambro, Cristina Llavata Peris, Sara Díaz-Triviño, Marta Del Bianco, Emanuela Pierdonati, Laila Moubayidin, Alfredo Cruz-Ramírez, Paolo Costantino, Ben Scheres, and Sabrina Sabatini
- MICROTUBULE-ASSOCIATED PROTEIN65 Is Essential for Maintenance of Phragmoplast Bipolarity and Formation of the Cell Plate in *Physcomitrella patens*** [C](#)[I](#)[W](#) 4479
Ken Kosetsu, Jeroen de Keijzer, Marcel E. Janson, and Gohta Goshima
- Calmodulin-Mediated Signal Transduction Pathways in *Arabidopsis* Are Fine-Tuned by Methylation** [W](#) 4493
Joydeep Banerjee, Roberta Magnani, Meera Nair, Lynnette M. Dirk, Seth DeBolt, Indu B. Maiti, and Robert L. Houtz
- Comparing the Calcium Binding Abilities of Two Soybean Calmodulins: Towards Understanding the Divergent Nature of Plant Calmodulins** [W](#) 4512
Jessica L. Gifford, Mostafa Jamshidiha, Jeffrey Mo, Hiroaki Ishida, and Hans J. Vogel
- Pollen Tube Growth Regulation by Free Anions Depends on the Interaction between the Anion Channel SLAH3 and Calcium-Dependent Protein Kinases CPK2 and CPK20** [C](#)[I](#)[W](#) 4525
Timo Gutermuth, Roman Lassig, Maria-Teresa Portes, Tobias Maierhofer, Tina Romeis, Jan-Willem Borst, Rainer Hedrich, José A. Feijó, and Kai R. Konrad
- The Actin-Related Protein2/3 Complex Regulates Mitochondrial-Associated Calcium Signaling during Salt Stress in *Arabidopsis*** [C](#)[I](#)[W](#) 4544
Yi Zhao, Zhen Pan, Yan Zhang, Xiaolu Qu, Yuguo Zhang, Yongqing Yang, Xiangning Jiang, Shanjin Huang, Ming Yuan, Karen S. Schumaker, and Yan Guo
- Subchromoplast Sequestration of Carotenoids Affects Regulatory Mechanisms in Tomato Lines Expressing Different Carotenoid Gene Combinations** [C](#)[I](#)[W](#) 4560
Marilise Nogueira, Leticia Mora, Eugenia M.A. Enfissi, Peter M. Bramley, and Paul D. Fraser

- A γ -Glutamyl Cyclotransferase Protects *Arabidopsis* Plants from Heavy Metal Toxicity by Recycling Glutamate to Maintain Glutathione Homeostasis** [C](#)[W](#) 4580
Bibin Paulose, Sudesh Chhikara, Joshua Coomey, Ha-il Jung, Olena Vatamaniuk, and Om Parkash Dhankher
- A BAR-Domain Protein SH3P2, Which Binds to Phosphatidylinositol 3-Phosphate and ATG8, Regulates Autophagosome Formation in *Arabidopsis*** [C](#)[W](#) 4596
Xiaohong Zhuang, Hao Wang, Sheung Kwan Lam, Caiji Gao, Xiangfeng Wang, Yi Cai, and Liwen Jiang
- Catalase and *NO CATALASE ACTIVITY1* Promote Autophagy-Dependent Cell Death in *Arabidopsis*** [C](#)[W](#)[I](#)[O](#)[P](#)[E](#)[N](#) 4616
Thomas Hackenberg, Trine Juul, Aija Auzina, Sonia Gwizdź, Anna Małolepszy, Katrien Van Der Kelen, Svend Dam, Simon Bressendorff, Andrea Lorentzen, Peter Roepstorff, Kåre Lehmann Nielsen, Jan-Elo Jørgensen, Daniel Hofius, Frank Van Breusegem, Morten Petersen, and Stig Uggerhøj Andersen
- Arabidopsis* 56-Amino Acid Serine Palmitoyltransferase-Interacting Proteins Stimulate Sphingolipid Synthesis, Are Essential, and Affect Mycotoxin Sensitivity** [W](#)[I](#)[O](#)[P](#)[E](#)[N](#) 4627
Athen N. Kimberlin, Saurav Majumder, Gongshe Han, Ming Chen, Rebecca E. Cahoon, Julie M. Stone, Teresa M. Dunn, and Edgar B. Cahoon
- Gene Coexpression Analysis Reveals Complex Metabolism of the Monoterpene Alcohol Linalool in *Arabidopsis* Flowers** [W](#)[I](#)[O](#)[P](#)[E](#)[N](#) 4640
Jean-François Ginglinger, Benoit Boachon, René Höfer, Christian Paetz, Tobias G. Köllner, Laurence Miesch, Raphael Luga, Raymonde Baïtenweck, Jérôme Mutterer, Pascaline Ullmann, Franziska Beran, Patricia Claudel, Francel Verstappen, Marc J.C. Fischer, Francis Karst, Harro Bouwmeester, Michel Miesch, Bernd Schneider, Jonathan Gershenzon, Jürgen Ehling, and Danièle Werck-Reichhart
- MAIGO5 Functions in Protein Export from Golgi-Associated Endoplasmic Reticulum Exit Sites in *Arabidopsis*** [W](#) 4658
Junpei Takagi, Luciana Renna, Hideyuki Takahashi, Yasuko Koumoto, Kentaro Tamura, Giovanni Stefano, Yoichiro Fukao, Maki Kondo, Mikio Nishimura, Tomoo Shimada, Federica Brandizzi, and Ikuko Hara-Nishimura
- Endoplasmic Reticulum Glucosidases and Protein Quality Control Factors Cooperate to Establish Biotrophy in *Ustilago maydis*** [W](#) 4676
Alfonso Fernández-Álvarez, Alberto Elías-Villalobos, Alberto Jiménez-Martín, Miriam Marín-Menguiano, and José I. Ibeas
- Two *Rumex* Species from Contrasting Hydrological Niches Regulate Flooding Tolerance through Distinct Mechanisms** [C](#)[W](#)[I](#)[O](#)[P](#)[E](#)[N](#) 4691
Hans van Veen, Angelika Muströph, Gregory A. Barding, Marleen Vergeer-van Eijk, Rob A.M. Welschen-Evertman, Ole Pedersen, Eric J.W. Visser, Cynthia K. Larive, Ronald Pierik, Julia Bailey-Serres, Laurentius A.C.J. Voesenek, and Rashmi Sasidharan
- The *Arabidopsis* NAC Transcription Factor ANAC096 Cooperates with bZIP-Type Transcription Factors in Dehydration and Osmotic Stress Responses** [W](#) 4708
Zheng-Yi Xu, Soo Youn Kim, Do Young Hyeon, Dae Heon Kim, Ting Dong, Youngmin Park, Jing Bo Jin, Se-Hwan Joo, Seong-Ki Kim, Jong Chan Hong, Daehee Hwang, and Inhwan Hwang
- Jumonji C Domain Protein JM705-Mediated Removal of Histone H3 Lysine 27 Trimethylation Is Involved in Defense-Related Gene Activation in Rice** [C](#)[W](#) 4725
Tiantian Li, Xiangsong Chen, Xiaochao Zhong, Yu Zhao, Xiaoyun Liu, Shaoli Zhou, Saifeng Cheng, and Dao-Xiu Zhou
- Two Herbivore-Induced Cytochrome P450 Enzymes CYP79D6 and CYP79D7 Catalyze the Formation of Volatile Aldoximes Involved in Poplar Defense** [C](#)[W](#) 4737
Sandra Irmisch, Andrea Clavijo McCormick, G. Andreas Boeckler, Axel Schmidt, Michael Reichelt, Bernd Schneider, Katja Block, Jörg-Peter Schnitzler, Jonathan Gershenzon, Sybille B. Unsicker, and Tobias G. Köllner

Simon C. Groen, Noah K. Whiteman, Adam K. Bahrami, Amity M. Wilczek, Jianping Cui, Jacob A. Russell, Angelica Cibrian-Jaramillo, Ian A. Butler, Jignasha D. Rana, Guo-Hua Huang, Jenifer Bush, Frederick M. Ausubel, and Naomi E. Pierce

CORRECTION

Wydro, M.M., Sharma, P., Foster, J.M., Bych, K., Meyer, E.H., and Balk, J. (2013). The Evolutionarily Conserved Iron-Sulfur Protein INDH1 Is Required for Complex I Assembly and Mitochondrial Translation in *Arabidopsis*. *Plant Cell* 25: 4014–4027.

4767

Some figures in this article are displayed in color online but in black and white in the print edition.

Online version contains Web-only data.

Articles can be viewed online without a subscription.



© 2013 American Society of Plant Biologists. All rights reserved. Printed on acid-free paper effective with Volume 1, Number 1, January 1989. Printed in the United States of America.

The Plant Cell (ISSN 1040-4651, online ISSN 1532-298X) is published monthly (one volume per year) by the American Society of Plant Biologists, 15501 Monona Drive, Rockville, MD 20855-2768, and is produced by Dartmouth Journal Services, Waterbury, VT. The institutional price for the print and online versions is based on type of institution; contact institution@aspb.org. A subscription includes both *The Plant Cell* and *Plant Physiology*; single copies may be purchased for \$95 each, plus \$10 shipping (U.S.) or \$12 (outside U.S.). Members of the American Society of Plant Biologists may subscribe to *The Plant Cell* for \$185. Nonmember individuals may subscribe for \$375. For matters regarding subscriptions, contact Suzanne Cholwek, ASPB, 15501 Monona Drive, Rockville, MD 20855-2768; telephone 301/296-0926; fax 301/251-6740; e-mail scholwek@aspb.org. Notify ASPB in writing within 3 months (domestic) or 6 months (foreign) of issue date, and defective copies or copies lost in the mail will be replaced. Send all inquiries regarding display advertising to FASEB AdNet, 9650 Rockville Pike, Bethesda, MD 20814-3998; telephone 301/634-7791; fax 301/634-7153; e-mail adnet@faseb.org. Periodicals postage paid at Rockville, MD 20850, and at additional mailing offices.

Postmaster: Send address changes to *The Plant Cell*, American Society of Plant Biologists, 15501 Monona Drive, Rockville, MD 20855-2768. The online version of *The Plant Cell* is available at www.plantcell.org.

Permission to Reprint: Permission to make digital or hard copies of part or all of a work published in *The Plant Cell* is granted without fee for personal or classroom use provided that copies are not made or distributed for profit or commercial advantage and that copies bear the full citation and the following notice on the first page: "Copyright American Society of Plant Biologists." For all other kinds of copying, request permission in writing from Nancy A. Winchester, Publications Director, ASPB headquarters.