

**Polymer Vol. 54, No. 5, 28 February 2013**

**Contents**

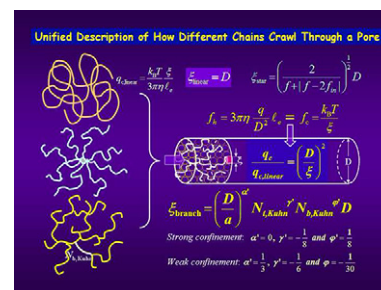
**POLYMER COMMUNICATION**

**Unified description of transportation of polymer chains with different topologies through a small cylindrical pore** pp 1463–1465

Chi Wu<sup>a,b,\*</sup>, Lianwei Li<sup>b</sup>

<sup>a</sup> Department of Chemistry, The Chinese University of Hong Kong, Shatin N. T., Hong Kong

<sup>b</sup> Hefei National Laboratory for Physical Sciences at Microscale, Department of Chemical Physics, University of Science and Technology of China, Hefei 230026, China



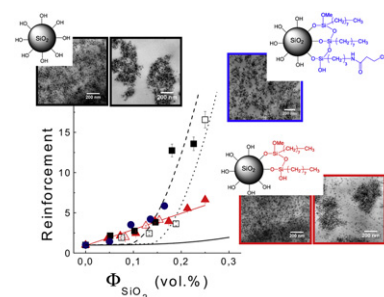
**POLYMER PAPERS**

**Mechanical reinforcement in model elastomer nanocomposites with tuned microstructure and interactions** pp 1466–1479

David Le Strat<sup>a</sup>, Florent Dalmas<sup>a,\*</sup>, Solo Randriamahefa<sup>a</sup>, Jacques Jestin<sup>b</sup>, Véronique Wintgens<sup>a</sup>

<sup>a</sup> ICMPE (Institut de Chimie et des Matériaux Paris-Est), UMR 7182 CNRS, Université Paris-Est Créteil, 2-8 rue Henri Dunant, 94320 Thiais, France

<sup>b</sup> LLB (Laboratoire Léon Brillouin), CEA Saclay 91191 Gif-sur-Yvette Cedex, France



### Synthesis, characterization (molecular–morphological) and theoretical morphology predictions of linear triblock terpolymers containing poly(cyclohexadiene)

pp 1480–1489

K. Misichronis<sup>a</sup>, S. Rangou<sup>a,f</sup>, E. Ashcraft<sup>b</sup>, R. Kumar<sup>c</sup>, M. Dadmun<sup>b</sup>, B.G. Sumpter<sup>d,e</sup>, N.E. Zafeiropoulos<sup>a</sup>, J.W. Mays<sup>b</sup>, A. Avgeropoulos<sup>a,\*</sup>

<sup>a</sup> Polymers Laboratory, Department of Materials Science Engineering, University of Ioannina, University Campus, 45110 Ioannina, Greece

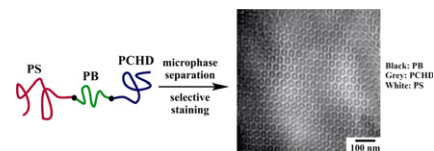
<sup>b</sup> Department of Chemistry, University of Tennessee at Knoxville, Knoxville, TN 37996, USA

<sup>c</sup> National Center for Computational Sciences, Oak Ridge National Laboratory, Oak Ridge, TN 37831, USA

<sup>d</sup> Computer Science and Mathematics Division, Oak Ridge National Laboratory, Oak Ridge, TN 37831, USA

<sup>e</sup> Center for Nanophase Materials Sciences, Oak Ridge National Laboratory, Oak Ridge, TN 37831, USA

<sup>f</sup> Helmholtz-Zentrum Geesthacht, Institute of Polymer Research, Max-Planck-Str. 1, 21502 Geesthacht, Germany



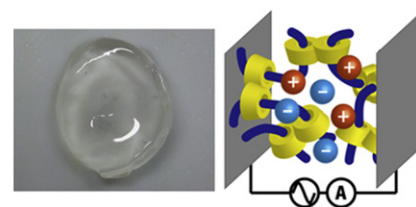
### Ionic conduction of slide-ring gel swollen with ionic liquids

pp 1490–1496

Takao Moriyasu<sup>a</sup>, Takuma Sakamoto<sup>a</sup>, Naoki Sugihara<sup>a</sup>, Yukie Sasa<sup>a</sup>, Yutaka Ota<sup>a</sup>, Takeshi Shimomura<sup>a,\*</sup>, Yasuhiro Sakai<sup>b</sup>, Kohzo Ito<sup>b</sup>

<sup>a</sup> Graduate School of Bio-Applications and Systems Engineering, Tokyo University of Agriculture and Technology, Koganei, Tokyo 184-8588, Japan

<sup>b</sup> Graduate School of Frontier Sciences, The University of Tokyo, Kashiwa, Chiba 277-8561, Japan



### Unusual crystals of poly( $\epsilon$ -caprolactone) by unusual crystallisation: The effects of rapid cooling and fast solvent loss on the morphology, crystal structure and melting

pp 1497–1503

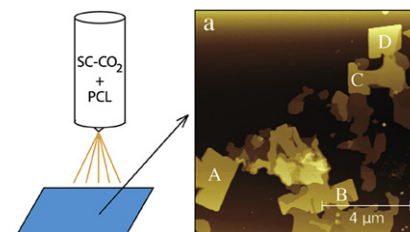
N. Sanandaji<sup>a</sup>, L. Ovaskainen<sup>a</sup>, M. Klein Gunnewiek<sup>b</sup>, G.J. Vancso<sup>b</sup>, M.S. Hedenqvist<sup>a</sup>, S. Yu<sup>c</sup>, L. Eriksson<sup>d</sup>, S.V. Roth<sup>c</sup>, U.W. Gedde<sup>a,\*</sup>

<sup>a</sup> KTH Royal Institute of Technology, School of Chemical Science and Engineering, Fibre and Polymer Technology, SE-100 44 Stockholm, Sweden

<sup>b</sup> Materials Science and Technology of Polymers, University of Twente, NL-7500 AE Enschede, The Netherlands

<sup>c</sup> HASYLAB-DESY, Notkestr. 85, DE-22607 Hamburg, Germany

<sup>d</sup> Materials and Environmental Chemistry, Arrhenius Laboratory, Stockholm University, SE-106 91 Stockholm, Sweden

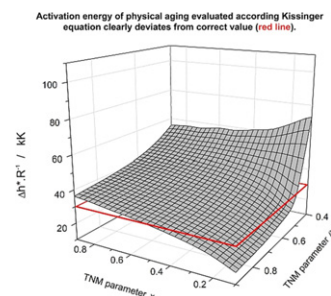


### Glass transition in polymers: (In)correct determination of activation energy

pp 1504–1511

Roman Svoboda<sup>\*</sup>, Jiří Málek

University of Pardubice, Faculty of Chemical Technology, Department of Physical Chemistry, Studentska 573, 532 10 Pardubice, Czech Republic

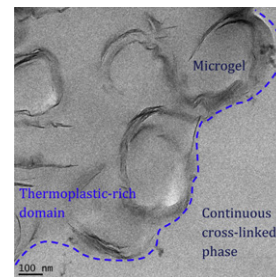


**In situ polymerization of polyester-based hybrid systems for the preparation of clay nanocomposites**

pp 1512–1523

S. Chaichian, P.M. Wood-Adams\*, S.V. Hoa

Center for Applied Research on Polymers and Composites (CREPEC), Department of Mechanical and Industrial Engineering, Concordia University, 1455 de Maisonneuve Boulevard West, EV004.251, Montreal, Quebec, Canada H3G 1M8



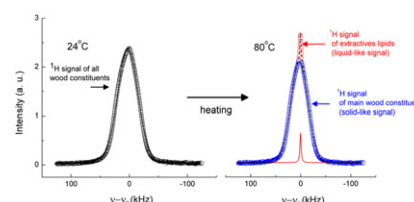
**NMR detection of liquid-like wood polymer component in dry aspen wood**

pp 1524–1529

Hartwig Peemoeller<sup>a,\*</sup>, Wladyslaw P. Weglarz<sup>a</sup>, M. Jason Hinek<sup>a</sup>, Rick Holly<sup>a</sup>, Claude Lemaire<sup>a</sup>, Roshanak Teymoori<sup>a,3</sup>, Jianzhen Liang<sup>a</sup>, Joshua Crone<sup>a</sup>, Firas K. Mansour<sup>a</sup>, Ian D. Hartley<sup>b</sup>

<sup>a</sup> Department of Physics and Astronomy, University of Waterloo, 200 University Avenue, Waterloo, Ontario N2L 3G1, Canada

<sup>b</sup> Ecosystem Science and Management Program, University of Northern British Columbia, 3333 University Way, Prince George, British Columbia V2N 4Z9, Canada

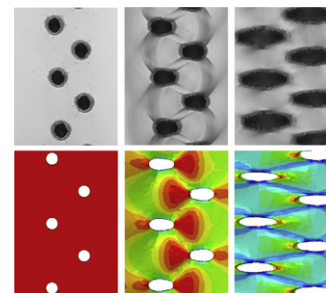


**Plane stress local failure criterion for polycarbonate containing laser drilled microvoids**

pp 1530–1537

Trevor Meunier, Sai Gautam Gopalakrishnan, A. Weck\*

Mechanical Engineering Department, University of Ottawa, Ottawa, Ontario, Canada K1N6N5

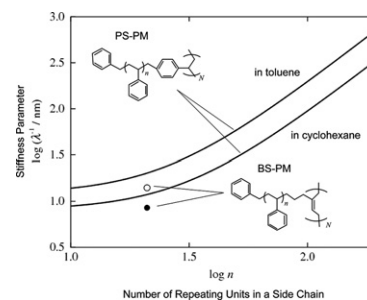


**Dilute solution properties of polymacromonomer consisting of polybutadiene backbone and polystyrene side chains**

pp 1538–1542

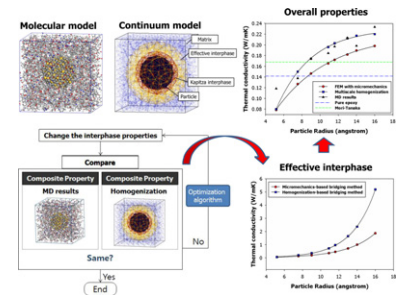
Yuji Hatanaka, Yo Nakamura\*

Department of Polymer Chemistry, Kyoto University, Katsura, Kyoto 615-8510, Japan



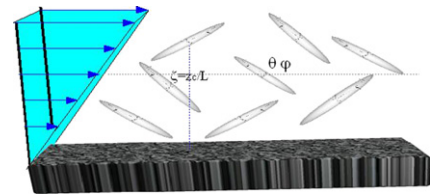
## Multiscale homogenization modeling for thermal transport properties of polymer nanocomposites with Kapitza thermal resistance

pp 1543–1554

Hyunseong Shin<sup>a</sup>, Seunghwa Yang<sup>b</sup>, Seongmin Chang<sup>a</sup>, Suyoung Yu<sup>a</sup>, Maenghyo Cho<sup>a,\*</sup><sup>a</sup>WCU Multiscale Mechanical Design Division, School of Mechanical and Aerospace Engineering, Seoul National University, San 56-1, Shillim-Dong, Kwanak-Ku, Seoul 151-742, South Korea<sup>b</sup>Department of Mechanical Engineering, Dong-A University, 550 Kil, Nakdongdae-Ro, Saha-Ku, Busan 604-714, South Korea

## Three-dimensional simulations for the dynamics of dilute colloidal suspensions of ellipsoidal-like particles flowing in the bulk and near solid boundaries

pp 1555–1566

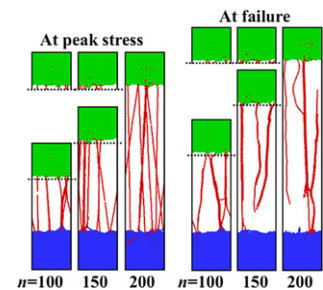
Ali Atwi<sup>a,b,\*</sup>, Antoine Khater<sup>a</sup>, Abbas Hijazi<sup>b</sup><sup>a</sup>Institut des Molécules et Matériaux du Mans (IMMM, UMR6283), Université du Maine, F-72085 Le Mans, France<sup>b</sup>Département de Physique, Faculté des Sciences I, Université Libanaise, Hadath-Beirut, Lebanon

## Polymer–polymer adhesion with mobile promoters: Connector length dependence

pp 1567–1572

Bin Zhang

State Key Laboratory of Mechanics and Control of Mechanical Structures, and College of Aerospace Engineering, Nanjing University of Aeronautics and Astronautics, Nanjing 210016, China



**OTHER CONTENT**

---

**Calendar**

---

\*Corresponding author

---

Available online at [www.sciencedirect.com](http://www.sciencedirect.com)

**SciVerse ScienceDirect**

Full text of this journal is available, on-line from **SciVerse ScienceDirect**. Visit [www.sciencedirect.com](http://www.sciencedirect.com) for more information.

---

Abstracted/indexed in: AGRICOLA, Beilstein, BIOSIS Previews, CAB Abstracts, Chemical Abstracts, Current Contents: Life Sciences, Current Contents: Physical, Chemical and Earth Sciences, Current Contents Search, Derwent Drug File, Ei compendex, EMBASE/ Excerpta Medica, Medline, PASCAL, Research Alert, Science Citation Index, SciSearch. Also covered in the abstract and citation database Sciverse SCOPUS®. Full text available on Sciverse ScienceDirect®

---



ELSEVIER

ISSN 0032-3861

**Author Index**

- Ashcraft, E. 1480  
Atwi, A. 1555  
Avgeropoulos, A. 1480
- Chaeichian, S. 1512  
Chang, S. 1543  
Cho, M. 1543  
Crone, J. 1524
- Dadmun, M. 1480  
Dalmas, F. 1466
- Eriksson, L. 1497
- Gedde, U. W. 1497  
Gopalakrishnan, S. G. 1530
- Hartley, I. D. 1524  
Hatanaka, Y. 1538  
Hedenqvist, M. S. 1497  
Hijazi, A. 1555  
Hinek, M. J. 1524  
Hoa, S. V. 1512  
Holly, R. 1524
- Ito, K. 1490
- Jestin, J. 1466
- Khater, A. 1555  
Klein Gunnewiek, M. 1497  
Kumar, R. 1480
- Le Strat, D. 1466  
Lemaire, C. 1524  
Li, L. 1463  
Liang, J. 1524
- Málek, J. 1504  
Mansour, F. K. 1524  
Mays, J. W. 1480  
Meunier, T. 1530  
Misichronis, K. 1480  
Moriyasu, T. 1490
- Nakamura, Y. 1538
- Ota, Y. 1490  
Ovaskainen, L. 1497
- Peemoeller, H. 1524
- Randriamahefa, S. 1466  
Rangou, S. 1480
- Roth, S. V. 1497  
Sakai, Y. 1490  
Sakamoto, T. 1490  
Sanandaji, N. 1497  
Sasa, Y. 1490  
Shimomura, T. 1490  
Shin, H. 1543  
Sugihara, N. 1490  
Sumpter, B. G. 1480  
Svoboda, R. 1504
- Teymoori, R. 1524
- Vancso, G. J. 1497
- Weck, A. 1530  
Weglarz, W. P. 1524  
Wintgens, V. 1466  
Wood-Adams, P. M. 1512  
Wu, C. 1463
- Yang, S. 1543  
Yu, S. 1497, 1543
- Zafeiropoulos, N. E. 1480  
Zhang, B. 1567