


771
pg7/g

pure and applied geophysics

Vol. 170
No. 12
pp. 2021–2382
2013
ISSN 0033-4553

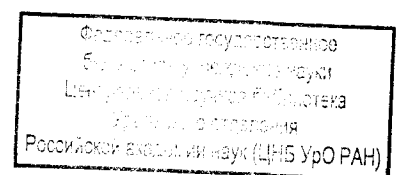
pageoph

 Birkhäuser

Pure and Applied Geophysics

Volume 170 · Number 12 · December 2013

- 2021 **Seismic Rheological Model and Reflection Coefficients of the Brittle–Ductile Transition**
J.M. Carcione · F. Poletto
- 2037 **3D Crustal and Lithospheric Structures in the Southeastern Mediterranean and Northeastern Egypt**
S. Saleh
- 2075 **2D Laplace-Domain Waveform Inversion of Field Data Using a Power Objective Function**
E. Park · W. Ha · W. Chung · C. Shin · D.-J. Min
- 2087 **Attenuation Tomography Based on Strong Motion Data: Case Study of Central Honshu Region, Japan**
P. Kumar · A. Joshi · O.P. Verma
- 2107 **Spectral Ratio Estimates for Site Effects on the Horst–Graben System in West Turkey**
N. Akyol · T.Ö. Kurtulmuş · M. Çamyıldız · T. Güngör
- 2127 **Estimation of Strong Ground Motion from a Great Earthquake Mw 8.5 in Central Seismic Gap Region, Himalaya (India) Using Empirical Green's Function Technique**
B. Sharma · S. Chopra · A.K. Sutar · B.K. Bansal
- 2139 **A New Insight into Probabilistic Seismic Hazard Analysis for Central India**
H.S. Mandal · A.K. Shukla · P.K. Khan · O.P. Mishra
- 2163 **Relative Motion Between the Rivera and North American Plates Determined from the Slip Directions of Earthquakes**
G. Suárez · S.H. Jaramillo · W.L. Bandy
- 2173 **Power-Law Testing for Fault Attributes Distributions**
D. Kolyukhin · A. Torabi
- 2185 **Crustal Structure of the Flood Basalt Province of Ethiopia from Constrained 3-D Gravity Inversion**
T. Mammo
- 2207 **2.5-D Gravity/Magnetic Model Studies in Sahl El Qaa Area, Southwestern Sinai, Egypt**
A.A. Azab · A.A. El-Khadragy
- 2231 **Resistivity Structure of the Central Indian Tectonic Zone (CITZ) from Multiple Magnetotelluric (MT) Profiles and Tectonic Implications**
K.K. Abdul Azeez · M.J. Unsworth · P.K. Patro · T. Harinarayana · R.S. Sastry



- 2257 Time-Domain Spectral Induced Polarization Based on Pseudo-random Sequence**
M. Li · W. Wei · W. Luo · Q. Xu
- 2263 Monitoring Heat Losses Using Landsat ETM + Thermal Infrared Data: a Case Study in Unzen Geothermal Field, Kyushu, Japan**
Md.B. Mia · C.J. Bromley · Y. Fujimitsu
- 2273 Sea Ice Dynamics Induced by External Stochastic Fluctuations**
D.V. Alexandrov · I.A. Bashkirtseva · A.P. Malygin · L.B. Ryashko
- 2283 A Comparative Study of Radiation Fog and Quasi-Fog Formation Processes During the ParisFog Field Experiment 2007**
M. Haeffelin · J.-C. Dupont · N. Boyouk · D. Baumgardner · L. Gomes · G. Roberts · T. Elias
- 2305 Observed and Forecasted Intraseasonal Activity of Southwest Monsoon Rainfall over India During 2010, 2011 and 2012**
D.R. Pattanaik · L.S. Rathore · A. Kumar
- 2329 Improvement of Monsoon Depressions Forecast with Assimilation of Indian DWR Data Using WRF-3DVAR Analysis System**
A. Routray · U.C. Mohanty · K.K. Osuri · S. Kiran Prasad
- 2351 Predictability of Indian Monsoon Circulation with High Resolution ECMWF Model in the Perspective of Tropical Forecast During the Tropical Convection Year 2008**
S. De · A.K. Sahai
- 2369 Impact of South China Sea Cold Surges and Typhoon Peipah on Initiating Cyclone Sidr in the Bay of Bengal**
N.K. Vissa · A.N.V. Satyanarayana · B.P. Kumar

Further articles can be found at link.springer.com

Instructions for Authors for *Pure Appl. Geophys.* are available at www.springer.com/00024