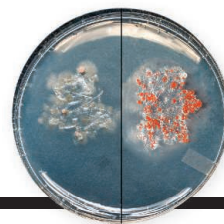


CONTENTS



862

Living on lanthanides

22 MAY 2015 • VOLUME 348 • ISSUE 6237

NEWS

IN BRIEF

842 Roundup of the week's news

IN DEPTH

844 LEAF BACTERIA FERTILIZE TREES, RESEARCHERS CLAIM

Free-living nitrogen fixers defy textbooks and could boost crop production *By E. Pennisi*

845 ALARM OVER A SINKING DELTA

Rise and Fall project seeks ways to slow land subsidence in Vietnam's populous Mekong delta *By C. Schmidt*

846 CANADIAN REGISTRY TO TRACK THOUSANDS OF POT SMOKERS

Data could answer questions about safety, efficacy, and dosage *By L. Wade*

847 ANCIENT DNA PINPOINTS PALEOLITHIC LIAISON IN EUROPE

Romanian fossil was the great-great-grandson of a Neandertal—but an evolutionary dead end *By A. Gibbons*

848 E.U. COMMISSION PROMISES TO LISTEN TO SCIENTISTS

Panel of seven top scientists to act as watchdog of new advice system *By T. Rabesandratana*

849 'REJUVENATING' PROTEIN DOUBTED

Factor reported to explain how young blood restores muscle has opposite effect in another lab *By J. Kaiser*

FEATURES

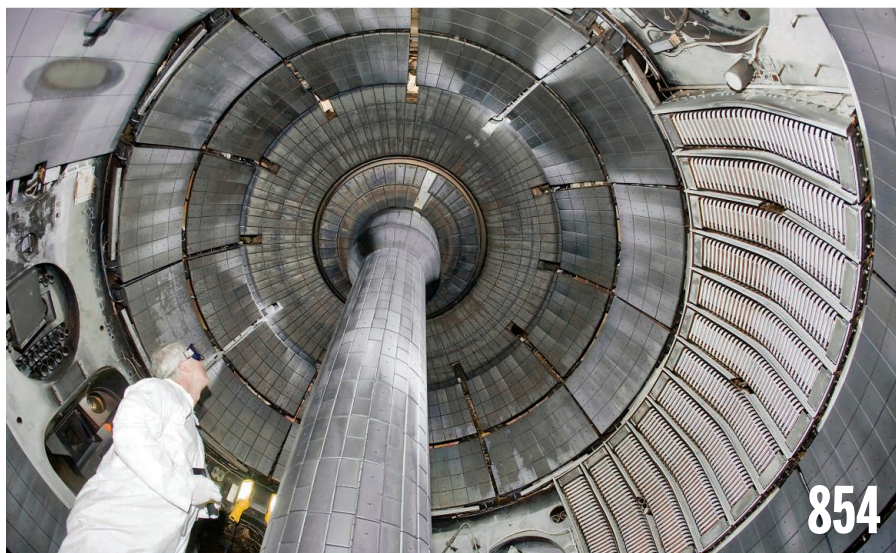
850 THE DRUG PUSH

As fears of drug-resistant bacteria loom, governments try to coax companies back to the field *By K. Servick*

854 THE NEW SHAPE OF FUSION

After decades of slow progress with doughnut-shaped reactors, magnetic fusion labs are gambling on a redesign *By D. Clery*

▶ VIDEO



INSIGHTS

PERSPECTIVES

858 DEBATING A TESTOSTERONE "SEX GAP"

Policies unfairly exclude some women athletes from competition *By K. Karkazis and R. Jordan-Young*

▶ PODCAST

860 READING THE MIND TO MOVE THE BODY

Decoding neural signals of intention and movement should guide the development of neural prosthetics *By J. A. Pruszynski and J. Diedrichsen*

▶ REPORT P. 906

862 JUST ADD LANTHANIDES

Some methanol-using bacteria may depend on lanthanide elements for carbon capture and energy generation *By E. Skovran and N. C. Martinez-Gomez*

863 STREAMLINING AMINE SYNTHESIS

Bulky amine groups that help make many drugs more bioavailable can be added readily to organic compounds *By L. Kürti*

▶ RESEARCH ARTICLE P. 886

865 UNCOVERING HIDDEN WORLDS OF OCEAN BIODIVERSITY

A 3-year expedition yields a treasure trove of data on microorganisms and small animals in the world's oceans *By E. V. Armbrust and S. R. Palumbi*

▶ TARA OCEANS SECTION P. 873

867 PREPROCANCER

Normal skin harbors cancer-causing mutations *By D. E. Brash*

▶ RESEARCH ARTICLE P. 880

BOOKS ET AL.

869 FATAL ISOLATION

By R. C. Keller, reviewed by L. Stark

870 LIFE IN OUR PHAGE WORLD

By F. Rohwer et al., reviewed by M. Koeris

870 PLANKTON

By C. Sardet

▶ TARA OCEANS SECTION P. 873

LETTERS

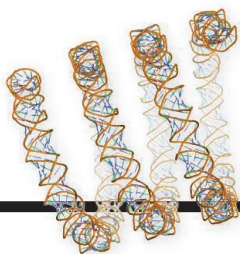
871 EUGENICS LURK IN THE SHADOW OF CRISPR

By R. Pollack

871 CARNIVORE COEXISTENCE: WILDERNESS NOT REQUIRED

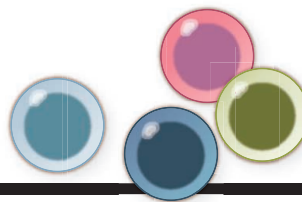
By J. V. López-Bao et al.

Science Staff	838
New Products	927
Science Careers	928



914

A-form DNA can stand the heat



879

Innate lymphoid cells have diverse functions

**872 OUTSIDE THE TOWER:
HONING THE CLIMATE CHANGE MESSAGE**

By B. Xue

872 TECHNICAL COMMENT ABSTRACTS

RESEARCH

IN BRIEF

876 From *Science* and other journals

REVIEW

879 INNATE LYMPHOID CELLS

Innate lymphoid cells: A new paradigm in immunology *G. Eberl et al.*

REVIEW SUMMARY; FOR FULL TEXT:
dx.doi.org/10.1126/science.aaa6566

RESEARCH ARTICLES

880 TUMOR EVOLUTION

High burden and pervasive positive selection of somatic mutations in normal human skin *I. Martincorena et al.*

► PERSPECTIVE P. 867

886 ORGANIC CHEMISTRY

Practical olefin hydroamination with nitroarenes *J. Gui et al.*

► PERSPECTIVE P. 863

REPORTS

892 PLANETARY SCIENCE

Low-altitude magnetic field measurements by MESSENGER reveal Mercury's ancient crustal field *C. L. Johnson et al.*

895 CARBON CYCLE

The dominant role of semi-arid ecosystems in the trend and variability of the land CO₂ sink *A. Ahlström et al.*

899 GLACIER MASS LOSS

Dynamic thinning of glaciers on the Southern Antarctic Peninsula *B. Wouters et al.*

903 SANITATION SUBSIDIES

Encouraging sanitation investment in the developing world: A cluster-randomized trial *R. Guiteras et al.*

906 NEUROPHYSIOLOGY

Decoding motor imagery from the posterior parietal cortex of a tetraplegic human *T. Aflalo et al.*

► PERSPECTIVE P. 860

910 EPIGENETICS

Multiplex single-cell profiling of chromatin accessibility by combinatorial cellular indexing *D. A. Cusanovich et al.*

914 VIROLOGY

A virus that infects a hyperthermophile encapsidates A-form DNA *F. DiMaio et al.*

917 RNA STRUCTURE

Structure of the HIV-1 RNA packaging signal *S. C. Keane et al.*

921 EVOLUTION

Systematic humanization of yeast genes reveals conserved functions and genetic modularity *A. H. Kachroo et al.*



DEPARTMENTS

841 EDITORIAL

Oceans and Earth's habitability *By Marcia McNutt*

► TARA OCEANS SECTION P. 873

938 WORKING LIFE

Playing the field *By Gretchen Meyer*

SPECIAL SECTION

Tara Oceans

INTRODUCTION

873 *Tara* Oceans studies plankton at planetary scale *P. Bork et al.*

RESEARCH ARTICLE ABSTRACTS

874 Eukaryotic plankton diversity in the sunlit ocean *C. de Vargas et al.*

Structure and function of the global ocean microbiome *S. Sunagawa et al.*

Patterns and ecological drivers of ocean viral communities *J. R. Brum et al.*

Determinants of community structure in the global plankton interactome *G. Lima-Mendez et al.*

Environmental characteristics of Agulhas rings affect interocean plankton transport *E. Villar et al.*

SEE ALSO

► EDITORIAL P. 841 ► PERSPECTIVE P. 865
► BOOKS ET AL. P. 870

ON THE COVER



Various species of plankton. Using the research vessel *Tara*, the *Tara* Oceans expedition sampled plankton ecosystems around the world and collected associated oceanographic

data. The wet part of the expedition was accompanied by an integrative analysis on land, incorporating DNA sequencing and bioinformatics, microscopic imaging, and network analysis. See pages 841, 865, 870, and 873. *Photos: C. Sardet/CNRS/Tara Oceans/Plankton Chronicles/Plankton: Wonders of the Drifting World*

SCIENCE (ISSN 0036-8075) is published weekly on Friday, except the last week in December, by the American Association for the Advancement of Science, 1200 New York Avenue, NW, Washington, DC 20005. Periodicals mail postage (publication No. 484460) paid at Washington, DC, and additional mailing offices. Copyright © 2015 by the American Association for the Advancement of Science. The title SCIENCE is a registered trademark of the AAAS. Domestic individual membership and subscription (51 issues): \$153 (\$74 allocated to subscription). Domestic institutional subscription (51 issues): \$1282. Foreign postage extra: Mexico, Caribbean (surface mail) \$55; other countries (air assist delivery) \$85. First class, airmail, student, and emeritus rates on request. Canadian rates with GST available upon request. GST #R1254 88122. Publications Mail Agreement Number 1069624. Printed in the U.S.A. Change of address: Allow 4 weeks, giving old and new addresses and 8-digit account number. Postmaster: Send change of address to AAAS, P.O. Box 96178, Washington, DC 20090-6178. Single-copy sales: \$10.00 current issue, \$15.00 back issue prepaid includes surface postage; bulk rates on request. Authorization to photocopy material for internal or personal use under circumstances not falling within the fair use provisions of the Copyright Act is granted by AAAS to libraries and other users registered with the Copyright Clearance Center (CCC) Transactional Reporting Service, provided that \$30.00 per article is paid directly to CCC, 222 Rosewood Drive, Danvers, MA 01923. The identification code for Science is 0036-8075. Science is indexed in the Reader's Guide to Periodical Literature and in several specialized indexes.