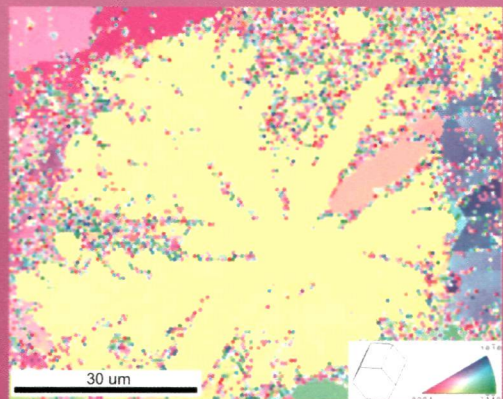
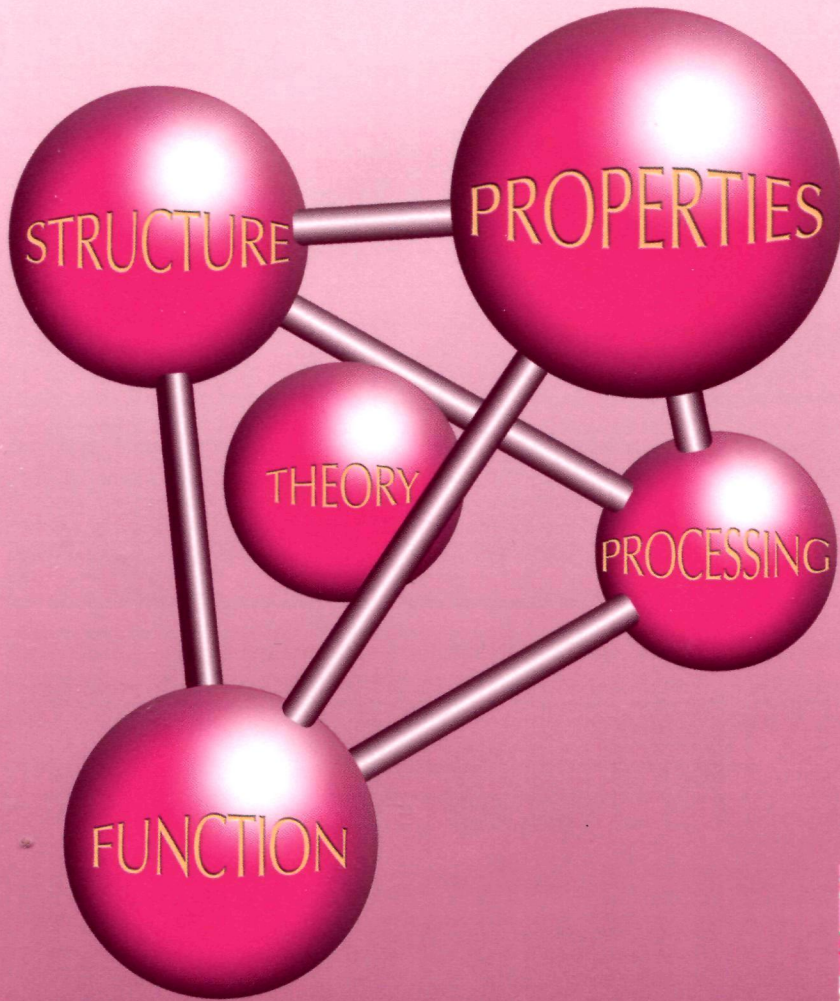




# *Scripta* MATERIALIA

A LETTERS JOURNAL



# Scripta MATERIALIA

Volume 68, Issue 5  
(Published 14 December 2012)

## CONTENTS

	223	2013 Acta Materialia Gold Medal Award
N. Warthi, P. Ghosh & A.H. Chokshi	225	Approaching theoretical strengths by synergistic internal and external size refinement
H.-Y. Wang, E.-S. Xue, X.-L. Nan, T. Yue, Y.-P. Wang & Q.-C. Jiang	229	Influence of grain size on strain rate sensitivity in rolled Mg–3Al–3Sn alloy at room temperature
M. Tzedaki, M. Galceran, S. Turner, S. Godet, I. De Graeve, B. Kernig, J. Hasenclever & H. Terry	233	Structure and formation mechanism of rolled-in oxide areas on aluminum lithographic printing sheets
J.H. Park, J.K. Kim, B.H. Lee, S.S. Kim & K.Y. Kim	237	Three-dimensional atom probe analysis of intergranular segregation and precipitation behavior in Ti–Nb-stabilized low-Cr ferritic stainless steel
T.-C. Liu, C.-M. Liu, Y.-S. Huang, C. Chen & K.-N. Tu	241	Eliminate Kirkendall voids in solder reactions on nanotwinned copper
S.-H. Joo, J.K. Lee, J.-M. Koo, S. Lee, D.-W. Suh & H.S. Kim	245	Method for measuring nanoscale local strain in a dual phase steel using digital image correlation with nanodot patterns
S. Wang, K. Takahashi, N. Hashimoto, S. Isobe & S. Ohnuki	249	Strain field of interstitial hydrogen atom in body-centered cubic iron and its effect on hydrogen–dislocation interaction
S. Ii, K. Hirayama, K. Matsunaga, H. Fujii & S. Tsurekawa	253	Direct measurement of local magnetic moments at grain boundaries in iron
X. Hui, D.Y. Lin, X.H. Chen, W.Y. Wang, Y. Wang, S.L. Shang & Z.K. Liu	257	Structural mechanism for ultrahigh-strength Co-based metallic glasses
J. Lian, S.-W. Lee, L. Valdevit, M.I. Baskes & J.R. Greer	261	Emergence of film-thickness- and grain-size-dependent elastic properties in nanocrystalline thin films
L.L. Zheng, Y.F. Gao, Y.D. Wang, A.D. Stoica, K. An & X.L. Wang	265	Grain orientation dependence of lattice strains and intergranular damage rates in polycrystals under cyclic loading
S. Malekjani, P.D. Hodgson, N.E. Stanford & T.B. Hilditch	269	The role of shear banding on the fatigue ductility of ultrafine-grained aluminium
J.J. Sidor & L.A.I. Kestens	273	Analytical description of rolling textures in face-centred-cubic metals
A.L. Pilchak	277	Fatigue crack growth rates in alpha titanium: Faceted vs. striation growth

(Continued on inside back cover)

INDEXED IN Current Contents, BIOSIS/CAS Selects, Camb. Sci. Abstr., Eng. Ind. Monthly and Author Ind., IBZ, Energy Res. Abstr., Energy Data Base, Metals Abstr., World Alum. Abstr., and the MSCl. Also covered in the abstract and citation database SciVerse Scopus®. Full text available on SciVerse ScienceDirect®



# Scripta MATERIALIA

(Contents continued from outside back cover)

X. Guo, H. Yang, X. Zhu & L. Zhang	281	Preparation and properties of nano-SiC-based ceramic composites containing nano-TiN
D. Lahiri, E. Khaleghi, S.R. Bakshi, W. Li, E.A. Olevsky & A. Agarwal	285	Graphene-induced strengthening in spark plasma sintered tantalum carbide-nanotube composite
O. Sologub, Y. Matsushita & T. Mori	289	An $\alpha$ -rhombohedral boron-related compound with sulfur: Synthesis, structure and thermoelectric properties
R.A.M. Gotardo, F.L. Zabetto, D. Garcia, J.A. Eiras, G.S. Dias, L.F. Cótica, I.A. Santos & A.A. Coelho	293	Dielectric investigations in unconventionally processed TbMnO <sub>3</sub> ceramics
F. Chen, X. Li, J. Wu, Q. Shen, J.M. Schoenung & L. Zhang	297	<i>Effect of post-annealing on the electrical conductivity of spark plasma sintered antimony-doped tin oxide (ATO) ceramics</i>
Y.-Z. Liu, Y.-F. Li, Y.-G. Yang, Y.-F. Wen & M.-Z. Wang	301	A one-pot method for producing ZnO-graphene nanocomposites from graphene oxide for supercapacitors
F. Gheorghiu, L. Curecheriu, A. Ianculescu, M. Calugaru & L. Mitoseriu	305	Tunable dielectric characteristics of Mn-doped BiFeO <sub>3</sub> multiferroic ceramics
D.K. Yang & P.D. Hodgson	309	Tough ultrafine-grained Ti through multilayering and grading
T. Nakano & K. Hagihara	313	Yield stress anomaly controlled by the phase stability in NbSi <sub>2</sub> single crystals
W.-Y. Chen, T.-C. Chiu, K.-L. Lin, A.T. Wu, W.-L. Jang, C.-L. Dong & H.-Y. Lee	317	Anisotropic dissolution behavior of the second phase in SnCu solder alloys under current stress
X.C. Xiong, B. Chen, M.X. Huang, J.F. Wang & L. Wang	321	The effect of morphology on the stability of retained austenite in a quenched and partitioned steel
K. Song, N. Balaji, B. Kim, J. Choi, K. Ryu, C. Park, M. Ju, Y. Lee, Y.-J. Lee, H. Lee, T. Lee & J. Yi	325	Investigation of antimony diffusion for a local back surface field with laser-fired contacts in crystalline silicon solar cells
W.-S. Ko, J.Y. Park, J.-Y. Byun, J.-K. Lee, N.J. Kim & B.-J. Lee	329	Manipulation of surface energy anisotropy in iron using surface segregation of phosphorus: An atomistic simulation
K.-S. Chang, M.L. Green, I. Levin & S. De Gendt	333	Combinatorial screening of work functions in Ta-C-N/HfO <sub>2</sub> /Si advanced gate stacks