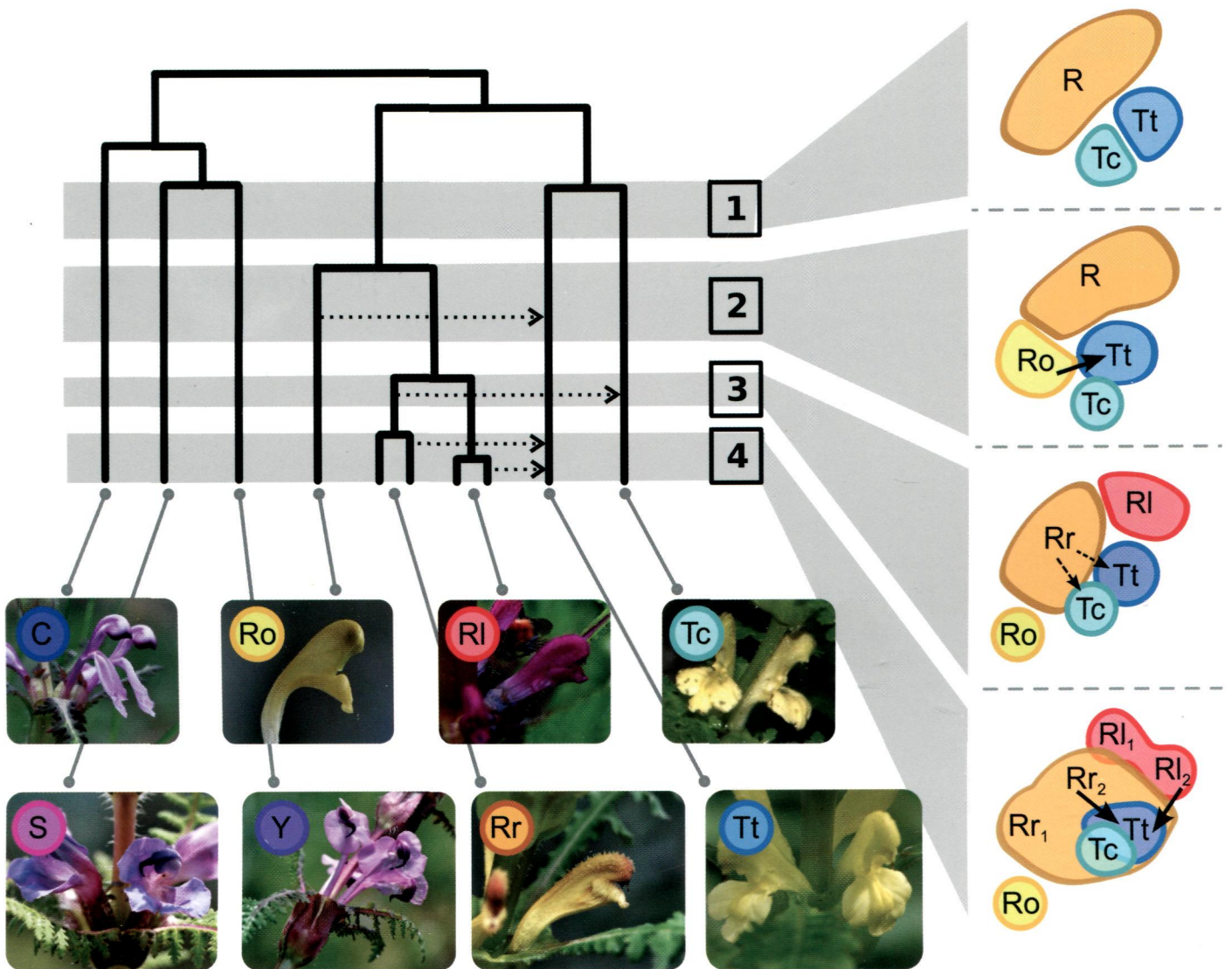


Systematic Biology

A JOURNAL OF THE
Society of Systematic Biologists



VOLUME 62
NUMBER 5

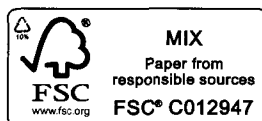
SEPTEMBER 2013

ONLINE ISSN 1076-836X
PRINT ISSN 1063-5157

Systematic Biology

Volume 62, Number 5 September 2013

CONTENTS



Scan to view this journal on your mobile device

REGULAR ARTICLES

- A Semantic Model for Species Description Applied to the Ensign Wasps (Hymenoptera: Evaniidae) of New Caledonia
James P. Ballhoff, István Mikó, Matthew J. Yoder, Patricia L. Mullins, and Andrew R. Deans 639
- Bayesian Tests of Topology Hypotheses with an Example from Diving Beetles
Johannes Bergsten, Anders N. Nilsson, and Fredrik Ronquist 660
- Dating Phylogenies with Sequentially Sampled Tips
Tanja Stadler and Ziheng Yang 674
- Inferring Phylogeny and Introgression using RADseq Data: An Example from Flowering Plants (*Pedicularis*: Orobanchaceae)
Deren A. R. Eaton and Richard H. Ree 689
- Delimiting Species Using Single-Locus Data and the Generalized Mixed Yule Coalescent Approach: A Revised Method and Evaluation on Simulated Data Sets
Tomochika Fujisawa and Timothy G. Barraclough 707
- Identifying Hidden Rate Changes in the Evolution of a Binary Morphological Character: The Evolution of Plant Habit in Campanulid Angiosperms
Jeremy M. Beaulieu, Brian C. O'Meara, and Michael J. Donoghue 725
- Parsimonious Inference of Hybridization in the Presence of Incomplete Lineage Sorting
Yun Yu, R. Matthew Barnett, and Luay Nakhleh 738
- When Outgroups Fail; Phylogenomics of Rooting the Emerging Pathogen, *Coxiella burnetii*
Talima Pearson, Heidie M. Hornstra, Jason W. Sahl, Sarah Schaack, James M. Schupp, Stephen M. Beckstrom-Sternberg, Matthew W. O'Neill, Rachael A. Priestley, Mia D. Champion, James S. Beckstrom-Sternberg, Gilbert J. Kersh, James E. Samuel, Robert F. Massung, and Paul Keim 752
- Addressing Gene Tree Discordance and Non-Stationarity to Resolve a Multi-Locus Phylogeny of the Flatfishes (Teleostei: Pleuronectiformes)
Ricardo Betancur-R., Chenhong Li, Thomas A. Munroe, Jesus A. Ballesteros, and Guillermo Ortí 763

BOOK REVIEW

- Morphology and Evolution of Turtles: Proceedings of the Gaffney Turtle Symposium 2009
Jean-Michel Guillon and Marc Girondot 786

- ERRATUM 787

Cover Illustration: Temporal and geographic reconstructions of lineage divergence and introgression in *Pedicularis* sect. *Cyathophora* based on analyses of genomic restriction-associated DNA (RAD) sequences. Taxon codes are C: *P. cyathophylloides*; Ro: *P. rex* subsp. rockii; Rl: *P. rex* subsp. lipskyana; Rr: *P. rex* subsp. rex; Tc: *P. thamnophila* subsp. cupuliformes; Tt: *P. thamnophila* subsp. thamnophila; Y: *P. cyathophylla*; and S: *P. superba*. The phylogeny shown is based on reconstructions that account for discordant topological signal caused by inferred events of ancestral gene flow (dotted arrows). Four time periods during the diversification of the *rex*-*thamnophila* clade are shown with introgression events (arrows) depicted in the context of hypothetical scenarios of geographic range overlap.