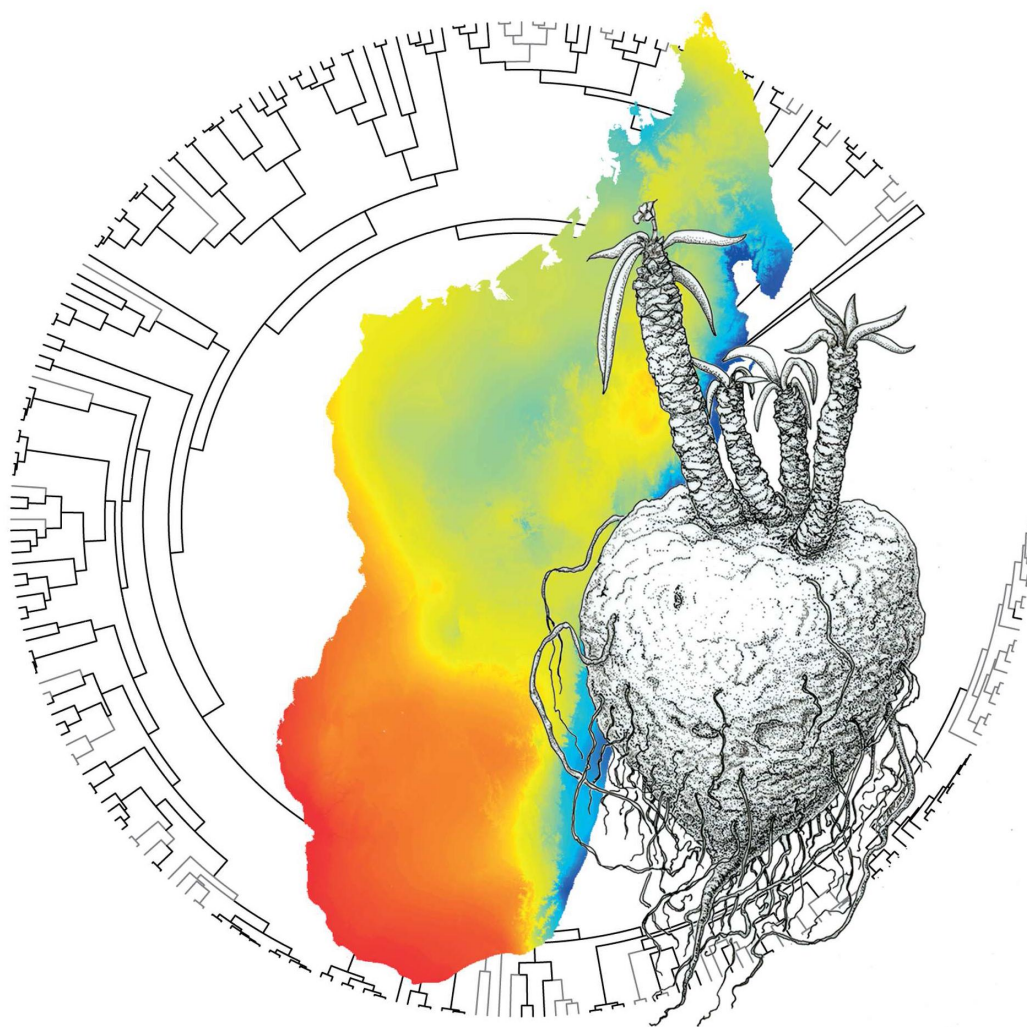


Systematic Biology

A JOURNAL OF THE
Society of Systematic Biologists



VOLUME 63
NUMBER 5

SEPTEMBER 2014

ONLINE ISSN 1076-836X
PRINT ISSN 1063-5157

Systematic Biology

Volume 63, Number 5 September 2014

CONTENTS



Scan to view this journal
on your mobile device

REGULAR ARTICLES

- Disentangling Methodological and Biological Sources of Gene Tree Discordance on *Oryza* (Poaceae) Chromosome 3
Derrick J. Zwickl, Joshua C. Stein, Rod A. Wing, Doreen Ware, and Michael J. Sanderson..... 645
- A Rich Fossil Record Yields Calibrated Phylogeny for Acanthaceae (Lamiales) and Evidence for Marked Biases in Timing and Directionality of Intercontinental Disjunctions
Erin A. Tripp and Lucinda A. McDade..... 660
- A Generalized *K* Statistic for Estimating Phylogenetic Signal from Shape and Other High-Dimensional Multivariate Data
Dean C. Adams..... 685
- Insights on the Evolution of Plant Succulence from a Remarkable Radiation in Madagascar (*Euphorbia*)
Margaret Evans, Xavier Aubriot, David Hearn, Maxime Lanciaux, Sebastien Lavergne, Corinne Cruaud, Porter P. Lowry II, and Thomas Haevermans 698
- A Protocol for Species Delineation of Public DNA Databases, Applied to the Insecta
Douglas Chesters and Chao-Dong Zhu 712
- Mixture Models of Nucleotide Sequence Evolution that Account for Heterogeneity in the Substitution Process Across Sites and Across Lineages
Vivek Jayaswal, Thomas K.F. Wong, John Robinson, Leon Poladian, and Lars S. Jermini..... 726
- Modelling Competition and Dispersal in a Statistical Phylogeographic Framework
Louis Ranjard, David Welch, Marie Paturel, and Stéphane Guindon 743
- Probabilistic Graphical Model Representation in Phylogenetics
Sebastian Höhna, Tracy A. Heath, Bastien Boussau, Michael J. Landis, Fredrik Ronquist, and John P. Huelsenbeck..... 753
- Axiomatic Opportunities and Obstacles for Inferring a Species Tree from Gene Trees
Mike Steel and Joel D. Velasco 772
- Biogeographic Analysis Reveals Ancient Continental Vicariance and Recent Oceanic Dispersal in Amphibians
R. Alexander Pyron..... 779
- Maximum Likelihood Inference of Small Trees in the Presence of Long Branches
Sarah L. Parks and Nick Goldman 798

SOFTWARE FOR SYSTEMATICS AND EVOLUTION

- A Gateway for Phylogenetic Analysis Powered by Grid Computing Featuring GARLI 2.0
Adam L. Bazinet, Derrick J. Zwickl, and Michael P. Cummings..... 812

POINTS OF VIEW

- Why One Century of Phenetics is Enough: Response to "Are There Really Twice As Many Bovid Species As We Thought?"
Fenton P. D. Cotterill, Peter J. Taylor, Spartaco Gippoliti, Jacqueline M. Bishop, and Colin P. Groves 819
- Is Diagnosability an Indicator of Speciation? Response to "Why One Century of Phenetics Is Enough"
Rasmus Heller, Peter Frandsen, Eline Deirdre Lorenzen, and Hans R. Siegismund..... 833
- Testing for Universal Common Ancestry
Leonardo de Oliveira Martins and David Posada..... 838

BOOK REVIEWS

- An Introduction to Population Genetics: Theory and Applications
Julia Sigwart..... 843
- The Nature of Classification: Relationships and Kinds in the Natural Sciences
Alessandro Minelli 844
- The Monkey's Voyage: How Improbable Journeys Shaped the History of Life
David A. Morrison 847

Cover Illustration: Adaptive evolution of succulent growth forms in *Euphorbia* sections Goniostema, Denisophorbia and Deuterocalli (*Euphorbia* GDD) in Madagascar was analyzed using phylogeny, climate, and trait data. Circular phylogeny illustrates the *Euphorbia* GDD radiation, with black branches highlighting the diversity captured in the analysis. The map of Madagascar shows mean annual precipitation (1950-2000, www.worldclim.org), from low to high colored red to blue. The plant illustrated, *Euphorbia cylindrifolia* Marn.-Lap. & Rauh, a dwarf chamaephyte with highly succulent leaves, is found in the sub-arid south of Madagascar. Credits: *Euphorbia primulifolia* var. *primulifolia*: Agathe Haevermans; Map: Thomas Haevermans; Phylogeny: Xavier Aubriot.